



GF Contractor Solutions

From design-assist to delivery, prefab and training —
built for compressed schedules



Excellence
in **Flow⁺**



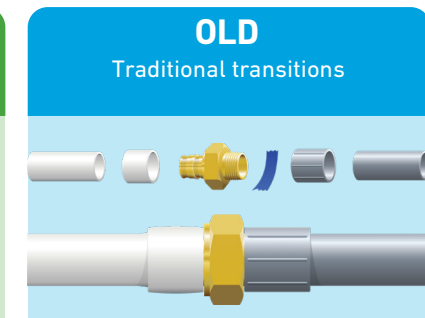
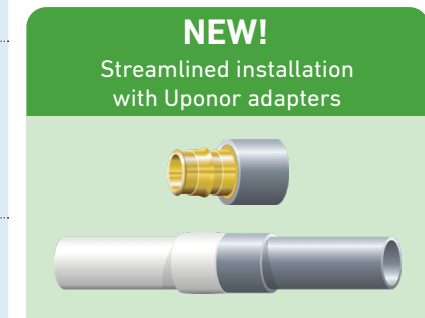
		APPLICATION	TECHNICAL DATA				VALVE OPTIONS														
		Applications*	Size Range	Pressure Rating	Temperature Range	Joining Technology	Standard Ratings	Double Containment Type 546 Pro Manual Ball Valve	Type 530 Aqua Tap Recirculating Faucet with IFD	5 Series Diaphragm Valve	Type 519 Zero-Static Diaphragm Valve	Type 317 Flanged Diaphragm Valve	Type 546 Pro Premium Ball Valve	Type 582 & 586 PRV	Tee Valve	Type 561 & 562 Check Valve	Type 065 Butterfly Valve	Type 567 Butterfly Valve	Type 578 Butterfly Valve	Type 565 Butterfly Valve	
PRESSURE PIPING SYSTEMS	COOL-FIT® PE Plus (Pre-insulated)	<ul style="list-style-type: none"> Chilled Water Glycol Brines Alcohol Solutions Ice-slurry 	32-450mm (1"-18")	Up to 150 psi	-50°C to 60°C -58°F to 140°F	Electrofusion	ASTM D3035 DIN EN ISO 15494	N/A	N/A	20-63mm (½"-2")	N/A	75-110mm (2½"-4")	32-110mm (¾"-4")	N/A	N/A	20-110mm (½"-4")	N/A	2"-12"	2"-12"	N/A	
	COOL-FIT® PE (Non-insulated)	<ul style="list-style-type: none"> Chilled Water Glycol Brines Alcohol Solutions Ice-slurry 	32-450mm (1"-18")	Up to 150 psi	-50°C to 60°C -58°F to 140°F	Electrofusion	ASTM D3035 DIN EN ISO 15494	N/A	N/A	20-63mm (½"-2")	N/A	75-110mm (2½"-4")	20-110mm (¾"-4")	N/A	N/A	20-110mm (½"-4")	N/A	2"-12"	2"-12"	2"-12"	
	ecoFIT® HDPE (metric) Design Flow HDPE (IPS & DIPS)	<ul style="list-style-type: none"> Chilled Water Process Cooling Water Industrial Water Treatment Bulk Water Distribution 	16-500mm ecoFIT 2"-36" Design Flow	Up to 200 psi	-50°C to 60°C -58°F to 140°F	IR Plus® Fusion Butt Fusion Electrofusion	ASTM D3035 FDA CFR 21.177.160 NSF 61	N/A	N/A	20-63mm (½"-2")	N/A	75-160mm (2½"-6")	20-110mm (½"-4")	N/A	N/A	20-110mm (½"-4")	N/A	2"-24"	2"-12"	2"-12"	
	PROGEF® Standard PP	<ul style="list-style-type: none"> Lab Grade RODI Water Chemical Delivery Reverse Osmosis 	16-500mm (¾"-20")	Up to 150 psi	0°C to 80°C 32°F to 176°F	IR Plus® Fusion Butt Fusion Socket Fusion	FDA CFR 21.177.1520 USP 25 Class VI NSF 61	N/A	25-75mm (¾"-2½"); 1½"-2½" sanitary	20-63mm (½"-2")	20-63mm (½"-2")	75-160mm (2½"-6")	16-110mm (¾"-4")	20-63mm (½"-2")	63-160mm (2"-6")	16-110mm (¾"-4")	N/A	2"-24"	2"-12"	2"-12"	
	PROGEF® Plus	<ul style="list-style-type: none"> Lab Grade RODI Water Process Cooling Water Reverse Osmosis 	20-315mm (½"-12")	Up to 150 psi	0°C to 80°C 32°F to 176°F	IR Plus® Fusion Butt Fusion Socket Fusion	FDA CFR 21.177.1520 USP 25 Class VI NSF 61	N/A	25-75mm (¾"-2½"); 1½"-2½" sanitary	20-63mm (½"-2")	20-63mm (½"-2")	N/A	16-110mm (¾"-4")	N/A	63-160mm (2"-6")	16-110mm (¾"-4")	N/A	2"-12"	2"-12"	2"-12"	
	PROGEF® Natural PP	<ul style="list-style-type: none"> Lab Grade RODI Water Pharmaceutical Grade Water 	20-90mm (½"-3")	Up to 150 psi	0°C to 80°C 32°F to 176°F	BCF® Plus Fusion IR Plus® Fusion	FDA CFR 21.177.1520 USP 25 Class VI	N/A	25-75mm (¾"-2½"); 1½"-2½" sanitary	20-63mm (½"-2")	20-63mm (½"-2")	N/A	20-90mm (½"-3")	N/A	N/A	N/A	N/A	N/A	N/A	N/A	2"-12"
	SYGEF® Standard PVDF	<ul style="list-style-type: none"> Pharmaceutical Grade DI Water Acid Distribution 	20-315mm (½"-12")	Up to 232 psi	-20°C to 140°C -4°F to 284°F	BCF® Plus Fusion IR Plus® Fusion Butt Fusion Socket Fusion	ASME BPE FDA CFR 21.177.2510 USP 25 Class VI FM4910, UL723, ASTM E84	N/A	25-75mm (¾"-2½"); 1½"-2½" sanitary	20-63mm (½"-2")	N/A	75-160mm (2½"-6")	16-110mm (¾"-4")	20-63mm (½"-2")	N/A	20-110mm (½"-4")	N/A	2"-12"	2"-12"	2"-12"	
	SYGEF® Plus HP PVDF	<ul style="list-style-type: none"> Semiconductor UPW/HUPW USP Pharmaceutical Water for Injection (WFI) High Purity Acid Distribution 	20-450mm (½"-18")	Up to 232 psi	-20°C to 140°C -4°F to 284°F	BCF® Plus Fusion IR Plus® Fusion Butt Fusion	ASME BPE FDA CFR 21.177.2510 USP 25 Class VI SEMI F57 FM4910	N/A	N/A	20-63mm (½"-2")	20-160mm (1½"-6")	75-160mm (2½"-6")	N/A	20-63mm (½"-2") Type 582 only	N/A	N/A	2"-14"	N/A	N/A	N/A	2"-12"
SYGEF® ECTFE	<ul style="list-style-type: none"> Acid Distribution Chemical Transport and Storage Chemical Waste 	20-110mm (½"-4")	Up to 150 psi	-20°C to 80°C -4°F to 176°F	IR Plus® Fusion	NSF/ANSI Standard 61 FM4910	N/A	N/A	N/A	N/A	N/A	N/A	N/A	N/A	N/A	N/A	N/A	N/A	N/A	N/A	
WASTE	Fuseal® PP / Fast-Lock Corrosive Waste	<ul style="list-style-type: none"> Corrosive Waste Drainage Laboratory Waste Drainage Food Processing Waste Drainage 	1½"-16"	**Up to 50 psi	0°C to 100°C 32°F to 212°F	Electrofusion Mechanical Joint	ASTM F1412 ASTM D3311 ASTM D4101 NSF-cw	N/A													
	Fuseal 25/50™ PVDF Corrosive Waste	<ul style="list-style-type: none"> Corrosive Waste Drainage for Return Air Plenums Corrosive Waste Drainage at Elevated Temperatures 	1½"-6"	**Up to 50 psi	-20°C to 140°C -4°F to 284°F	Electrofusion	ASTM F1673 ASTM D3311 ASTM E84 UL 723	N/A													
	Fuseal Squared™ PP Double Containment Corrosive Waste	<ul style="list-style-type: none"> Double Contained Corrosive Waste Drainage 	1½"×4" - 8"×12"	**Up to 50 psi	0°C to 100°C 32°F to 212°F	Electrofusion	ASTM F1412 ASTM D3311 ASTM D4101 IGC 164-2001	N/A													
CONTAINMENT	Contain-It™ Clear PVC Secondary Containment	<ul style="list-style-type: none"> Chemical Process Line Containment Corrosive Chemical Waste Containment Petroleum Chemical Containment 	3"-6"	Up to 32 psi	0°C to 60°C 32°F to 140°F	Adhesive Joint	ASTM D784 ASTM D3034 UL94 40CFR80	N/A													
	Double-See™ PVC and CPVC Double Containment	<ul style="list-style-type: none"> Water and Waste Water Treatment Chemical Delivery Dosing and Processing 	½"×2" - 8"×12"	Varies by size (primary) Up to 50 psi (secondary)	Varies by Pipe	Solvent Cement	NSF/ANSI 14 & 61 ASTM D1784 ASTM D1785 ASTM D2467	½"×2" - 2"×4"													

Excellence
in Flow⁺

Application		Technical Data					Valve Options															
		Size Range	Pressure Rating	Temperature Range	Joining Technology	Standard Ratings	Double Containment Type 546 Pro Manual Ball Valve	Type 530 AquaTap Recirculating Faucet with IFD	5 Series Diaphragm Valve	Type 519 Zero-Static Diaphragm Valve	Type 317 Flanged Diaphragm Valve	Type 546 Pro Ball Valve	Type 582 & 586 PRV	Tee Valve	Type 561 & 562 Check Valve	Type 065 Butterfly Valve	Type 567 Butterfly Valve	Type 578 Butterfly Valve	Type 375 Manual Ball Valve	Type 543 Manual Ball Valve	Type 565 Wafer/Lug Butterfly Valve	
VINYL PIPING SYSTEMS	ChlorFIT® CPVC	• Elevated Temperature Systems • Hot and Cold Potable Water Systems • Water and Wastewater Treatment • Hot Corrosive Fluid Transfer • Chemical Processing	¼" - 24"	Varies by size and Schedule - Up to 780 psi	32°F to 200°F (0C to 93°C)	Solvent Cement Threaded Flanged	ASTM D1784 ASTM F441 ASTM F439 NSF 61	N/A	N/A	½" - 2"	N/A	2-½" - 4"	¾" - 4"	1/2" - 2"	3/4" - 8"	¾" - 4"	N/A	2" - 12"	2" - 12"	½" - 4"	¾" - 2"	2" - 12"
	Industrial PLUS PVC	• Chemical Delivery • Potable Water Systems • Irrigation • Water Collection • Agriculture	½" - 24"	Varies by size and Schedule - Up to 780 psi	32°F to 140°F (0C to 60°C)	Solvent Cement Threaded Flanged	ASTM D1784 ASTM D1785 ASTM D2467 NSF 61	N/A	N/A	½" - 2"	N/A	2-½" - 6"	¾" - 4"	1/2" - 2"	3/4" - 8"	¾" - 4"	N/A	2" - 12"	2" - 12"	½" - 4"	¾" - 2"	2" - 12"
	Clear PVC	• Sight Glass • Dual Containment • Food Processing • Visual Monitoring Systems	¼" - 12"	Varies by size and Schedule - Up to 570 psi	32°F to 140°F (0C to 60°C)	Solvent Cement Threaded Flanged	ASTM D1784 FDA Title 21 NSF 61	N/A	N/A	½" - 2"	N/A	2-½" - 6"	¾" - 4"	1/2" - 2"	3/4" - 8"	¾" - 4"	N/A	2" - 12"	2" - 12"	½" - 4"	¾" - 2"	2" - 12"

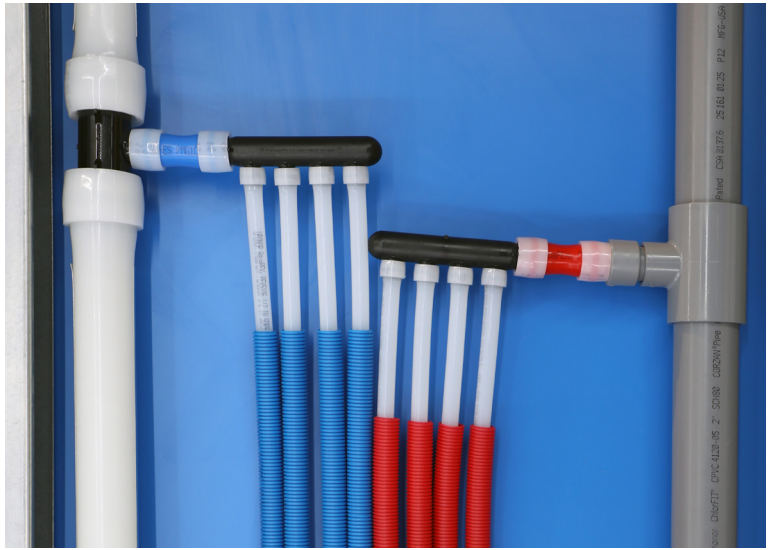
UPONOR PEX-A	Uponor AquaPEX®	• Hot and Cold Domestic Potable Water Distribution (Plumbing) • Residential Fire Safety • Reclaimed Water (Graywater)	¼" - 3"	160 psi at 73°F 80 psi at 140°F	32°F to 140°F (0C to 60°C)	Cold Expansion	ASTM F877 ASTM F876 NSF61 NSF14 ASTM E84 ASTM 2023 NFPA-13D ASTM F1960 ASTM F1807 ASTM F2098
	Wirsbo hePEX™	• Radiant Heating and Cooling • Permafrost Protection (Cold Storage) • Turf Conditioning • Chilled Water Distribution • Heating Hot Water Distribution • Prefabricated as Radiant Rollout™ Mats	5/16" - 3"	160 psi at 73°F 100 psi at 180°F 80 psi at 200°F	32°F to 200°F (0C to 93°C)	Cold Expansion	ASTM F1960 ASTM F876/F877 ASTM F2023 ASTM E84 ASTM E119/ULC 263 ASTM E814/ULC S115 ASTM F1960 ASTM F1807 ASTM F2098 ASTM F2080
	Uponor ProPEX® Fittings and Valves	• Hot and Cold Domestic Potable Water Distribution (Plumbing) • Residential Fire Safety • Radiant Heating and Cooling • Hydronics • Reclaimed Water (Graywater)	¼" - 3"	160 psi at 73°F 80 psi at 200°F *140°F for DHW Valves: 250 psi CWP*	32°F to 200°F* (0C to 93°C) *140F (60°C) for DHW	Cold Expansion	ASTM E119/ULC 263 ASTM F1960 ASTM E84 ASTM E814/ULC S115 CSA B137.5 ASTM F877/ULC S102.2 ULC S101 NSF/ANSI/CAN 372 NSF/ANSI 359

ProPEX® LF Brass Schedule 80 Corzan® CPVC Adapters



A first in the industry, transitioning from Schedule 80 CPVC to ProPEX® has never been easier with these new spigot and socket adapters in sizes from ½" - 3".
Corzan® is a registered trademark of Lubrizol Advanced Materials, Inc.

*Please reference the GF Chemical Resistance Guide at www.gfps.com **Standard test pressure up to 15 psi. Pressure waste discharge of up to 50 psi may be allowable. Mechanical joint discharge of up to 35 psi may be allowable. **Offsite prefabrication and engineering services are also available.**



Services That Help Contractors Build Faster

Our integrated approach helps contractors streamline every stage—design, estimating, training, and logistics—so you can build smarter, faster, and safer.



Design Assist + Engineering Support

We provide engineering design assist—including sizing and stress analysis along with fast updates to layouts, quotes, and revisions. Full-system modeling including BIM and CAD digital libraries, integration of third-party equipment and interfaces to eliminate clashes and surprises.



Estimation Support

Our Estimation Support service streamlines planning and procurement with detailed takeoffs and accurate bills of materials. We help contractors forecast costs, align budgets early, and secure the right materials at the right time.



Custom Specification Writing

Our team can help develop project specifications that meet performance, sustainability objectives, and regulatory requirements.



Measurement and Valve Automation Solutions

GF Valve Automation Centers deliver tailored actuated valve solutions, including customization of GF actuators integrated with 3rd party metal valves, and GF valves integrated with 3rd party actuators. Complementing these capabilities, GF also offers an extensive sensor and instrumentation portfolio for the water treatment and chemical process industries.



Kitting Services

Upon Kitting Services helps improve jobsite productivity by organizing materials for faster, more consistent installation, reducing labor inefficiencies, and supporting schedule control.



Prefabrication Assembly + Modules

Offsite construction can help reduce labor inefficiencies and field rework. GF supports contractors with design coordination, prefabricated assemblies, and on-time delivery. Solutions such as Uponor Prefabricated PEX Water Risers and Uponor Radiant Rollout™ Mats can help accelerate installation and keep projects on schedule and within budget.



Construction Services

With a robust menu of service offerings and a wide range of experts in Uponor product, design and engineering, project management, and CAD applications, the Uponor Construction Services team is ready to provide assistance through each stage of the construction cycle.



Training + Support— Built for the Field

Our certification programs, with hands-on training, equip your teams with the skills to design, install, and maintain plastic piping systems confidently—reducing errors, optimizing installation time, boosting safety, and ensuring long-term success.

Your installers, supervisors and inspectors can be trained and certified in different jointing technologies of plastic piping systems, such as:

- Mechanical Jointing
- Solvent Cementing
- Socket Fusion
- Electrofusion
- Butt Fusion
- IR Fusion
- BCF Fusion

Fusion Machine Solutions You Can Trust

For more than 30 years, the installer's demand for efficient and dependable fusion equipment has fueled GF's commitment to developing, manufacturing, and supporting high-performance fusion machines. Every year, hundreds of units are evaluated, serviced, and calibrated by our expert technicians—ensuring your fusion equipment performs at its best when it matters most.

GF offers the Weld Bead Inspection (WBI) tool and training to help installers and QA/QC teams elevate weld quality and protect overall system integrity. Developed by GF as a reliable, non-destructive inspection method, WBI delivers the knowledge and hands-on skills needed to identify weld issues early, reduce rejection rates, and verify weld quality with confidence.

Buy or Rent

GF delivers documented, professional training across every GF fusion machine—empowering crews to produce consistent, high-quality welds. And with thousands of IR and electrofusion machines equipping rental fleets, GF provides unmatched availability, reliability, and scale—keeping your projects on schedule and your operations running strong.



Connect with your local GF Contractor Solutions team today.
[GF Contractor Solutions](#)

Contractor-First Support Model: Single Point of Contact

One call for answers. Faster adoption of new systems.

- A single point of contact to route technical, estimating, and logistics needs quickly
- Dedicated project support for large/complex projects (coordination, delivery schedules, technical support)



Excellence in Flow

Visit our webpage to get in touch with your local specialist:
www.gfps.com/our-locations



The information and technical data (altogether "Data") herein are not binding, unless explicitly confirmed in writing. The Data neither constitutes any expressed, implied or warranted characteristics, nor guaranteed properties or a guaranteed durability. All Data is subject to modification. The General Terms and Conditions of Sale of Georg Fischer Piping Systems apply.

