

GF Piping Systems

+GF+

Fewer Parts, Higher Performance

LOKX System™ Ductile Iron Fitting



Fewer Parts, Higher Performance

Solutions to everyday water
and waterworks issues.

About

The LOKX System™ is a proprietary ductile iron push-on style fitting with an internal self-restraining gasket that prevents pipe-to-pipe and pipe-to-fitting separation even at high pressures. Highly engineered, LOKX is fast and easy to install, capable up to a total of 10 degrees of deflection in any direction (5 degrees per bell), and designed to be compatible with any PVC pipe.



Features & Benefits

- Reduce installation and labor cost up to 80%
- Corrosion resistant fusion bonded epoxy coating
- Fewer components to inventory & assemble than traditional MJ systems results in a system that is up to 40% lighter
- Available in numerous sizes and configurations
- Can be used on any DR C900, C909, PVC 4" through 12" pipe
- Provide maintenance free peace of mind for up to 50 years
- Patent No.: US 11, 112, 038 B2

Applications

- Forced water & sewer
- Wastewater
- Cities and municipalities
- High corrosion areas
- Coastal areas with brackish soils
- Seismic areas or areas with high ground movement





Configuration made easy

Full range of fittings.

BENDS



11.25 Degree Bend



22.50 Degree Bend



45 Degree Bend



90 Degree Bend

CONNECTORS



Cap



Coupling



Flange Adapter



Reducer

WYES



TEES



These are just examples of fittings, please contact us for a full list.

LOKX

Ductile Iron Fitting System™

Fewer Parts.
Higher Performance



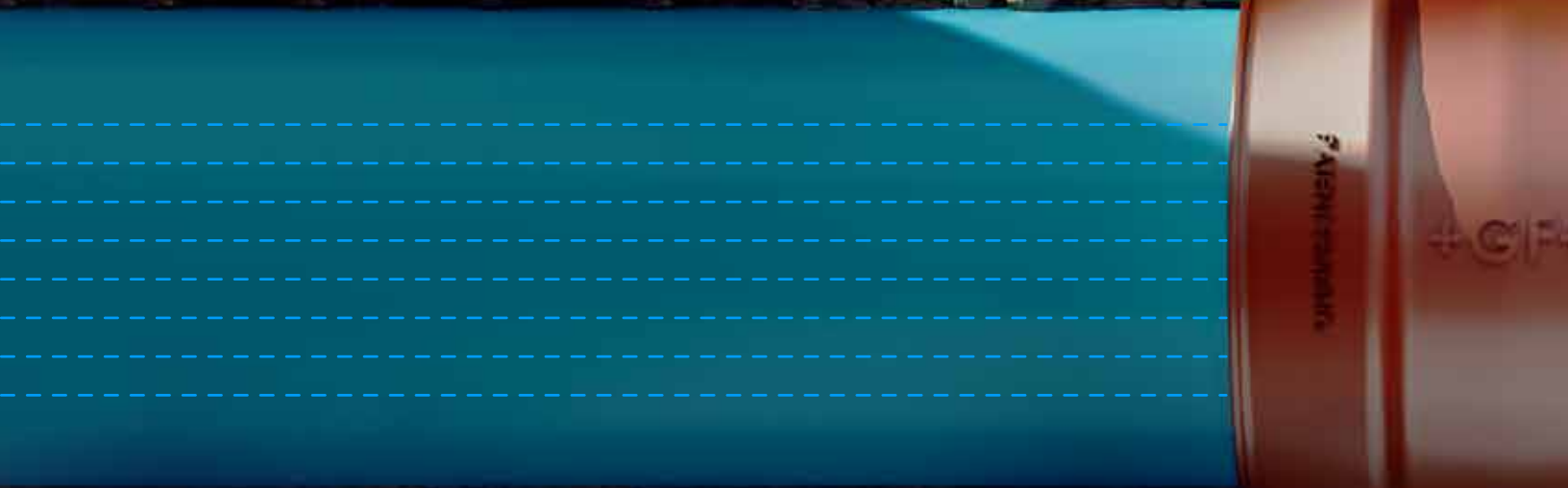
Proprietary ductile iron push-on style fitting with an internal self-restraining gasket that prevents pipe-to-pipe and pipe-to-fitting separation at high pressures.



Each bell of the LOKX fitting is capable of 5° degrees deflection, even under pressure.



The elimination of all bolts in the LOKX system is not only leak-resistant but fast and easy to install.



+GF+



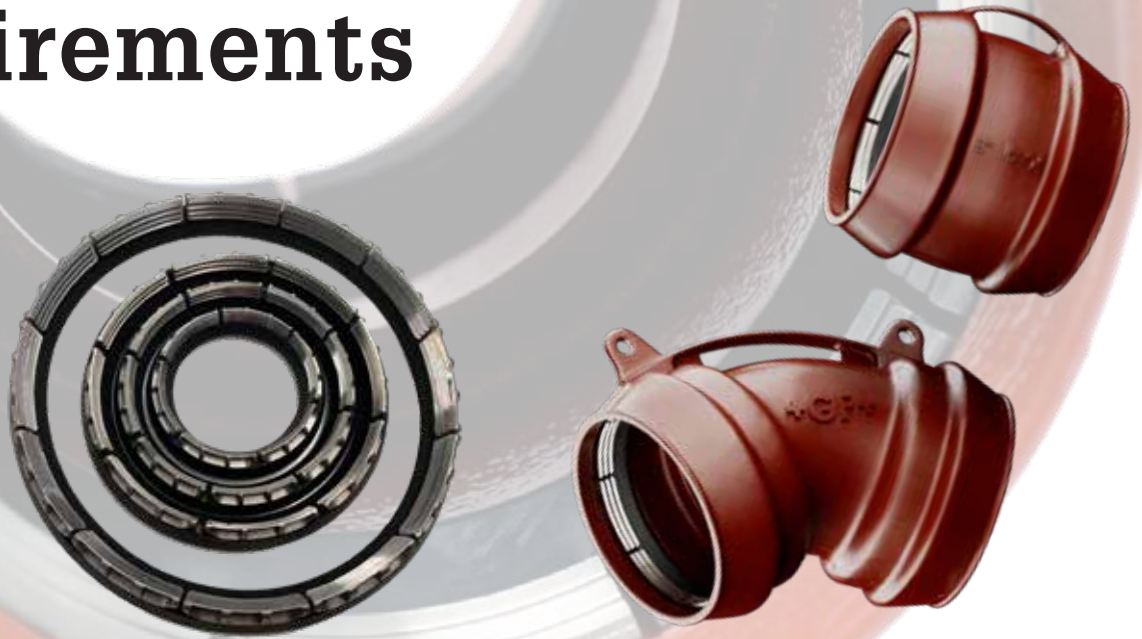
Fewer components to inventory & assemble than traditional MJ systems, resulting in a system that is up to 40% lighter, as well as reduces installation and labor costs by up to 80%



Designed to be compatible with any PVC pipe

Its and wedges means
only corrosion and
and easy to install.

Meets or Exceeds Applicable Standards Requirements



Meets or exceeds applicable requirements of the Standards listed below

ANSI/AWWA C153/A21.53	American National Standard for Ductile Iron Compact Fittings
ANSI/AWWA C110/A21.10	Ductile and Grey Iron Fittings for Water
ANSI/AWWA C111/A21.11	American National Standard for Rubber Gasketed Joints for Ductile Iron Pressure Pipe and Fittings
ANSI/AWWA C116/A21.16	American National Standard for Protective Fusion Bonded Epoxy Coating for the Interior and Exterior Surfaces of Ductile Iron and Grey Iron Fittings for Water Supply Service
ASTM F1674	Standard Test Method for Joint Restraint Products for use with PVC Pipe
ASTM D3139	Standard Specification for Joints for Plastic Pressure Pipes Using Flexible Elastomeric Seals
ASTM F477	Standard Specification for Elastomeric Seals (Gaskets) for Joining Plastic Pipe
NSF/ANSI 61	Drinking Water System Components-Health Effects
Pending	Underwriters Laboratories Listed
Pending	Factory Mutual Approved

LOKX System™ Ingenious Joining Method outlasts Traditional systems.



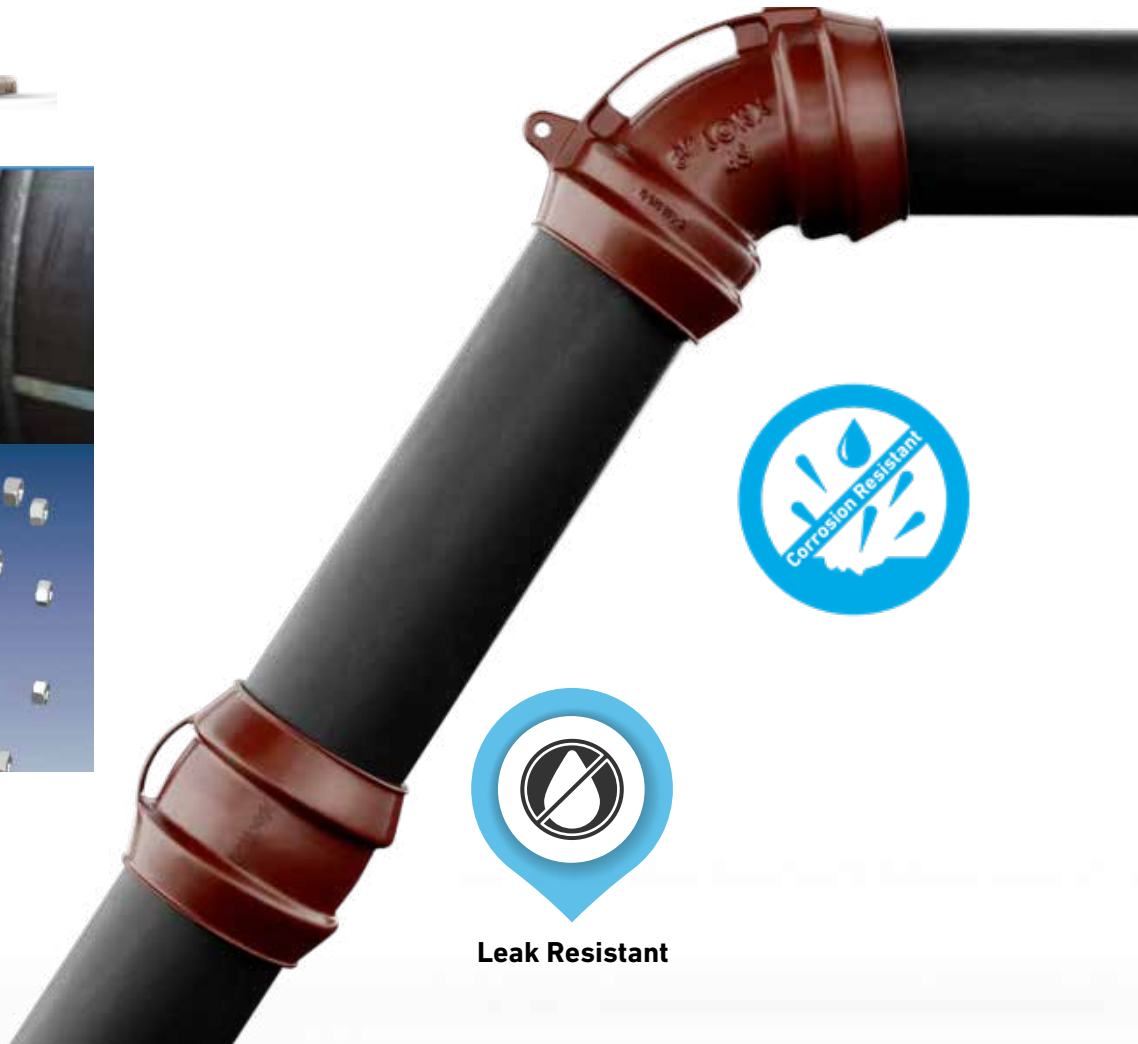
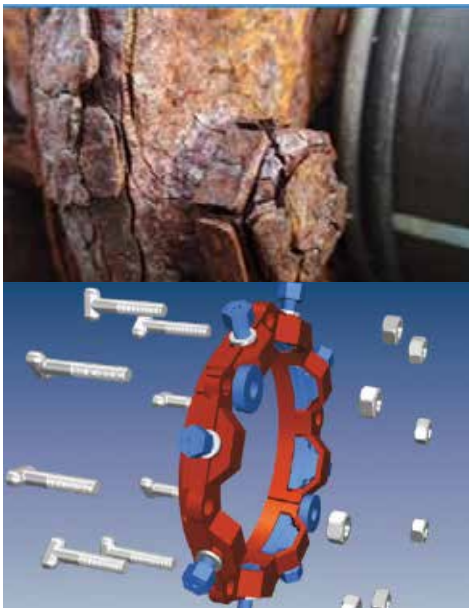
Traditional MJ Systems Problems

- Time & labor intensive to install
- Failures due to installation errors
- Numerous steel bolts prone to corrosion
- Heavy to move, difficult to warehouse
- Point loading and pipe distortion with exterior restraints



LOKX System™ Solution

- LOKX System saves up to 80% in installation time with the elimination of all bolts and assembly tools
- LOKX fittings are coated with fusion-bonded epoxy inside and out for superior corrosion resistance (NSF)
- LOKX System has a full 5° deflection per bell after installation (10° total), and can be installed in seismic applications
- Low insertion force lip-seal design gasket with 316 stainless steel gripping segments that are self-engaging
- When fully engaged, the gripping segments form a 360° restraint preventing pipe distortion and point loading
- Ideal solution for pipe-to-pipe-to-fitting applications



Leak Resistant

Local support around the world

Visit our webpage to get in touch with your local specialist:

www.gfps.com/our-locations



GF Piping Systems

Tel. (714) 731-8800, Toll Free (800) 854-4090

Fax (800) 426-7188

us.ps@georgfischer.com

www.gfps.com

For the most up-to-date technical information, please refer to our website at www.gfps.com

The information and technical data (altogether "Data") herein are not binding, unless explicitly confirmed in writing. The Data neither constitutes any expressed, implied or warranted characteristics, nor guaranteed properties or a guaranteed durability. All Data is subject to modification. The General Terms and Conditions of Sale of Georg Fischer Piping Systems apply.