

GF Piping Systems

+GF+

ELGEF Plus – Big Dimensions

Sinkhole swallows parked cars in the city

Publiacqua S.p.A. Florence, Italy

Emergency repair with MULTI/JOINT® 3000 Plus system and rapid installation of a bypass with ELGEF Plus couplers and GF Piping Systems flanges.

ELGEF Plus – water supply burst restored in just 24h



The value of high quality products and outstanding services are especially noticeable in emergency situations. A massive sinkhole caused by a leaking DN600 ductile cast iron pipe swallowed thirty parked cars in downtown Florence. In addition to the disastrous damages, the water company had to immediately restore the water supply for thousands of residents. The challenging task – installing a bypass – could be quickly solved with GF Piping Systems products.

Project background

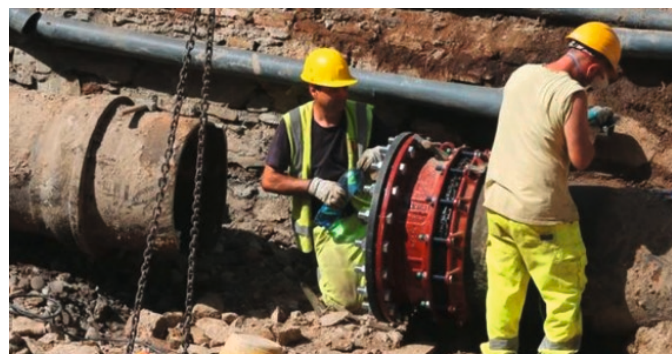
In May 2016, a large part of the embankment in downtown Florence near Ponte Vecchio collapsed all of a sudden and crashed down a few meters. A leaking DN600 cast iron main water pipe had washed away a massive amount of soil, causing a giant sinkhole with a swirling water mass, which swallowed parked cars and caused great chaos. Publiacqua S.p.A., the waterworks of Florence, had to find a solution to restore the water supply of a major part of Florence's residents as quickly as possible. All parties involved in the repair of the temporary transport line bypass had to act quickly, reliably, and efficiently.

Selected technical solution

Publiacqua S.p.A., in general applies the principle that new suppliers must go through a tough quality control process before they can actually supply any products. Fortunately, the urgently needed GF Piping Systems components for the repair and bypass line had already been approved by the water works. Moreover, the excellent stock level of the local wholesaler near Florence and GF Piping Systems distribution center in Italy, provided very fast on site delivery of the required MULTI/JOINT® 3000 Plus system, d500 mm ELGEF Plus couplers, flange adaptors and flanges. In such emergency repair situations in particular, not only the availability of the products but also the ease of installation of the large diameter ELGEF Plus Couplers d500 mm and the fit of all the different GF Piping Systems components were highly appreciated.

Accomplished improvement

The excellent communications, extensive stock levels, and fast response times between the water works and GF Piping Systems Italy, resulted in rapid delivery and installation. Within only 24 hours of the sinkhole crash, the temporary bypass of the water line was installed and restored, securing the water supply of thousands of residents and tourists. Publiacqua S.p.A. put its trust in GF Piping Systems products and highly appreciated the effort and support of GF Piping Systems Italy. They will not hesitate to use GF Piping Systems products again in the future.



Trouble-free repair of all pipes: MULTI/JOINT® 3000 Plus.



Perfect and easy fit for PE repairs:
ELGEF Plus coupler and GF Piping Systems flange d500 mm.

Customer benefits

- Excellent and fast communication between the local dealer and water utility company.
- Extensive stock levels and immediate delivery of all urgent repair components.
- Perfect fit of all GF Piping Systems components: ELGEF Plus electro-fusion couplers, flange adaptors, flanges, MULTI/JOINT® 3000 Plus system.
- Easy and fast installation restored the water supply within 24 hours.

Your contact

GF Piping Systems Ltd
Ebnetstrasse 111
8201 Schaffhausen / Switzerland

Telephone +41 (0)52 631 11 11
mail@georgfischer.com
www.gfps.com

The information and technical data (altogether "Data") herein are not binding, unless explicitly confirmed in writing. The Data constitutes neither any expressed, implied or warranted characteristics, nor guaranteed properties, or guaranteed durability. All Data is subject to modification. The General Terms and Conditions of Sale of Georg Fischer Piping Systems apply. © Georg Fischer AG, all information contained for the sole benefit and use of Georg Fischer Companies.

