

Product range

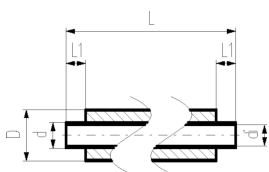
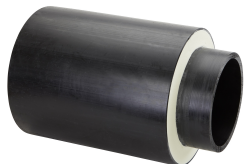
COOL-FIT 4.0



Table of contents

COOL-FIT 4.0 Pipes and Fittings	4
COOL-FIT 4.0 Transition Fittings	19
COOL-FIT 4.0 Weld-in Port	37
COOL-FIT 4.0 Flexible Hoses	39
COOL-FIT 4.0 Valves	40
COOL-FIT 4.0 Accessories	48
COOL-FIT 4.0 Heat Tracing	59
COOL-FIT 4.0 Tools	61
COOL-FIT 4.0 Spare Parts	65
COOL-FIT 4.0 Push System Pipes and Fittings	71
COOL-FIT 4.0 Push System Valves	73
COOL-FIT 4.0 Push System Accessories	75
COOL-FIT 4.0 Push System Tools	78

COOL-FIT 4.0 Pipes and Fittings



COOL-FIT 4.0 Pipe d32-d450

Model:

- Pre-insulated PE100 SDR11/17 metric
- Insulation made from GF HE foam
- Impact resistant. Color: black
- Length: 5m for d32-d225, 5.9m for d250-d450
- With free ends for electrofusion

d (mm)	D (mm)	DN (mm)	SDR	PN (bar)	Code	Weight (kg/m)	closest inch (inch)	di (mm)	L (mm)	L1 (mm)
32	90	25	11	16	738 173 108	1.411	1	26.2	5000	36
40	110	32	11	16	738 173 109	2.054	1 ¼	32.6	5000	40
50	110	40	11	16	738 173 110	2.221	1 ½	40.8	5000	44
63	125	50	11	16	738 173 111	2.987	2	51.4	5000	48
75	140	65	11	16	738 173 112	3.757	2 ½	61.4	5000	55
90	160	80	11	16	738 173 113	4.819	3	73.6	5000	62
110	180	100	11	16	738 173 114	6.200	4	90.0	5000	72
140	225	125	11	16	738 173 116	9.676	5	114.6	5000	84
160	250	150	17	10	738 173 117	9.921	6	141.0	5000	90
225	315	200	17	10	738 173 120	16.620	8	198.2	5000	110
250	355	250	17	10	738 173 021	18.180	10	220.4	5900	123
280	400	250	17	10	738 173 022	22.640	10	246.8	5900	126
315	450	300	17	10	738 173 023	28.510	12	277.6	5900	133
355	500	350	17	10	738 173 024	35.350	14	312.8	5900	148
400	560	400	17	10	738 173 125	44.070	16	352.6	5900	150
450	630	450	17	10	738 173 126	55.490	18	396.6	5900	165

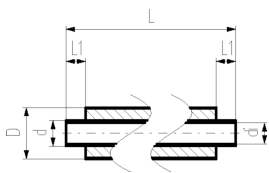
COOL-FIT 4.0 Pipe d160-d450 SDR17 11.9m length

Model:

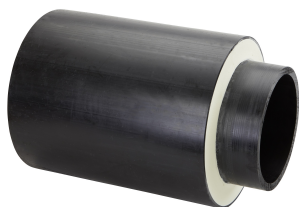
- Pre-insulated PE100 SDR 17 metric
- Insulation made from GF HE foam
- Outer jacket impact resistant. Color: black
- Length: 11.9m
- With free ends for electrofusion

Note:

Consider transport and handling possibilities
Make to order



d (mm)	D (mm)	DN (mm)	SDR	PN (bar)	Code	Weight (kg/m)	closest inch (inch)	di (mm)	L (mm)	L1 (mm)
160	250	150	17	10	738 173 187	9.921	6	141.0	11900	90
225	315	200	17	10	738 173 190	16.620	8	198.2	11900	110
250	355	250	17	10	738 173 191	18.180	10	220.4	11900	123
280	400	250	17	10	738 173 192	22.640	10	246.8	11900	126
315	450	300	17	10	738 173 193	28.510	12	277.6	11900	133
355	500	350	17	10	738 173 194	35.350	14	312.8	11900	148
400	560	400	17	10	738 173 195	44.070	16	352.6	11900	150
450	630	450	17	10	738 173 196	55.490	18	396.6	11900	165



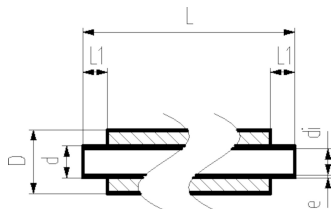
COOL-FIT 4.0 Pipe d160-d450 SDR11

Model:

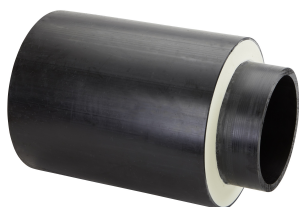
- Pre-insulated PE100 SDR11 metric
- Insulation made from GF HE foam
- Outer jacket impact resistant. Color: black
- Length: 5m for d160+d225, 5.9m for d250-d450
- With free ends for electrofusion

Note:

Make to order



d (mm)	D (mm)	DN (mm)	SDR	PN (bar)	Code	Weight (kg/m)	closest inch (inch)	di (mm)	L (mm)	L1 (mm)
160	250	150	11	16	738 173 267	12.213	6	130.8	5000	90
225	315	200	11	16	738 173 270	21.169	8	184.0	5000	110
250	355	250	11	16	738 173 271	24.681	10	204.6	5900	123
280	400	250	11	16	738 173 272	31.731	10	229.2	5900	126
315	450	300	11	16	738 173 273	39.333	12	257.8	5900	133
355	500	350	11	16	738 173 274	49.614	14	290.6	5900	148
400	560	400	11	16	738 173 275	62.811	16	327.4	5900	150
450	630	450	11	16	738 173 276	76.431	18	368.2	5900	165



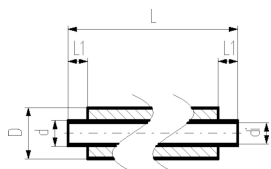
COOL-FIT 4.0 Pipe d160-d450 SDR11 11.9m length

Model:

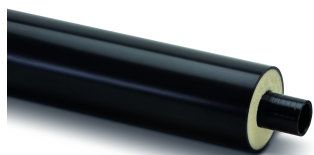
- Pre-insulated PE100 SDR11 metric
- Insulation made from GF HE foam
- Outer jacket impact resistant. Color: black
- Length: 11.9m
- With free ends for electrofusion

Note:

Consider transport and handling possibilities
Make to order



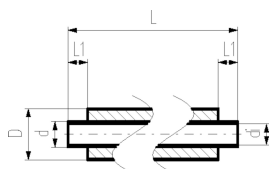
d (mm)	D (mm)	DN (mm)	SDR	PN (bar)	Code	Weight (kg/m)	closest inch (inch)	di (mm)	L (mm)	L1 (mm)
160	250	150	11	16	738 173 287	12.213	6	130.8	11900	90
225	315	200	11	16	738 173 290	21.169	8	184.0	11900	110
250	355	250	11	16	738 173 291	24.681	10	204.6	11900	123
280	400	250	11	16	738 173 292	31.731	10	229.2	11900	126
315	450	300	11	16	738 173 293	39.333	12	257.8	11900	133
355	500	350	11	16	738 173 294	49.614	14	290.6	11900	148
400	560	400	11	16	738 173 295	62.811	16	327.4	11900	150
450	630	450	11	16	738 173 296	76.431	18	368.2	11900	165



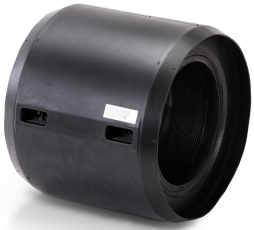
COOL-FIT 4.0F Pipe Fire retardant

Model:

- Pre-insulated PE100 SDR 17 metric
- Insulation made from GF HE foam
- Fire retardant jacket. Color: black
- With free ends for electrofusion



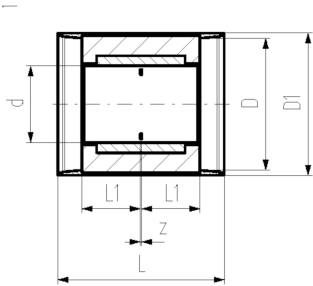
d (mm)	D (mm)	DN (mm)	SDR	PN (bar)	Code	Weight (kg/m)	closest inch (inch)	di (mm)	L (mm)	L1 (mm)
160	250	150	17	10	738 173 317	9.921	6	141.0	5000	90
225	315	200	17	10	738 173 320	16.620	8	198.2	5000	110



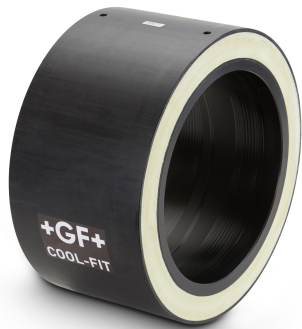
COOL-FIT 4.0 Coupler d32-d225

Model:

- Pre-insulated PE100 SDR 11 metric
- Insulation made from GF HE foam
- Impact resistant. Color: black
- Electrofusion fitting with integrated sealing lip, for a moisture-proof and vapour tight sealing



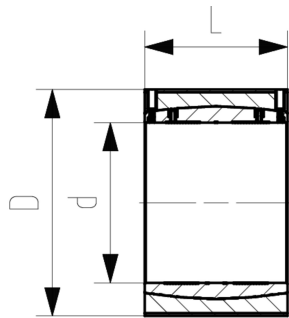
d (mm)	D (mm)	DN (mm)	SDR	PN (bar)	Code	Weight (kg)	D1 (mm)	L (mm)	L1 (mm)	z (mm)
32	90	25	11	16	738 913 108	0.179	97	127	36	5
40	110	32	11	16	738 913 109	0.129	117	133	40	3
50	110	40	11	16	738 913 110	0.169	117	141	44	3
63	125	50	11	16	738 913 111	0.240	132	149	48	3
75	140	65	11	16	738 913 112	0.520	147	163	55	3
90	160	80	11	16	738 913 113	0.750	168	178	62	4
110	180	100	11	16	738 913 114	0.831	188	198	72	4
140	225	125	11	16	738 913 116	1.565	233	221	84	3
160	250	150	11	16	738 913 117	1.726	258	233	90	3
225	315	200	11	16	738 913 120	3.783	324	275	110	5



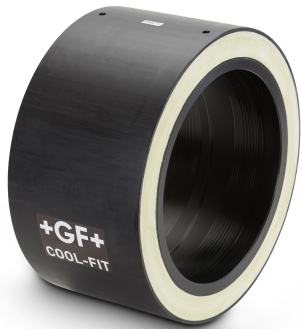
COOL-FIT 4.0 Coupler d250-d450

Model:

- Pre-insulated PE100 SDR 17 metric
- Insulation made from GF HE foam
- Outer jacket impact resistant. Color: black



d (mm)	D (mm)	DN (mm)	SDR	PN (bar)	Code	Weight (kg)	L (mm)
250	355	250	17	10	738 911 821	6.290	247
280	400	250	17	10	738 911 822	8.020	252
315	450	300	17	10	738 911 823	9.110	267
355	500	350	17	10	738 911 824	13.780	290
400	560	400	17	10	738 911 875	23.450	294
450	630	450	17	10	738 911 876	22.590	326



COOL-FIT 4.0 Coupler d250-d450, SDR11

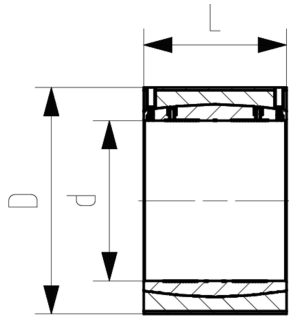
Model:

- Pre-insulated PE100 SDR11 metric
- Insulation made from GF HE foam
- Outer jacket impact resistant. Color: black

Note:

Make to order

d (mm)	D (mm)	DN (mm)	SDR	PN (bar)	Code	Weight (kg)	L (mm)
250	355	250	11	16	738 913 271	6.352	247
280	400	250	11	16	738 913 272	9.910	252
315	450	300	11	16	738 913 273	11.150	267
355	500	350	11	16	738 913 274	17.356	290
400	560	400	11	16	738 913 275	23.770	294
450	630	450	11	16	738 913 276	31.290	326

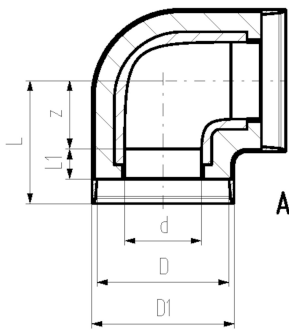


COOL-FIT 4.0 Elbow 90° d32-d225

Model:

- Pre-insulated PE100 SDR11, metric
- Insulation made from GF HE foam
- Outer jacket impact resistant. Color: black
- A: Electrofusion Fitting with integrated sealing lip, for a water and vapour tight sealing

d (mm)	D (mm)	DN (mm)	SDR	PN (bar)	Code	Weight (kg)	D1 (mm)	L (mm)	L1 (mm)	Type	z (mm)
32	90	25	11	16	738 103 108	0.255	97	81	36	A	20
40	110	32	11	16	738 103 109	0.177	117	88	40	A	23
50	110	40	11	16	738 103 110	0.250	117	99	44	A	30
63	125	50	11	16	738 103 111	0.372	132	107	48	A	34
75	140	65	11	16	738 103 112	0.800	147	120	55	A	40
90	160	80	11	16	738 103 113	1.500	168	150	62	A	63
110	180	100	11	16	738 103 114	1.950	188	174	72	A	77
140	225	125	11	16	738 103 116	3.707	233	196	84	A	87
160	250	150	11	16	738 103 117	5.200	258	220	90	A	105
225	315	200	11	16	738 103 120	12.400	324	345	110	A	210



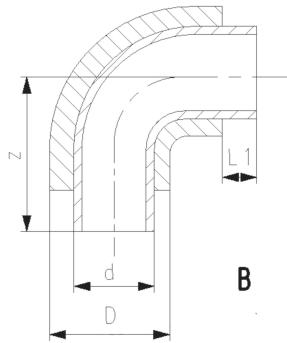


**COOL-FIT 4.0 Bend 90°
d250-d450**

Model:

- Pre-insulated PE100 SDR 17 metric
- Insulation made from GF HE foam
- Outer jacket impact resistant. Color: black
- B: Spigot Fitting with free end (separate electrofusion fitting needed for joining)

d (mm)	D (mm)	DN (mm)	SDR	PN (bar)	Code	Weight (kg)	L1 (mm)	Type	z (mm)
250	355	250	17	10	738 003 121	11.800	123	B	375
280	400	250	17	10	738 003 122	16.560	126	B	430
315	450	300	17	10	738 003 123	28.800	133	B	470
355	500	350	17	10	738 003 124	25.000	148	B	900
400	560	400	17	10	738 003 175	59.640	150	B	980
450	630	450	17	10	738 003 176	79.200	165	B	1070



**COOL-FIT 4.0 Bend 90°
d250-d450, SDR11**

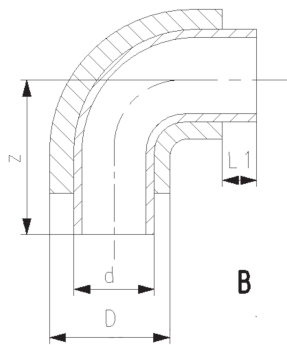
Model:

- Pre-insulated PE100 SDR11 metric
- Insulation made from GF HE foam
- Outer jacket impact resistant. Color: black
- B: Spigot Fitting with free end (separate electrofusion fitting needed for joining)

Note:

Make to order

d (mm)	D (mm)	DN (mm)	SDR	PN (bar)	Code	Weight (kg)	L1 (mm)	Type	z (mm)
250	355	250	11	16	738 003 271	11.900	123	B	375
280	400	250	11	16	738 003 272	18.252	126	B	430
315	450	300	11	16	738 003 273	28.750	133	B	470
355	500	350	11	16	738 003 274	65.000	148	B	900
400	560	400	11	16	738 003 275	81.840	150	B	980
450	630	450	11	16	738 003 276	109.900	165	B	1070

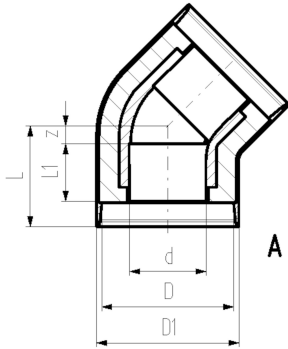




COOL-FIT 4.0 Elbow 45° d32-d225

Model:

- Pre-insulated PE100 SDR11, metric
- Insulation made from GF HE foam
- Outer jacket impact resistant. Color: black
- A: Electrofusion Fitting with integrated sealing lip, for a water and vapour tight sealing



d (mm)	D (mm)	DN (mm)	SDR	PN (bar)	Code	Weight (kg)	D1 (mm)	L (mm)	L1 (mm)	Type	z (mm)
32	90	25	11	16	738 153 108	0.108	97	72	36	A	11
40	110	32	11	16	738 153 109	0.162	117	76	40	A	11
50	110	40	11	16	738 153 110	0.218	117	82	44	A	13
63	125	50	11	16	738 153 111	0.315	132	89	48	A	16
75	140	65	11	16	738 153 112	0.650	147	98	55	A	18
90	160	80	11	16	738 153 113	1.030	168	117	62	A	30
110	180	100	11	16	738 153 114	1.270	188	138	72	A	41
140	225	125	11	16	738 153 116	2.958	233	157	84	A	48
160	250	150	11	16	738 153 117	4.100	258	161	90	A	46
225	315	200	11	16	738 153 120	17.603	324	278	110	A	143

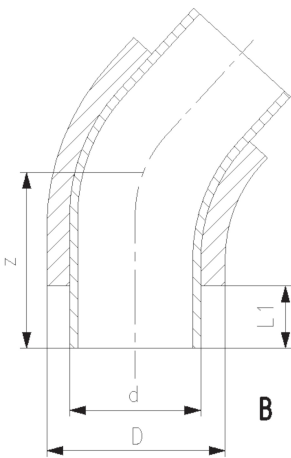
COOL-FIT 4.0 Bend 45° d250-d450

Model:

- Pre-insulated PE100 SDR 17 metric
- Insulation made from GF HE foam
- Outer jacket impact resistant. Color: black
- B: Spigot Fitting with free end (separate electrofusion fitting needed for joining)



d (mm)	D (mm)	DN (mm)	SDR	PN (bar)	Code	Weight (kg)	L1 (mm)	Type	z (mm)
250	355	250	17	10	738 053 121	12.840	123	B	440
280	400	250	17	10	738 053 122	18.000	126	B	460
315	450	300	17	10	738 053 123	21.360	133	B	535
355	500	350	17	10	738 053 124	18.720	148	B	620
400	560	400	17	10	738 053 175	43.920	150	B	650
450	630	450	17	10	738 053 176	54.360	165	B	680



COOL-FIT 4.0 Bend 45°
d250-d450, SDR11



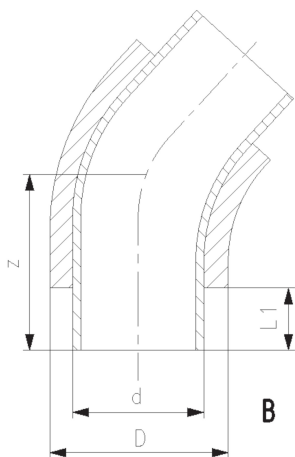
Model:

- Pre-insulated PE100 SDR11 metric
- Insulation made from GF HE foam
- Outer jacket impact resistant. Color: black
- B: Spigot Fitting with free end (separate electrofusion fitting needed for joining)

Note:

Make to order

d (mm)	D (mm)	DN (mm)	SDR	PN (bar)	Code	Weight (kg)	L1 (mm)	Type	z (mm)
250	355	250	11	16	738 053 271	15.150	123	B	440
280	400	250	11	16	738 053 272	25.000	126	B	460
315	450	300	11	16	738 053 273	28.490	133	B	535
355	500	350	11	16	738 053 274	46.380	148	B	620
400	560	400	11	16	738 053 275	55.820	150	B	650
450	630	450	11	16	738 053 276	78.860	165	B	680



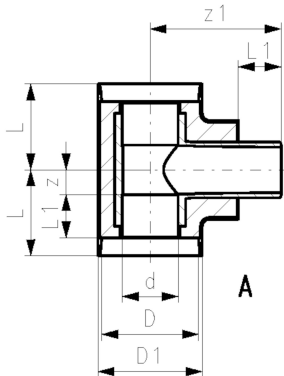
COOL-FIT 4.0 T90° equal
d32-d225



Model:

- Pre-insulated PE100 SDR11, metric
- Insulation made from GF HE foam
- Outer jacket impact resistant. Color: black
- A: Electrofusion Fitting with integrated sealing lip, for a water and vapour tight sealing

d (mm)	D (mm)	DN (mm)	SDR	PN (bar)	Code	Weight (kg)	D1 (mm)	L (mm)	L1 (mm)	Type	z (mm)	z1 (mm)
32	90	25	11	16	738 203 108	0.161	97	79	36	A	18	118.0
40	110	32	11	16	738 203 109	0.257	117	87	40	A	22	132.0
50	110	40	11	16	738 203 110	0.342	117	94	44	A	25	138.0
63	125	50	11	16	738 203 111	0.514	132	103	48	A	30	154.0
75	140	65	11	16	738 203 112	1.000	147	116	55	A	36	168.0
90	160	80	11	16	738 203 113	1.400	168	130	62	A	43	187.0
110	180	100	11	16	738 203 114	2.500	188	154	72	A	57	207.0
140	225	125	11	16	738 203 116	4.627	233	175	84	A	66	257.3
160	250	150	11	16	738 203 117	5.600	258	192	90	A	77	263.0
225	315	200	11	16	738 203 120	16.748	324	355	110	A	220	337.0





COOL-FIT 4.0 T90° equal
d250-d450, SDR11

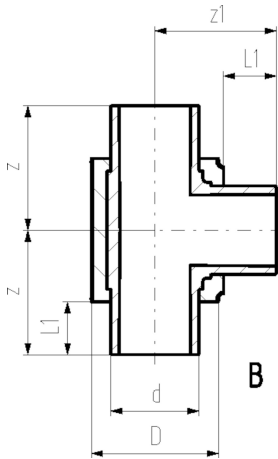
Model:

- Pre-insulated PE100 SDR11 metric
- Insulation made from GF HE foam
- Outer jacket impact resistant. Color: black
- B: Spigot Fitting with free end (separate electrofusion fitting needed for joining)

Note:

Make to order

d	D	DN	SDR	PN	Code	Weight	L1	Type	z	z1
(mm)	(mm)	(mm)		(bar)		(kg)	(mm)		(mm)	(mm)
250	355	250	11	16	738 203 271	16.100	123	B	500	500
280	400	250	11	16	738 203 272	27.620	126	B	500	500
315	450	300	11	16	738 203 273	29.650	133	B	500	500
355	500	350	11	16	738 203 274	43.400	148	B	650	700
400	560	400	11	16	738 203 275	59.700	150	B	650	700
450	630	450	11	16	738 203 276	91.200	165	B	700	750



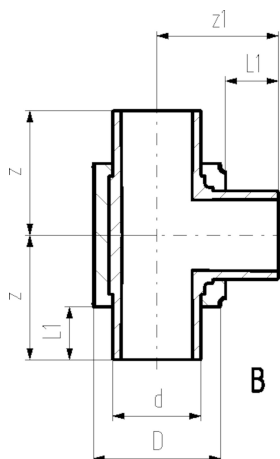
**COOL-FIT 4.0 T90° equal
d250-d450**



Model:

- Pre-insulated PE100 SDR 17 metric
- Insulation made from GF HE foam
- Outer jacket impact resistant. Color: black
- B: Spigot Fitting with free end (separate electrofusion fitting needed for joining)

d (mm)	D (mm)	DN (mm)	SDR	PN (bar)	Code	Weight (kg)	L1 (mm)	Type	z (mm)	z1 (mm)
250	355	250	17	10	738 203 121	12.000	123	B	500	500
280	400	250	17	10	738 203 122	22.300	126	B	500	500
315	450	300	17	10	738 203 123	21.480	133	B	500	500
355	500	350	17	10	738 203 124	30.600	148	B	650	700
400	560	400	17	10	738 203 175	42.000	150	B	650	700
450	630	450	17	10	738 203 176	67.200	165	B	700	750



**COOL-FIT 4.0 T90° reduced
d75 – d225**



Model:

- Pre-insulated PE100 SDR11, metric
- Insulation made from GF HE foam
- Outer jacket impact resistant. Color: black
- A: Electrofusion Fitting with integrated sealing lip, for a water and vapour tight sealing

d (mm)	d1 (mm)	D (mm)	D1 (mm)	DN (mm)	SDR	PN (bar)	Code	Weight (kg)
75	63	140	125	65	11	16	738 203 218	0.863
90	63	160	125	80	11	16	738 203 222	1.232
90	75	160	140	80	11	16	738 203 223	1.293
110	63	180	125	100	11	16	738 203 227	1.972
110	75	180	140	100	11	16	738 203 228	1.949
110	90	180	160	100	11	16	738 203 229	2.037
140	63	225	125	125	11	16	738 203 240	4.225
140	75	225	140	125	11	16	738 203 241	4.225
140	90	225	160	125	11	16	738 203 242	4.047
140	110	225	180	125	11	16	738 203 243	4.218
160	63	250	125	150	11	16	738 203 447	4.250
160	90	250	160	150	11	16	738 203 449	4.420
160	110	250	180	150	11	16	738 203 450	4.590
160	140	250	225	150	11	16	738 203 251	5.666
160	140	250	200	150	11	16	738 204 251	5.540
225	63	315	125	200	11	16	738 203 264	16.832
225	90	315	160	200	11	16	738 203 266	16.889

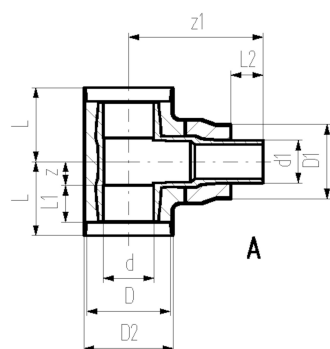
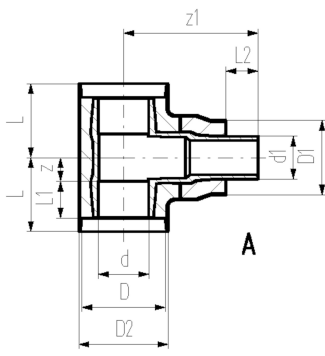


table continued on the next page



d	d1	D	D1	DN	SDR	PN	Code	Weight
(mm)	(mm)	(mm)	(mm)	(mm)		(bar)		(kg)
225	110	315	180	200	11	16	738 203 267	16.805
225	140	315	225	200	11	16	738 203 268	18.909
225	140	315	200	200	11	16	738 204 268	17.100
225	160	315	250	200	11	16	738 203 269	18.500

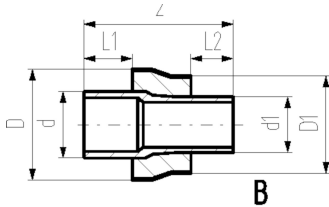
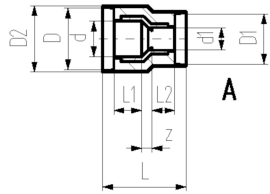
d	d1	D2	L	L1	L2	Type	z	z1
(mm)	(mm)	(mm)	(mm)	(mm)	(mm)		(mm)	(mm)
75	63	147	116	55	48	A	36	228.0
90	63	168	130	62	48	A	43	253.0
90	75	168	130	62	55	A	43	252.0
110	63	188	154	72	48	A	57	267.0
110	75	188	154	72	55	A	57	268.0
110	90	188	154	72	62	A	57	268.0
140	63	233	175	84	48	A	66	221.0
140	75	233	175	84	55	A	66	231.0
140	90	233	175	84	62	A	66	234.0
140	110	233	175	84	72	A	66	243.0
160	63	258	192	90	48	A	77	221.0
160	90	258	192	90	62	A	77	235.0
160	110	258	192	90	72	A	77	245.0
160	140	258	192	90	84	A	77	256.1
160	140	258	192	90	84	A	77	340.0
225	63	324	355	110	48	A	220	412.0
225	90	324	355	110	62	A	220	412.0
225	110	324	355	110	72	A	220	412.0
225	140	324	355	110	84	A	220	413.0
225	140	324	335	110	84	A	220	412.0
225	160	324	355	110	90	A	220	396.0



COOL-FIT 4.0 Reducer d32-d225

Model:

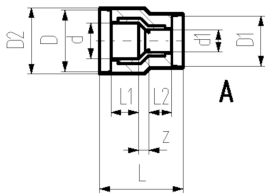
- Pre-insulated PE100 SDR11, metric
- Insulation made from GF HE foam
- Outer jacket impact resistant. Color: black
- A: Electrofusion Fitting with integrated sealing lip, for a water and vapour tight sealing
- B: Spigot Fitting with free end
- 738 904 351 and 738 904 368 for direct transitions from COOL-FIT 4.0 to COOL-FIT 2.0



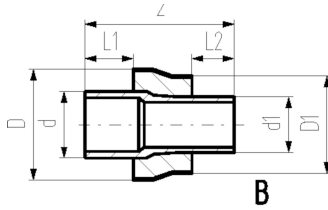
d (mm)	d1 (mm)	D (mm)	D1 (mm)	DN (mm)	SDR	PN (bar)	Code	Weight (kg)
40	32	110	90	32	11	16	738 903 206	0.250
50	32	110	90	40	11	16	738 903 209	0.280
50	40	110	110	40	11	16	738 903 210	0.320
63	32	125	90	50	11	16	738 903 212	0.217
63	40	125	110	50	11	16	738 903 213	0.232
63	50	125	110	50	11	16	738 903 214	0.243
75	63	140	125	65	11	16	738 903 318	0.264
90	63	160	125	80	11	16	738 903 322	0.387
90	75	160	140	80	11	16	738 903 323	0.416
110	63	180	125	100	11	16	738 903 327	0.566
110	75	180	140	100	11	16	738 903 328	0.577
110	90	180	160	100	11	16	738 903 329	0.644
140	63	225	125	125	11	16	738 903 340	1.118
140	75	225	140	125	11	16	738 903 341	1.202
140	90	225	160	125	11	16	738 903 342	1.251
140	110	225	180	125	11	16	738 903 343	1.271
160	63	250	125	150	11	16	738 903 347	1.298
160	90	250	160	150	11	16	738 903 349	1.323
160	110	250	180	150	11	16	738 903 350	1.362
160	140	250	225	150	11	16	738 903 351	1.845
160	140	250	200	150	11	16	738 904 351	1.664
225	63	315	125	200	11	16	738 903 364	2.960
225	90	315	160	200	11	16	738 903 366	3.018
225	110	315	180	200	11	16	738 903 367	3.079
225	140	315	225	200	11	16	738 903 368	3.443
225	140	315	200	200	11	16	738 904 368	3.172
225	160	315	250	200	11	16	738 903 369	3.550

d (mm)	d1 (mm)	D2 (mm)	L (mm)	L1 (mm)	L2 (mm)	Type	z (mm)
40	32	117	143	40	36	A	17
50	32	117	151	44	36	A	21
50	40	117	149	44	40	A	15
63	32	132	160	48	36	A	26
63	40	132	159	48	40	A	21
63	50	132	159	48	44	A	17
75	63			55	48	B	170
90	63			62	48	B	190
90	75			62	55	B	189
110	63			72	48	B	204
110	75			72	55	B	205
110	90			72	62	B	205
140	63			84	48	B	225
140	75			84	55	B	237
140	90			84	62	B	238
140	110			84	72	B	233
160	63			90	48	B	244
160	90			90	62	B	244
160	110			90	72	B	242
160	140			90	84	B	257
160	140			90	84	B	257
225	63			110	48	B	295

table continued on the next page



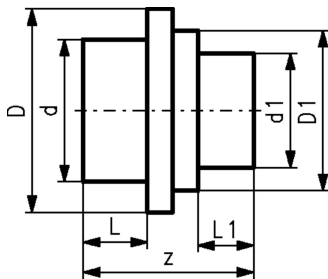
d	d1	D2	L	L1	L2	Type	z
(mm)	(mm)	(mm)	(mm)	(mm)	(mm)		(mm)
225	90			110	62	B	295
225	110			110	72	B	295
225	140			110	84	B	296
225	140			110	84	B	296
225	160			110	90	B	279



COOL-FIT 4.0 Reducer d250-d450

Model:

- Pre-insulated PE100 SDR 17 metric
- Insulation made from GF HE foam
- Outer jacket impact resistant. Color: black
- B: Spigot Fitting with free end (separate electrofusion fitting needed for joining)



d	d1	D	D1	DN	SDR	PN	Code	Weight	L	L1	Type	z
(mm)	(mm)	(mm)	(mm)	(mm)		(bar)		(kg)	(mm)	(mm)		(mm)
250	225	355	315	250	17	10	738 903 825	2.800	123	110	B	332
280	225	400	315	250	17	10	738 903 829	4.700	126	110	B	335
280	250	450	355	250	17	10	738 903 830	5.100	133	110	B	365
315	225	450	315	300	17	10	738 903 836	7.100	126	110	B	340
315	250	450	355	300	17	10	738 903 837	7.400	133	123	B	365
315	280	450	400	300	17	10	738 903 838	6.800	133	126	B	365
355	250	500	355	350	17	10	738 903 844	8.200	148	123	B	390
355	280	500	400	350	17	10	738 903 845	7.700	148	126	B	390
355	315	500	450	350	17	10	738 903 846	8.300	148	133	B	390
400	280	560	400	400	17	10	738 903 853	9.100	150	126	B	415
400	315	560	450	400	17	10	738 903 854	11.400	150	133	B	420
400	355	560	500	400	17	10	738 903 855	11.000	150	148	B	405
450	280	630	400	450	17	10	738 903 862	13.200	165	126	B	390
450	315	630	450	450	17	10	738 903 863	13.600	165	133	B	390
450	355	630	500	450	17	10	738 903 864	13.700	165	148	B	393
450	400	630	560	450	17	10	738 903 865	14.800	165	150	B	395



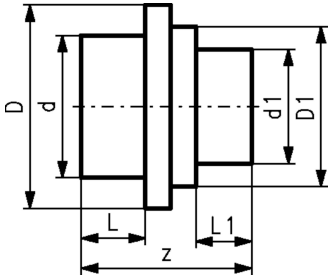
COOL-FIT 4.0 Reducer
d250-d450, SDR11

Model:

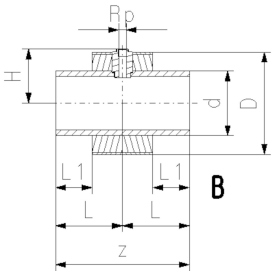
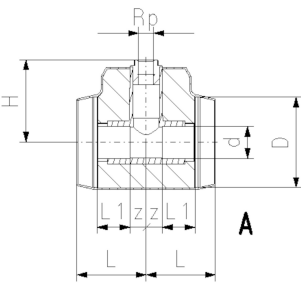
- Pre-insulated PE100 SDR11 metric
- Insulation made from GF HE foam
- Outer jacket impact resistant. Color: black
- B: Spigot Fitting with free end (separate electrofusion fitting needed for joining)

Note:

Make to order



d	d1	D	D1	DN	SDR	PN	Code	Weight	L	L1	Type	z
(mm)	(mm)	(mm)	(mm)	(mm)		(bar)		(kg)	(mm)	(mm)		(mm)
250	225	355	315	250	11	16	738 903 925	5.365	123	110	B	332
280	225	400	315	250	11	16	738 903 929	6.750	126	110	B	335
280	250	400	355	250	11	16	738 903 930	7.228	126	123	B	340
315	225	450	315	300	11	16	738 903 936	8.690	133	110	B	365
315	250	450	355	300	11	16	738 903 937	9.340	133	123	B	365
315	280	450	400	300	11	16	738 903 939	9.660	133	126	B	365
355	250	500	355	350	11	16	738 903 944	10.218	148	123	B	390
355	280	500	400	350	11	16	738 903 945	10.472	148	126	B	390
355	315	500	450	350	11	16	738 903 946	10.960	148	133	B	390
400	280	560	400	400	11	16	738 903 953	11.590	150	126	B	415
400	315	560	450	400	11	16	738 903 954	12.590	150	133	B	415
400	355	560	500	400	11	16	738 903 955	12.980	150	148	B	420
450	280	630	400	450	11	16	738 903 962	17.900	165	126	B	405
450	315	630	450	450	11	16	738 903 963	18.500	165	133	B	390
450	355	630	500	450	11	16	738 903 964	19.300	165	148	B	393
450	400	630	560	450	11	16	738 903 965	20.336	165	150	B	395



**COOL-FIT 4.0 Installation fitting type 313 Rp
d32-d225**

Model:

- Pre-insulated, PE100, SDR11, metric
- Insulation made from GF HE foam
- Impact resistant. Color: black
- With threaded branch for sensors (i.e temperature, pressure)
- A: Electrofusion Fitting with integrated sealing lip, for a water and vapour tight sealing
- B: Spigot Fitting with free end

d (mm)	D (mm)	Thread Size (inch)	DN (mm)	SDR	PN (bar)	Code	Weight (kg)	H (mm)	L (mm)	L1 (mm)	Type	z (mm)
32	90	Rp ½	25	11	16	738 313 608	0.169	95	79	36	A	18
40	110	Rp ½	32	11	16	738 313 609	0.267	105	87	40	A	22
40	110	Rp ¾	32	11	16	738 313 659	0.269	108	87	40	A	22
50	110	Rp ½	40	11	16	738 313 610	0.354	107	94	44	A	25
50	110	Rp ¾	40	11	16	738 313 660	0.356	110	94	44	A	25
63	125	Rp ½	50	11	16	738 313 611	0.537	120	103	48	A	30
63	125	Rp ¾	50	11	16	738 313 661	0.539	123	103	48	A	30
75	140	Rp ½	65	11	16	738 313 612	0.773	127	116	55	A	36
75	140	Rp ¾	65	11	16	738 313 662	0.774	130	116	55	A	36
90	160	Rp ½	80	11	16	738 313 613	1.164	139	130	62	A	43
90	160	Rp ¾	80	11	16	738 313 663	1.165	142	130	62	A	43
110	180	Rp ½	100	11	16	738 313 614	1.944	151	154	72	A	57
110	180	Rp ¾	100	11	16	738 313 664	1.944	154	154	72	A	57
140	225	Rp ½	125	11	16	738 313 616	3.974	187	175	84	A	66
140	225	Rp ¾	125	11	16	738 313 666	3.964	190	175	84	A	66
160	250	Rp ½	150	11	16	738 313 617	2.496	134	165	90	B	330
160	250	Rp ¾	150	11	16	738 313 667	2.489	134	165	90	B	330
225	315	Rp ½	200	11	16	738 313 620	5.155	166	185	110	B	370
225	315	Rp ¾	200	11	16	738 313 670	5.146	169	185	110	B	370



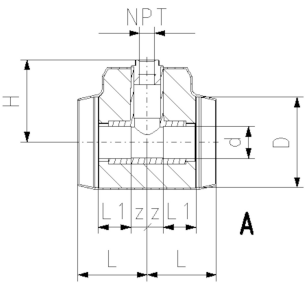
**COOL-FIT 4.0 Installation fitting type 313 NPT
d32-d225**

Model:

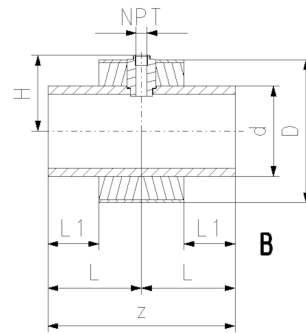
- Pre-insulated PE100 SDR11 ANSI
- Insulation made from GF HE foam
- Impact resistant. Color: black
- With threaded branch for sensors (i.e temperature, pressure)
- A: Electrofusion Fitting with integrated sealing lip, for a water and vapour tight sealing
- B: Spigot Fitting with free end



B



A



B

d (mm)	D (mm)	Thread	Thread Type	Size (inch)	DN (mm)	SDR	PN (bar)	Code	Weight (kg)
32	90	NPT	NPT	½	25	11	16	738 313 508	0.169
40	110	NPT	NPT	½	32	11	16	738 313 509	0.267
40	110	NPT	NPT	¾	32	11	16	738 313 559	0.269
50	110	NPT	NPT	½	40	11	16	738 313 510	0.354
50	110	NPT	NPT	¾	40	11	16	738 313 560	0.356
63	125	NPT	NPT	½	50	11	16	738 313 511	0.537
63	125	NPT	NPT	¾	50	11	16	738 313 561	0.539
75	140	NPT	NPT	½	65	11	16	738 313 512	0.773
75	140	NPT	NPT	¾	65	11	16	738 313 562	0.774
90	160	NPT	NPT	½	80	11	16	738 313 513	1.164
90	160	NPT	NPT	¾	80	11	16	738 313 563	1.165
110	180	NPT	NPT	½	100	11	16	738 313 514	1.944
110	180	NPT	NPT	¾	100	11	16	738 313 564	1.944
140	225	NPT	NPT	½	125	11	16	738 313 516	3.974
140	225	NPT	NPT	¾	125	11	16	738 313 566	3.964
160	250	NPT	NPT	½	150	11	16	738 313 517	2.496
160	250	NPT	NPT	¾	150	11	16	738 313 567	2.489
225	315	NPT	NPT	½	200	11	16	738 313 520	5.155
225	315	NPT	NPT	¾	200	11	16	738 313 570	5.146

d (mm)	L (mm)	L1 (mm)	H (mm)	Type	z (mm)
32	79	36	95	A	18
40	87	40	105	A	22
40	87	40	108	A	22
50	94	44	107	A	25
50	94	44	110	A	25
63	103	48	120	A	30
63	103	48	123	A	30
75	116	55	127	A	36
75	116	55	130	A	36
90	130	62	139	A	43
90	130	62	142	A	43
110	154	72	151	A	57
110	154	72	154	A	57
140	175	84	187	A	66
140	175	84	190	A	66
160	165	90	134	B	330
160	165	90	134	B	330
225	185	110	166	B	370
225	185	110	169	B	370

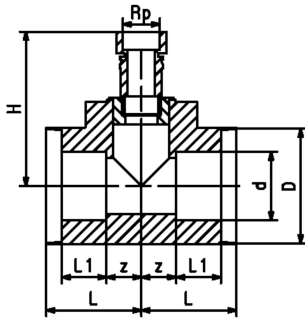
COOL-FIT 4.0 Transition Fittings



COOL-FIT 4.0 Transition Tee90° PE/brass With female thread Rp

Model:

- Pre-insulated PE100 SDR11, metric
- Brass CuZn40Pb2 with female thread Rp
- Insulation made from GF HE foam
- Impact resistant. Color: black
- Electrofusion Fitting with integrated sealing lip, for a water and vapour tight sealing



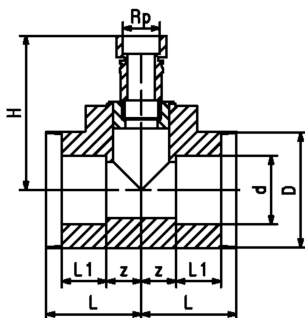
d (mm)	D (mm)	Thread	Size (inch)	DN (mm)	SDR	PN (bar)	Code	Weight (kg)	H (mm)	L (mm)	L1 (mm)	z (mm)
63	125	Rp	2	50	11	16	738 953 061	1.700	222	103	48	30
75	140	Rp	2	65	11	16	738 953 062	1.900	226	116	55	36
90	160	Rp	2	80	11	16	738 953 063	2.300	241	130	62	43
110	180	Rp	2	100	11	16	738 953 064	3.100	251	154	72	57
160	250	Rp	2	150	11	16	738 953 067	5.450	289	165	90	77
225	315	Rp	2	200	11	16	738 953 070	18.100	446	185	110	220
40	110	Rp	1	32	11	16	738 953 159	0.500	173	87	40	22
50	110	Rp	1	40	11	16	738 953 160	0.588	173	94	44	25
63	125	Rp	1	50	11	16	738 953 161	0.760	186	103	48	30
75	140	Rp	1	65	11	16	738 953 162	1.246	193	116	55	36
90	160	Rp	1	80	11	16	738 953 163	1.650	205	130	62	43
110	180	Rp	1	100	11	16	738 953 164	2.750	215	154	72	57
160	250	Rp	1	150	11	16	738 953 167	4.450	253	165	90	77
225	315	Rp	1	200	11	16	738 953 170	17.100	444	185	110	220



COOL-FIT 4.0 Transition Tee90° PE/stainless steel With female thread Rp

Model:

- Pre-insulated PE100 SDR11, metric
- Stainless steel 1.4404 / 316L with female thread Rp
- Insulation made from GF HE foam
- Impact resistant. Color: black
- Electrofusion Fitting with integrated sealing lip, for a water and vapour tight sealing



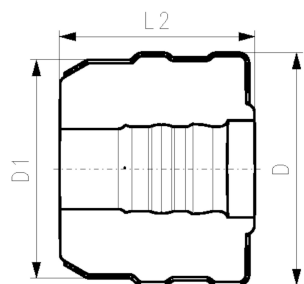
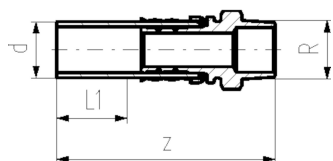
d (mm)	D (mm)	Thread	Size (inch)	DN (mm)	SDR	PN (bar)	Code	Weight (kg)	H (mm)	L (mm)	L1 (mm)	z (mm)
63	125	Rp	2	50	11	16	738 943 061	1.700	222	103	48	30
75	140	Rp	2	65	11	16	738 943 062	2.150	226	116	55	36
90	160	Rp	2	80	11	16	738 943 063	2.530	241	130	62	43
110	180	Rp	2	100	11	16	738 943 064	3.650	251	154	72	57
160	250	Rp	2	150	11	16	738 943 067	5.380	289	165	90	77
225	315	Rp	2	200	11	16	738 943 070	18.100	446	185	110	220
40	110	Rp	1	32	11	16	738 943 159	0.490	173	87	40	22
50	110	Rp	1	40	11	16	738 943 160	0.575	173	94	44	25
63	125	Rp	1	50	11	16	738 943 161	0.747	186	103	48	30
75	140	Rp	1	65	11	16	738 943 162	1.233	193	116	55	36
90	160	Rp	1	80	11	16	738 943 163	1.633	205	130	62	43
110	180	Rp	1	100	11	16	738 943 164	2.733	215	154	72	57
160	250	Rp	1	150	11	16	738 943 167	4.483	253	165	90	77
225	315	Rp	1	200	11	16	738 943 170	17.100	444	185	110	220



COOL-FIT 4.0 Adaptor fitting PE/stainless steel With male thread R

Model:

- Spigot fitting PE100 SDR11, metric with free end
- Stainless steel 1.4404 / 316L with male thread R
- Gasket: O-ring EPDM
- Including Insulation half shells



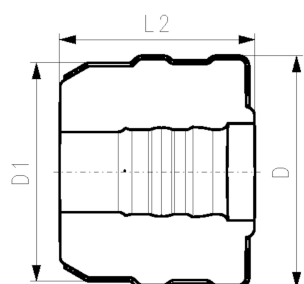
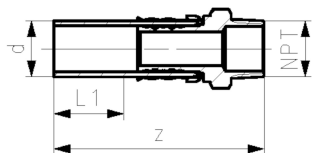
d (mm)	D (mm)	Thread	Size (inch)	DN (mm)	SDR	PN (bar)	Code	Weight (kg)	D1 (mm)	L1 (mm)	L2 (mm)	z (mm)
32	103	R	½	25	11	16	738 943 508	0.224	90	36	80	130
32	103	R	¾	25	11	16	738 943 518	0.232	90	36	80	134
32	103	R	1	25	11	16	738 943 528	0.241	90	36	80	134
40	128	R	1 ¼	32	11	16	738 943 509	0.655	110	40	91	156
50	138	R	1 ½	40	11	16	738 943 510	1.020	110	44	96	168
63	149	R	2	50	11	16	738 943 511	1.458	125	48	103	179



COOL-FIT 4.0 Adaptor fitting PE/stainless steel with male thread NPT

Model:

- Spigot fitting PE100 SDR11, ANSI with free end
- Stainless steel 1.4404 / 316L with male thread NPT
- Gasket: O-ring EPDM
- Including insulation half shells



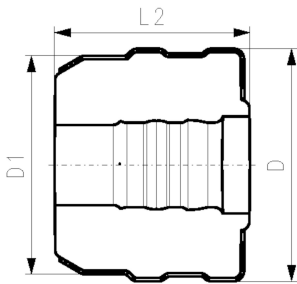
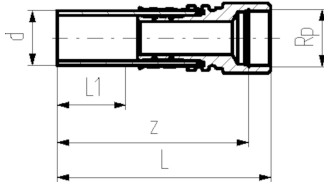
d (mm)	D (mm)	Thread	Size (inch)	DN (mm)	SDR	PN (bar)	Code	Weight (kg)	D1 (mm)	L1 (mm)	L2 (mm)	z (mm)
32	103	NPT	½	25	11	16	738 943 808	0.224	90	36	80	129
32	103	NPT	¾	25	11	16	738 943 818	0.232	90	36	80	133
32	103	NPT	1	25	11	16	738 943 828	0.241	90	36	80	134
40	128	NPT	1 ¼	32	11	16	738 943 809	0.655	110	40	91	151
50	138	NPT	1 ½	40	11	16	738 943 810	1.021	110	44	96	163
63	149	NPT	2	50	11	16	738 943 811	1.459	125	48	103	174



**COOL-FIT 4.0 Adaptor fitting PE/stainless steel
With female thread Rp**

Model:

- Spigot fitting PE100 SDR11, metric with free end
- Stainless steel 1.4404 / 316L with female thread Rp
- Gasket: O-ring EPDM
- Including Insulation half shells



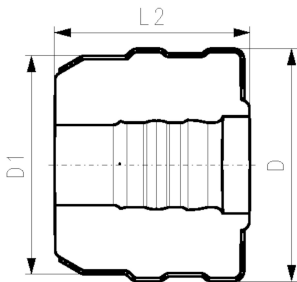
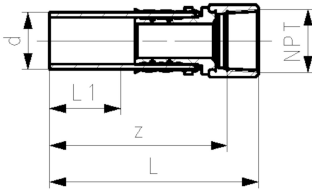
d (mm)	D (mm)	Thread	Size (inch)	DN (mm)	SDR	PN (bar)	Code	Weight (kg)	D1 (mm)	L (mm)	L1 (mm)	L2 (mm)	z (mm)
32	104	Rp	½	25	11	16	738 943 008	0.247	90	132	36	101	118
32	104	Rp	¾	25	11	16	738 943 018	0.272	90	132	36	101	116
32	104	Rp	1	25	11	16	738 943 028	0.297	90	132	36	101	115
40	128	Rp	1 ¼	32	11	16	738 943 009	0.683	110	157	40	91	141
50	138	Rp	1 ½	40	11	16	738 943 010	0.734	110	157	44	96	128
63	149	Rp	2	50	11	16	738 943 011	1.244	125	164	48	103	140



**COOL-FIT 4.0 Adaptor fitting PE/stainless steel
With female thread NPT**

Model:

- Spigot fitting PE100 SDR11, ANSI with free end
- Stainless steel 1.4404 / 316L with female thread NPT
- Gasket: O-ring EPDM
- Including Insulation half shells



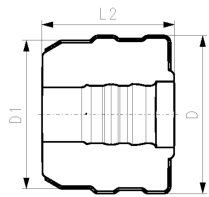
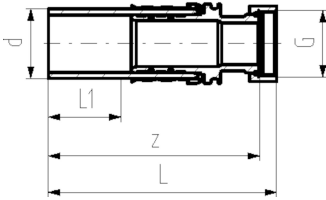
d (mm)	D (mm)	Thread	Size (inch)	DN (mm)	SDR	PN (bar)	Code	Weight (kg)	D1 (mm)	L (mm)	L1 (mm)	L2 (mm)	z (mm)
32	104	NPT	½	25	11	16	738 943 408	0.247	90	132	36	101	114
32	104	NPT	¾	25	11	16	738 943 418	0.272	90	132	36	101	114
32	104	NPT	1	25	11	16	738 943 428	0.297	90	132	36	101	114
40	128	NPT	1 ¼	32	11	16	738 943 409	0.683	110	147	40	91	125
50	138	NPT	1 ½	40	11	16	738 943 410	0.735	110	147	44	96	124
63	149	NPT	2	50	11	16	738 943 411	1.245	125	159	48	103	136



COOL-FIT 4.0 Adaptor fitting PE/stainless steel With loose union nut G

Model:

- Spigot fitting PE100 SDR11, metric with free end
- Stainless steel 1.4404 / 316L with loose union nut G
- Including flat seal EPDM
- Including insulation half shells

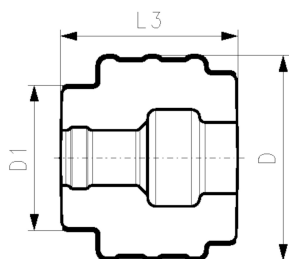
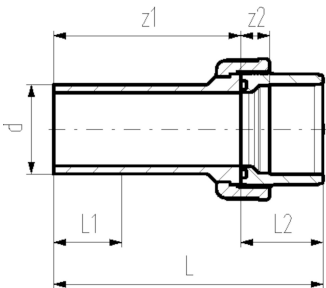


d (mm)	D (mm)	Thread (inch)	Size (mm)	DN (mm)	SDR	PN (bar)	Code	Weight (kg)	D1 (mm)	L (mm)	L1 (mm)	L2 (mm)	z (mm)
32	104	G	½	25	11	16	738 943 308	0.250	90	133	36	101	126
32	104	G	¾	25	11	16	738 943 318	0.264	90	135	36	101	129
32	104	G	1	25	11	16	738 943 328	0.296	90	135	36	101	129
40	128	G	1 ¼	32	11	16	738 943 309	0.595	110	155	40	91	148
40	128	G	1 ½	32	11	16	738 943 319	0.655	110	157	40	91	148
50	138	G	1 ½	40	11	16	738 943 310	0.820	110	164	44	96	154
63	149	G	2	50	11	16	738 943 311	1.307	125	186	48	103	170

COOL-FIT 4.0 Adaptor union PE/ABS

Model:

- Union bush: ABS Solvent cement socket
- Union End: Spigot fitting PE100 SDR11, metric with free end
- Gasket: O-ring EPDM Nr. 748 410 008-014
- Union Nut: ABS
- Including insulation half shells



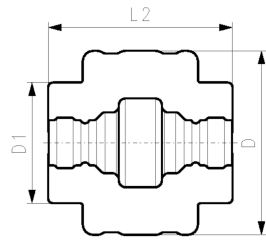
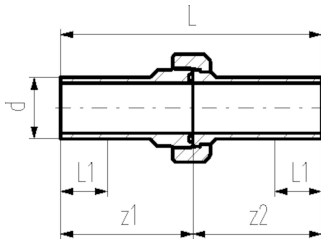
d (mm)	D (mm)	DN (mm)	SDR	PN (bar)	Code	Weight (kg)	D1 (mm)	L (mm)	L1 (mm)	L2 (mm)	L3 (mm)	z1 (mm)	z2 (mm)
32	134	25	11	10	738 513 708	0.169	90	137	36	33	109	104	11
40	143	32	11	10	738 513 709	0.256	110	156	40	39	126	117	13
50	154	40	11	10	738 513 710	0.334	110	169	44	46	135	123	15
63	172	50	11	10	738 513 711	0.522	125	190	48	58	152	132	21
75	210	65	11	10	738 513 712	0.996	140	211	55	62	170	149	18
90	233	80	11	10	738 513 713	1.336	160	215	62	69	167	146	18
110	263	100	11	10	738 513 714	1.900	180	235	72	72	177	163	11



COOL-FIT 4.0 Union PE/PE

Model:

- Union bush: Spigot fitting PE100 SDR11, metric with free end
- Union End: Spigot fitting PE100 SDR11, metric with free end
- Gasket: O-ring EPDM Nr. 748 410 008-014
- Union Nut: PEGF25
- Including insulation half shells

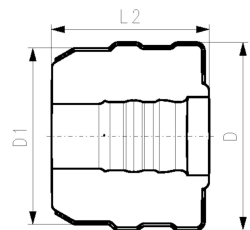
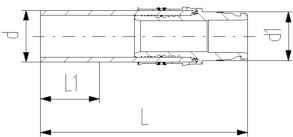


d (mm)	D (mm)	DN (mm)	SDR	PN (bar)	Code	Weight (kg)	D1 (mm)	L (mm)	L1 (mm)	L2 (mm)	z1 (mm)	z2 (mm)
32	139	25	11	16	738 513 608	0.223	90	211	36	139	107	104
40	153	32	11	16	738 513 609	0.363	110	234	40	158	118	116
50	165	40	11	16	738 513 610	0.468	110	247	44	163	124	123
63	185	50	11	16	738 513 611	0.584	125	268	48	176	136	132

COOL-FIT 4.0 Adaptor fitting PE/iFIT

Model:

- Spigot fitting PE100 SDR11, metric with free end
- iFIT module stainless steel 1.4404 / 316L
- Including insulation half shells



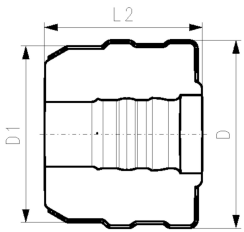
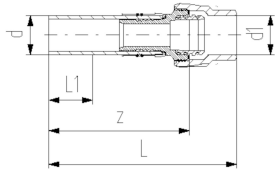
d (mm)	D (mm)	DN (mm)	SDR	PN (bar)	Code	Weight (kg)	d1 (mm)	D1 (mm)	L (mm)	L1 (mm)	L2 (mm)
32	103	25	11	10	738 943 108	0.256	25-32	90	132	36	80



COOL-FIT 4.0 Adaptor fitting PE/Sanipex MT

Model:

- Spigot fitting PE100 SDR11, metric with free end
- Sanipex MT adaptor brass CuZn40Pb2
- Including insulation half shells



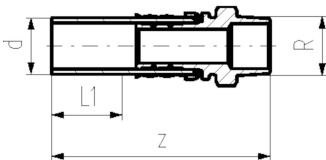
d	D	DN	SDR	PN	Code	Weight	d1	D1	L	L1	L2	z
(mm)	(mm)	(mm)		(bar)		(kg)	(mm)	(mm)	(mm)	(mm)	(mm)	(mm)
32	103	25	11	10	738 953 118	0.476	32	90	174	36	101	135



COOL-FIT 2.0/4.0 Adaptor fitting PE/stainless steel With male thread R

Model:

- Spigot fitting PE100 SDR11, metric with free end
- Stainless steel 1.4404 / 316L with male thread R
- Gasket: O-ring EPDM



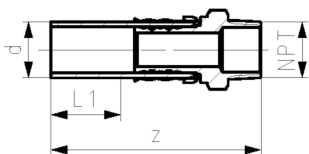
d	Thread	Size	DN	SDR	PN	Code	Weight	L1	z
(mm)		(inch)	(mm)		(bar)		(kg)	(mm)	(mm)
32	R	½	25	11	16	738 940 508	0.179	36	130
32	R	¾	25	11	16	738 940 518	0.187	36	134
32	R	1	25	11	16	738 940 528	0.196	36	134
40	R	1 ¼	32	11	16	738 940 509	0.572	40	156
50	R	1 ½	40	11	16	738 940 510	0.927	44	168
63	R	2	50	11	16	738 940 511	1.347	48	179



COOL-FIT 2.0/4.0 Adaptor fitting PE/stainless steel With male thread NPT

Model:

- Spigot fitting PE100 SDR11, ANSI with free end
- Stainless steel 1.4404 / 316L with male thread NPT
- Gasket: O-ring EPDM



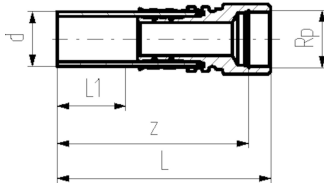
d	Thread	Size	DN	SDR	PN	Code	Weight	L	L1	z
(mm)		(inch)	(mm)		(bar)		(kg)	(mm)	(mm)	(mm)
32	NPT	½	25	11	16	738 940 808	0.179	132	36	118
32	NPT	¾	25	11	16	738 940 818	0.187	132	36	116
32	NPT	1	25	11	16	738 940 828	0.196	132	36	115
40	NPT	1 ¼	32	11	16	738 940 809	0.572	157	40	141
50	NPT	1 ½	40	11	16	738 940 810	0.927	150	44	128
63	NPT	2	50	11	16	738 940 811	1.347	164	48	140

**COOL-FIT 2.0/4.0 Adaptor fitting PE/stainless steel
With female thread Rp**



Model:

- Spigot fitting PE100 SDR11, metric with free end
- Stainless steel 1.4404 / 316L with female thread Rp
- Gasket: O-ring EPDM



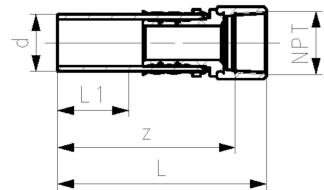
d (mm)	Thread Rp	Size (inch)	DN (mm)	SDR	PN (bar)	Code	Weight (kg)	L (mm)	L1 (mm)	z (mm)
32	Rp	½	25	11	16	738 940 008	0.183	132	36	118
32	Rp	¾	25	11	16	738 940 018	0.208	132	36	116
32	Rp	1	25	11	16	738 940 028	0.233	132	36	115
40	Rp	1 ¼	32	11	16	738 940 009	0.600	157	40	141
50	Rp	1 ½	40	11	16	738 940 010	0.641	150	44	128
63	Rp	2	50	11	16	738 940 011	1.133	164	48	140

**COOL-FIT 2.0/4.0 Adaptor fitting PE/stainless steel
With female thread NPT**



Model:

- Spigot fitting PE100 SDR11, ANSI with free end
- Stainless steel 1.4404 / 316L with female thread NPT
- Gasket: O-ring EPDM



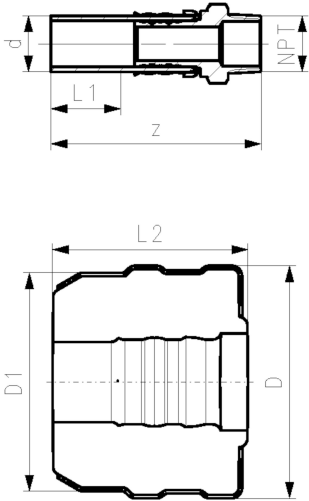
d (mm)	Thread NPT	Size (inch)	DN (mm)	SDR	PN (bar)	Code	Weight (kg)	L (mm)	L1 (mm)	z (mm)
32	NPT	½	25	11	16	738 940 408	0.183	132	36	114
32	NPT	¾	25	11	16	738 940 418	0.208	132	36	114
32	NPT	1	25	11	16	738 940 428	0.233	132	36	114
40	NPT	1 ¼	32	11	16	738 940 409	0.600	147	40	125
50	NPT	1 ½	40	11	16	738 940 410	0.641	147	44	124
63	NPT	2	50	11	16	738 940 411	1.133	159	48	136



COOL-FIT 4.0 Adaptor fitting
PE/stainless steel
with male thread NPT

Model:

- Spigot fitting PE100 SDR11, ANSI with free end
- Stainless steel 1.4404 / 316L with male thread NPT
- Gasket: O-ring EPDM
- Including insulation half shells



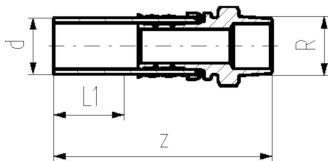
d	D	Thread	Size	DN	SDR	PN	Code	Weight	D1	L1	L2	z
(mm)	(mm)		(inch)	(mm)		(bar)		(kg)	(mm)	(mm)	(mm)	(mm)
32	103	NPT	½	25	11	16	738 943 808	0.224	90	36	80	129
32	103	NPT	¾	25	11	16	738 943 818	0.232	90	36	80	133
32	103	NPT	1	25	11	16	738 943 828	0.241	90	36	80	134
40	128	NPT	1 ¼	32	11	16	738 943 809	0.655	110	40	91	151
50	138	NPT	1 ½	40	11	16	738 943 810	1.021	110	44	96	163
63	149	NPT	2	50	11	16	738 943 811	1.459	125	48	103	174

COOL-FIT 2.0/4.0 Adaptor fitting PE/brass
With male thread R



Model:

- Spigot fitting PE100 SDR11, metric with free end
- Brass CuZn40Pb2 with male thread R
- Gasket: O-ring EPDM



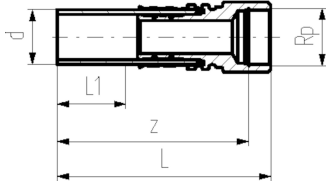
d	Thread	Size	DN	SDR	PN	Code	Weight	L1	z
(mm)		(inch)	(mm)		(bar)		(kg)	(mm)	(mm)
32	R	½	25	11	16	738 950 508	0.188	36	130
32	R	¾	25	11	16	738 950 518	0.196	36	134
32	R	1	25	11	16	738 950 528	0.206	36	134
40	R	1 ¼	32	11	16	738 950 519	0.608	40	156
50	R	1 ½	40	11	16	738 950 510	0.986	44	168
63	R	2	50	11	16	738 950 511	1.433	48	179

**COOL-FIT 2.0/4.0 Adaptor fitting PE/brass
With female thread Rp**



Model:

- Spigot fitting PE100 SDR11, metric with free end
- Brass CuZn40Pb2 with female tread Rp
- Gasket: O-ring EPDM



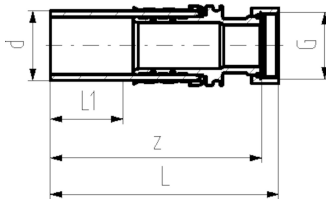
d (mm)	Thread	Size (inch)	DN (mm)	SDR	PN (bar)	Code	Weight (kg)	L (mm)	L1 (mm)	z (mm)
32	Rp	½	25	11	16	738 950 008	0.192	132	36	118
32	Rp	¾	25	11	16	738 950 018	0.219	132	36	116
32	Rp	1	25	11	16	738 950 028	0.246	132	36	115
40	Rp	1 ¼	32	11	16	738 950 019	0.641	157	40	141
50	Rp	1 ½	40	11	16	738 950 010	0.684	150	44	128
63	Rp	2	50	11	16	738 950 011	1.209	164	48	140

**COOL-FIT 2.0/4.0 Adaptor fitting PE/brass
With loose union nut G**



Model:

- Spigot fitting PE100 SDR11, metric with free end
- Brass CuZn40Pb2 with loose union nut G
- Including flat seal EPDM



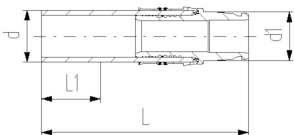
d (mm)	Thread	Size (inch)	DN (mm)	SDR	PN (bar)	Code	Weight (kg)	L (mm)	L1 (mm)	z (mm)
32	G	¾	25	11	16	738 950 318	0.206	135	36	129
32	G	1	25	11	16	738 950 328	0.244	135	36	129
32	G	1 ¼	25	11	16	738 950 338	0.301	137	36	131
40	G	1 ¼	32	11	16	738 950 309	0.543	155	40	148
40	G	1 ½	32	11	16	738 950 319	0.607	157	40	148
50	G	1 ½	40	11	16	738 950 310	0.769	164	44	154
63	G	2	50	11	16	738 950 311	1.268	186	48	170

COOL-FIT 2.0/4.0 Adaptor Fitting PE/iFIT



Model:

- Spigot fitting PE100 SDR11, metric with free end
- iFIT module stainless steel 1.4404 / 316L



d (mm)	DN (mm)	SDR	PN (bar)	Code	Weight (kg)	L (mm)	L1 (mm)	L2 (mm)
32	25	11	10	738 940 108	0.211	132	36	80

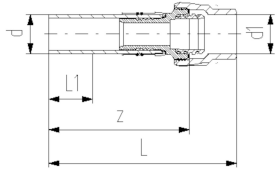
COOL-FIT 2.0/4.0 Adaptor fitting PE/Sanipex MT



Model:

- Spigot fitting PE100 SDR11, metric with free end
- Sanipex MT adaptor brass CuZn40Pb2

d	DN	SDR	PN	Code	Weight	d1	L	L1	L2	z
(mm)	(mm)		(bar)		(kg)	(mm)	(mm)	(mm)	(mm)	(mm)
32	25	11	10	738 950 118	0.412	32	174	36	101	135



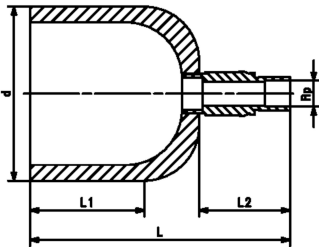
COOL-FIT 2.0/4.0 Transition cap PE/brass With female thread Rp

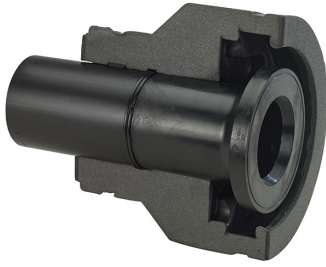


Model:

- Spigot fitting PE100 SDR11, metric with free end
- Brass CuZn40Pb2 with female tread Rp
- Gasket: O-ring EPDM

d	Thread	Size	DN	SDR	PN	Code	Weight	L	L1	L2
(mm)		(inch)	(mm)		(bar)		(kg)	(mm)	(mm)	(mm)
32	Rp	½	25	11	16	738 960 008	0.200	107	36	69
40	Rp	½	32	11	16	738 960 009	0.210	113	40	73
50	Rp	½	40	11	16	738 960 010	0.250	117	44	73
63	Rp	½	50	11	16	738 960 011	0.300	121	48	73
75	Rp	½	65	11	16	738 960 012	0.400	128	55	73
90	Rp	½	80	11	16	738 960 013	0.476	135	62	73
110	Rp	½	100	11	16	738 960 014	0.695	145	72	73
140	Rp	½	125	11	16	738 960 016	0.954	209	84	73
160	Rp	½	150	11	16	738 960 017	1.300	193	90	73
225	Rp	½	200	11	16	738 960 020	2.532	221	110	73





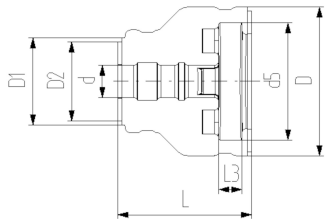
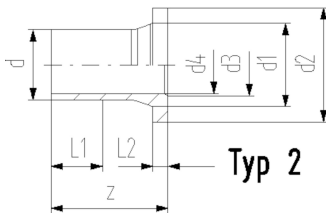
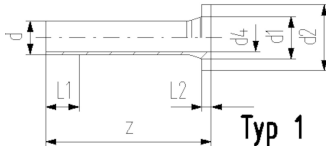
COOL-FIT 2.0/4.0 Flange adaptor

Model:

- PE100 SDR11, metric
- Suitable for flange connections to metric and/or ANSI/ASME B16.5
- Gasket: Profile flange gasket NBR No. 45 44 07, EPDM No. 48 44 07
- Type 1 without chamfer, Type 2 with chamfer
- Separate Fittings type A needed for joining

Note:

Backing ring and gasket not included

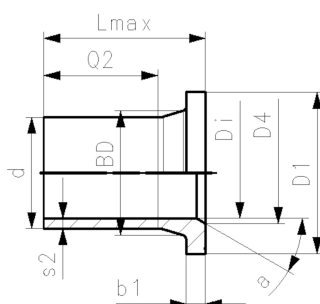
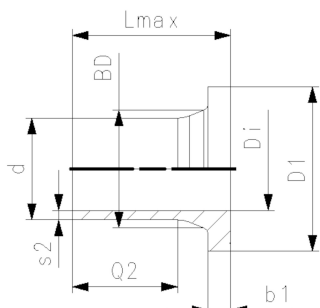


d (mm)	DN (mm)	SDR	PN	Code	Weight (kg)
32	25	11	16	738 710 008	0.320
32	25	11	16	738 710 108	0.320
40	32	11	16	738 710 009	0.480
40	32	11	16	738 710 109	0.480
50	40	11	16	738 710 010	0.620
50	40	11	16	738 710 110	0.620
63	50	11	16	738 710 011	0.910
75	65	11	16	738 710 012	1.220
90	80	11	16	738 710 013	1.650
90	80	11	16	738 710 113	1.650
110	100	11	16	738 710 014	2.390
140	125	11	16	738 710 016	3.660
160	150	11	16	738 710 017	4.800
225	200	11	16	738 710 020	9.600

d (mm)	D (mm)	d1 (mm)	D1 (mm)	d2 (mm)	D2 (mm)	d3 (mm)	d4 (mm)	d5 (mm)	L (mm)	L1 (mm)	L2 (mm)	L3 (mm)	Standard	Type
32	135	40	90	68			26	121	162	36	10	26	Metric	1
32	135	40	90	63	63		26	121	162	36	10	26	ANSI	1
40	170	50	110	78	90		32	146	165	40	11	28	Metric	1
40	170	50	110	73	73		32	146	165	40	11	28	ANSI	1
50	180	61	110	88	90		40	156	178	44	12	30	Metric	1
50	180	61	110	82	82		40	156	178	44	12	30	ANSI	1
63	200	75	125	102	110		51	171	230	48	14	32	Metric, ANSI	1
75	220	89	140	122	125		61	191	232	55	16	34	Metric, ANSI	2
90	240	105	160	138	140	78	73	206	245	62	17	35	Metric	2
90	240	105	160	133	133	78	73	206	245	62	17	35	ANSI	2
110	270	125	180	158	160	100	90	235	254	72	18	36	Metric, ANSI	2
140	300	155	225	188	200	127	127	256	299	84	25	38	Metric, ANSI	2
160	358	174	259	213	213	151	131	295	332	90	25	34	Metric, ANSI	2
225	423	233	325	268	268	209	184	354	383	110	32	37	Metric, ANSI	2

d (mm)	z (mm)
32	190
32	190
40	197
40	197
50	214
50	214
63	270
75	279
90	299
90	299
110	320
140	383
160	412
225	483

ELGEF Plus Flange adaptor PE100
d50-1000mm / SDR17 / Long version / Combined jointing face: flat and serrated



Model:

- For IR, butt and electrofusion welding according to DVS 2207
- Type A: without chamfer
- Type B: with chamfer
- Type 567/578 suitable for plastic butterfly valves up to DN300
- Type 565 for DN 300, the ecoFIT special flange adapter ** SDR17 is required
- Type 038/039/044/065 for metal butterfly valves up to DN250 suitable
- Type 038/039/044/065 for metal butterfly valves DN 300; the ecoFIT special flange adapter ** SDR17 is required
- For Butterfly Valves above DN 450, the ecoFIT adapters for BV SDR17 are required
- For third-party products, please check the Insertion depth of the disc dimension
- Profile seal d50-d1000: NBR, EPDM, FKM
- Flat gasket d50-d315: EPDM, FKM
- Pressure rating: 10 bar water / 5 bar gas
- Please refer to the Online Tool: Perfect Flange Connection - GF Piping Systems (gfps.com)

* Machined

d	Di	Type	DN	Code	Weight	Lmax	D1	D4	Q2	s2	b1	BD
(mm)	(mm)		(mm)		(kg)	(mm)	(mm)	(mm)	(mm)	(mm)	(mm)	(mm)
50	44	A	40	753 800 085	0.107	90	88		62	3.0	12	61
63	55	A	50	753 800 086	0.168	106	102		70	3.8	14	75
75	66	A	65	753 800 087	0.260	130	122		75	4.5	16	89
90	79	A	80	753 800 088	0.367	140	138		103	5.4	17	105
110	96	A	100	753 800 089	0.571	160	158		117	6.6	18	125
125	110	B	100	753 800 090	0.684	170	158	114	125	7.4	25	132
140	123	B	125	753 800 091	1.035	200	188	127	147	8.3	25	155
160	141	B	150	753 800 092	1.342	200	212	151	147	9.5	25	175
180	158	A	150	753 800 093	1.469	200	212		170	10.7	30	180
200	176	B	200	753 800 094	2.212	200	268	203	128	11.9	32	232
225	198	B	200	753 800 095	2.456	200	268	210	138	13.4	32	235
250	220	B	250	753 800 096	3.500	220	320	245	148	14.8	35	285
280	246	B	250	753 800 097	3.780	230	320	265	154	16.6	35	291
315	277	B	300	753 800 098	5.470	242	370	300	166	18.7	36	335
355	310	B	350	753 800 299	7.100	260	430	346	170	21.1	33	373
400	350	B	400	753 800 300	9.600	282	482	395	185	23.7	36	427
450	400	A	500	753 800 301	16.400	316	585		205	26.7	46	514
500	400	A	500	753 800 302	18.500	337	585		220	29.7	46	530
560	493	A	600	753 800 303	26.940	370	685		250	33.2	50	616
630	555	A	600	753 800 304	44.260	390	685		270	37.4	50	644
*	710	626	A	700	753 800 105	39.400	425	800	325	42.1	50	737
*	800	705	A	800	753 800 106	50.800	465	905	360	47.4	52	840
*	900	793	A	900	753 800 107	64.300	490	1005	360	53.3	55	944
*	1000	881	A	1000	753 800 108	79.500	530	1110	395	59.3	60	1047



Flanges PP-Steel

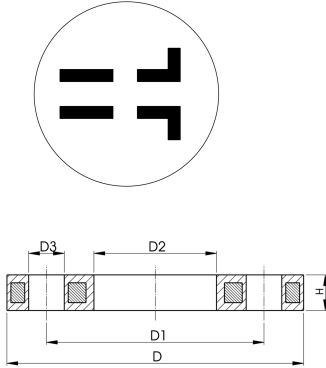
Model:

- Material: PP (30% glass-fibre reinforced) with steel ring
- Metric: ISO 7005, EN 1092, ISO 9624
- ASME: ANSI/ASME B 16.5 class 150, ASTM D4024, BS 1560, BS EN 1759
- Special flange adapter ANSI for d25 - d50 and d90 required

AL: number of holes

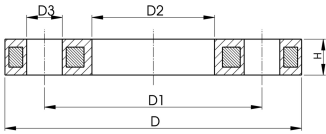
¹⁾ FM 1613 approved – 15 bar

²⁾ Profiled loose flange



	d (mm)	DN (mm)	D (mm)	PN (bar)	Standard	Bolt / circle	Design	Code	Weight (kg)
	20	15	95	16	Metric	PN10	Butt/Socket	727 700 206	0.216
	20	15	95	16	ASME	class 150	Butt/Socket	727 701 206	0.213
	25	20	105	16	Metric	PN10	Butt/Socket	727 700 207	0.279
	25	20	105	16	ASME	class 150	Butt/Socket	727 701 207	0.260
	32	25	115	16	Metric	PN10	Butt/Socket	727 700 208	0.429
	32	25	115	16	ASME	class 150	Butt/Socket	727 701 208	0.416
	40	32	140	16	Metric	PN10	Butt/Socket	727 700 209	0.621
	40	32	140	16	ASME	class 150	Butt/Socket	727 701 209	0.730
	50	40	150	16	Metric	PN10	Butt/Socket	727 700 210	0.722
	50	40	150	16	ASME	class 150	Butt/Socket	727 701 210	0.809
	63	50	165	16	Metric	PN10	Butt/Socket	727 700 211	0.900
	63	50	165	16	ASME	class 150	Butt/Socket	727 701 211	0.866
	75	65	185	16	Metric	PN10	Butt/Socket	727 700 212	1.110
	75	65	185	16	ASME	class 150	Butt/Socket	727 701 212	1.117
1	90	80	200	16	Metric	PN10	Butt	724 700 313	1.390
	90	80	200	16	Metric	PN10	Socket	727 700 213	1.369
	90	80	200	16	Metric	PN10	Butt	727 700 313	1.390
	90	80	200	16	ASME	class 150	Socket	727 701 213	1.492
	90	80	200	16	ASME	class 150	Butt	727 701 313	1.499
1	110	100	223	16	Metric	PN10	Butt	724 700 314	1.407
	110	100	220	16	Metric	PN10	Socket	727 700 214	1.522
	110	100	220	16	Metric	PN10	Butt	727 700 314	1.407
	110	100	229	16	ASME	class 150	Socket	727 701 214	1.695
	110	100	229	16	ASME	class 150	Butt	727 701 314	1.739
1	125	100	223	16	Metric	PN10	Butt	724 700 315	1.408
	125	100	220	16	Metric	PN10	Butt	727 700 315	1.408
	125	125	250	16	Metric	PN10	Socket	727 700 815	2.475
1	140	125	250	16	Metric	PN10	Butt	724 700 316	2.300
	140	125	250	16	Metric	PN10	Butt	727 700 716	2.318
	140	125	250	16	Metric	PN10	Socket	727 700 816	2.033
1	160	150	285	16	Metric	PN10	Butt	724 700 317	3.500
	160	150	285	16	Metric/ASME	PN10/ class 150	Butt	727 700 717	3.491
	160	150	285	16	Metric/ASME	PN10/ class 150	Socket	727 700 817	3.167
1	180	150	285	16	Metric	PN10	Butt	724 700 318	3.100
	180	150	285	16	Metric/ASME	PN10/ Class 150	Butt	727 700 718	3.108
1, 2	200	200	344	16	Metric	PN16	Butt	724 700 319	3.549
	200	200	340	16	Metric/ASME	PN10/ class 150	Butt	727 700 719	5.600
	200	200	340	16	Metric/ASME	PN10/ class 150	Socket	727 700 819	6.143
1, 2	225	200	344	16	Metric	PN16	Butt	724 700 320	3.380
	225	200	340	16	Metric/ASME	PN10/ class 150	Butt	727 700 720	5.533
	225	200	340	16	Metric/ASME	PN10/ class 150	Socket	727 700 820	4.448
1, 2	250	250	410	16	Metric	PN16	Butt	724 700 321	6.390
	250	225	395	16	Metric	PN10	Socket	727 700 031	8.340
	250	250	406	10	ASME	class 150	Butt	727 701 321	6.000
	250	250	395	16	Metric	PN10	Butt	727 700 721	6.632
	250	250	395	16	Metric	PN10	Socket	727 700 821	7.179
1, 2	280	250	410	16	Metric	PN16	Butt	724 700 322	6.310
	280	250	395	16	Metric	PN10	Butt	727 700 722	6.573

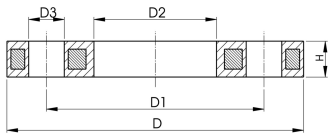
table continued on the next page



	d (mm)	DN (mm)	D (mm)	PN (bar)	Standard	Bolt / circle	Design	Code	Weight (kg)
	280	250	395	16	Metric	PN10	Socket	727 700 822	5.547
1, 2	315	300	455	16	Metric	PN16	Butt	724 700 323	9.740
	315	300	445	16	Metric	PN10	Butt	727 700 723	7.903
	315	300	445	16	Metric	PN10	Socket	727 700 823	6.980
	315	300	483	10	ASME	class 150	Butt	727 701 322	11.800
1, 2	355	350	521	16	Metric	PN16	Butt	724 700 324	15.203
	355	350	515	16	Metric	PN10	Butt	727 700 724	14.587
	355	350	515	16	Metric	PN10	Socket	727 700 824	12.465
	355	350	540	10	ASME	class 150	Butt	727 701 323	17.900
1, 2	400	400	582	16	Metric	PN16	Butt	724 700 325	20.600
	400	400	574	16	Metric	PN10	Butt	727 700 725	20.034
	400	400	574	16	Metric	PN10	Socket	727 700 825	17.607
	400	400	597	10	ASME	class 150	Butt	727 701 324	24.500
1, 2	450	500	685	10	Metric	PN10	Butt	724 700 426	25.600
1, 2	500	500	685	10	Metric	PN10	Butt	724 700 427	21.061
2	560	600	796	10	Metric	PN10	Butt	724 700 428	35.000
2	630	600	800	10	Metric	PN10	Butt	724 700 429	28.500
2	710	700	912	6	Metric	PN10	Butt	724 700 430	25.500
2	800	800	1026	6	Metric	PN10	Butt	724 700 431	39.300
2	900	900	1129	6	Metric	PN10	Butt	724 700 432	48.500
	450	500	712	10	ASME	class 150	Butt	727 701 325	33.600

	d (mm)	D1 (mm)	D2 (mm)	D3 (mm)	H max. (mm)	AL	SC
	20	65	28	14	12	4	M12
	20	60	28	16	12	4	M12
	25	75	34	14	12	4	M12
	25	70	34	16	12	4	M12
	32	85	42	14	16	4	M12
	32	79	42	16	16	4	M12
	40	100	51	18	16	4	M16
	40	89	51	16	16	4	M16
	50	110	62	18	20	4	M16
	50	98	62	16	18	4	M16
	63	125	78	18	20	4	M16
	63	121	78	19	18	4	M16
	75	145	92	18	20	4	M16
	75	140	92	19	18	4	M16
1	90	160	108	18	20	8	M16
	90	160	110	18	20	8	M16
	90	160	108	18	20	8	M16
	90	152	110	19	20	4	M16
	90	152	108	19	20	4	M16
1	110	180	128	18	20	8	M16
	110	180	133	18	20	8	M16
	110	180	128	18	20	8	M16
	110	190	133	19	20	8	M16
	110	190	128	19	20	8	M16
1	125	180	135	18	20	8	M16
	125	180	135	18	20	8	M16
	125	210	150	18	26	8	M16
1	140	210	158	18	24	8	M16
	140	210	158	18	24	8	M16
	140	210	167	18	26	8	M16
1	160	240	178	22	28	8	M20
	160	240	178	22	24	8	M20
	160	240	190	22	26	8	M20
1	180	240	188	22	28	8	M20
	180	240	188	22	24	8	M20
1, 2	200	295	235	22	31	12	M20
	200	295	235	22	27	8	M20
	200	295	226	22	29	8	M20
1, 2	225	295	238	22	31	12	M20

table continued on the next page



	d (mm)	D1 (mm)	D2 (mm)	D3 (mm)	H max. (mm)	AL	SC
	225	295	238	22	27	8	M20
	225	295	250	22	29	8	M20
1, 2	250	355	288	26	35	12	M24
	250	325	277	22	32	8	M20
	250	362	293	25	30	12	M24
	250	350	288	22	30	12	M20
	250	350	277	22	32	12	M20
1, 2	280	355	294	26	36	12	M24
	280	350	294	22	30	12	M20
	280	350	310	22	32	12	M20
1, 2	315	410	338	26	43	12	M24
	315	400	338	22	34	12	M20
	315	400	348	22	36	12	M20
	315	432	338	25	34	12	M24
1, 2	355	470	376	26	55	16	M24
	355	460	376	23	40	16	M20
	355	460	388	23	42	16	M20
	355	476	376	29	42	12	M27
1, 2	400	525	430	30	56	16	M27
	400	515	430	26	40	16	M24
	400	515	442	26	42	16	M24
	400	539	429	29	44	16	M27
1, 2	450	620	517	26	56	20	M24
1, 2	500	620	533	26	56	20	M24
2	560	725	618	30	68	20	M27
2	630	725	645	30	68	20	M27
2	710	840	740	30	49	24	M27
2	800	950	843	33	58	24	M30
2	900	1050	947	33	62	28	M30
	450	635	540	32	53	20	M30



Profiled Backing Flanges Metal, Epoxy coated

Model:

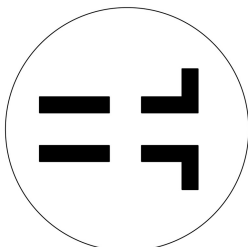
- Ductile iron (GGG 40), stoved epoxy (black, DIN30677)
- Metric: ISO 7005, EN 1092, ISO 9624

Note:

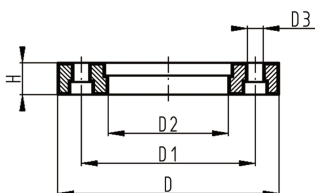
Flat side = bolt / washer side

Profiled side = flange adaptor side (aligned with collar)

AL: number of holes

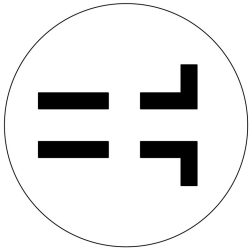


d (mm)	DN (mm)	PN (bar)	Standard	Bolt / circle	Design	Code	Weight (kg)
125	125	16	Metric	PN10	Butt	701 474 386	6.000
450	450	10	Metric	PN10	Butt	724 705 026	38.000
450	500	10	Metric	PN16	Butt	724 705 326	50.500
500	500	10	Metric	PN16	Butt	724 705 327	50.500
560	600	10	Metric	PN16	Butt	724 705 328	50.500
630	600	10	Metric	PN16	Butt	724 705 329	50.500
710	700	6	Metric	PN10	Butt	724 705 130	36.400
800	800	6	Metric	PN10	Butt	724 705 131	50.500
900	900	6	Metric	PN10	Butt	724 705 132	55.800
1000	1000	6	Metric	PN10	Butt	724 705 133	71.100
1200	1200	6	Metric	PN10	Butt	724 705 134	101.000

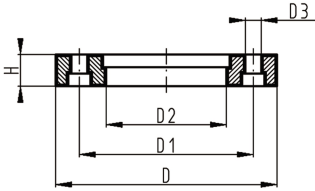


d (mm)	DN (mm)	D (mm)	D1 (mm)	D2 (mm)	D3 (mm)	H (mm)	AL	SC
125	125	250	210	135	18	25	8	M16
450	450	615	565	470	26	36	20	M24
450	500	715	650	517	33	46	20	M30

table continued on the next page



d	DN	D	D1	D2	D3	H	AL	SC
(mm)	(mm)	(mm)	(mm)	(mm)	(mm)	(mm)		
500	500	715	650	533	33	46	20	M30
560	600	840	770	618	36	55	20	M33
630	600	840	770	645	36	55	20	M33
710	700	900	840	740	30	45	24	M27
800	800	1015	950	843	33	53	24	M30
900	900	1115	1050	947	33	56	28	M30
1000	1000	1230	1160	1050	36	62	28	M33
1200	1200	1455	1380	1260	39	68	32	M36



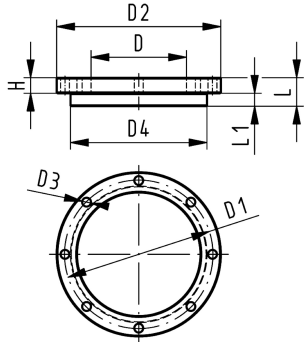
Blanking flange set PE100 Combined jointing face flat and serrated metric

Model:

- d63 - d315: backing flange PP-V with end blank PE
- d355 - d630: backing flange PP/Steel with end blank PE
- Connecting dimensions: ISO 7005, EN 1092, DIN 2501
- **Bolt circle PN 10**

AL: number of holes

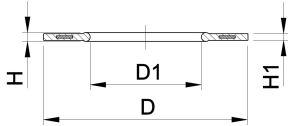
L: length of the End Blank



d	DN	PN	Code	Weight	D	D1	D2	D3	D4	L	L1	H	AL	SC
(mm)	(mm)	(bar)		(kg)	(mm)	(mm)	(mm)	(mm)	(mm)	(mm)	(mm)	(mm)		
63	50	16	753 700 611	0.560	75	125	165	18	102	30	14	24	4	M16
75	65	16	753 700 612	0.910	89	145	185	18	122	30	16	26	4	M16
90	80	16	753 700 613	0.921	105	160	200	18	138	30	17	27	8	M16
110	100	16	753 700 614	1.158	125	180	220	18	158	30	18	28	8	M16
125	100	16	753 700 615	1.678	132	180	220	18	158	35	25	28	8	M16
140	125	16	753 700 616	1.913	155	210	250	18	188	40	25	30	8	M16
160	150	16	753 700 617	2.373	175	240	285	22	212	40	25	32	8	M20
180	150	16	753 700 618	2.430	180	240	285	22	212	45	30	32	8	M20
200	200	16	753 700 619	3.495	232	295	340	22	268	50	32	34	8	M20
225	200	16	753 700 620	3.744	235	295	340	22	268	50	32	34	8	M20
250	250	16	753 700 621	6.051	285	350	395	22	320	55	35	38	12	M20
280	250	16	753 700 622	6.305	291	350	395	22	320	60	35	38	12	M20
315	300	16	753 700 623	8.894	335	400	445	22	370	65	35	42	12	M20
355	350	16	753 700 624	23.198	373	460	515	22	430	70	40	40	16	M20
400	400	16	753 700 625	30.766	427	515	574	26	482	75	46	40	16	M24
450	500	10	753 700 626	44.271	510	620	684	26	585	80	60	49	20	M24
500	500	10	753 700 627	47.165	530	620	684	26	585	90	60	49	20	M24
560	600	10	753 700 628	67.147	615	725	796	30	685	100	60	58	20	M27
630	600	10	753 700 629	68.574	642	725	796	30	685	110	60	68	20	M27



Design d710 - d1000



Profile Flange Gasket EPDM/FKM metric

Model:

- For all metric GF Flange Adaptors
- Hardness: 70° Shore EPDM, 75° Shore FKM
- EPDM: approved acc. to DVGW Water W 270, KTW recommendation
- Centering on the inner diameter of the screw crown
- material steel insert: carbon steel
- Rubber-steel body combined with rubber profile cord ring up to d630
- Rubber-steel body ideal for big dimensions (d710 - d1000)

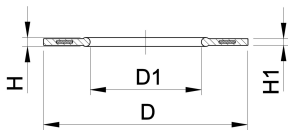
di FA are the suitable inner diameters of flanges adaptors

d (mm)	DN (mm)	PN (bar)	EPDM Code	FKM Code	Weight (kg)	D (mm)	D1 (mm)	di FA (mm)	H (mm)	H1 (mm)
16	10	16	748 440 705	749 440 705	0.012	46	16	6 - 16	4	3
20	15	16	748 440 706	749 440 706	0.013	51	20	10 - 20	4	3
25	20	16	748 440 707	749 440 707	0.014	61	22	12 - 22	4	3
32	25	16	748 440 708	749 440 708	0.019	71	28	18 - 28	4	3
40	32	16	748 440 709	749 440 709	0.026	82	40	30 - 40	4	3
50	40	16	748 440 710	749 440 710	0.039	92	46	36 - 46	4	3
63	50	16	748 440 711	749 440 711	0.050	107	58	48 - 58	5	4
75	65	16	748 440 712	749 440 712	0.082	127	69	59 - 69	5	4
90	80	16	748 440 713	749 440 713	0.083	142	84	73 - 84	5	4
110	100	16	748 440 714	749 440 714	0.127	162	104	94 - 104	6	5
125	100	16	748 440 715	749 440 715	0.105	162	123	113 - 123	6	5
140	125	16	748 440 716	749 440 716	0.173	192	137	127 - 137	6	5
160 - 180	150	16	748 440 717	749 440 717	0.207	218	160	150 - 160	8	6
200	200	16	748 440 719	749 440 719	0.263	273	203	192 - 203	8	6
225	200	16	748 440 720	749 440 720	0.255	273	220	207 - 220	8	6
250	250	16	748 440 721	749 440 721	0.462	328	252	238 - 252	8	6
280	250	16	748 440 722	749 440 722	0.323	328	274	264 - 274	8	6
315	300	16	748 440 723	749 440 723	0.549	378	306	296 - 306	8	6
355	350	16	748 440 724	749 440 724	0.870	438	355	340 - 355	10	7
400	400	16	748 440 725	749 440 725	1.088	489	400	385 - 400	10	7
450	500	10	748 440 726	749 440 726	0.718	594	403	393 - 403	10	7
500	500	10	748 440 727	749 440 727	0.718	594	447	437 - 447	10	7
560	600	10	748 440 728	749 440 728	0.923	695	494	484 - 494	10	7
630	600	10	748 440 729	749 440 729	0.923	695	555	545 - 555	10	7
710	700	6	748 440 730		0.890	810	712	562 - 712	6	3
800	800	6	748 440 731		1.340	917	813	663 - 813	6	3
900	900	6	748 440 732		1.170	1017	915	765 - 915	6	3
1000	1000	6	748 440 733		1.360	1124	1016	866 - 1016	6	3

Profile Flange Gasket EPDM/FKM ANSI/ASME

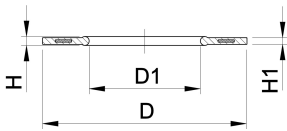
Model:

- Suitable for flanges adaptors PP/PE PVDF
- Hardness: 70° Shore EPDM, 75° Shore FKM
- Centered by the flange bolts
- Dimension D is in accordance with the inner diameter of the bolt circle



d (mm)	DN (mm)	EPDM Code	Weight (kg)	FKM Code	Weight (kg)	Inch	D (mm)	D1 (mm)	H (mm)	H1 (mm)
25	20	748 440 502	0.010	749 440 502	0.011	3/4	54	27	4	3
32	25	748 440 503	0.011	749 440 503	0.023	1	64	33	4	3
40	32	748 440 504	0.017	749 440 504	0.024	1 1/4	73	42	4	3
50	40	748 440 505	0.030	749 440 505	0.030	1 1/2	83	48	4	3
63	50	748 440 506	0.029	749 440 506	0.042	2	102	60	5	4
75	65	748 440 507	0.046	749 440 507	0.068	2 1/2	121	73	5	4
90	80	748 440 508	0.053	749 440 508	0.083	3	133	89	5	4
110	100	748 440 509	0.088	749 440 509	0.139	4	171	115	6	5
160 - 180	150	748 440 512	0.127	749 440 512	0.240	6	222	160	8	6

table continued on the next page



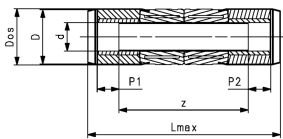
d (mm)	DN (mm)	EPDM Code	Weight (kg)	FKM Code	Weight (kg)	Inch (inch)	D (mm)	D1 (mm)	H (mm)	H1 (mm)
225	200	748 440 515	0.195	749 440 515	0.316	8	279	220	8	6
250	250	748 440 517	0.243	749 440 517	0.373	10	337	273	8	6
315	300	748 440 518	0.398	749 440 518	0.750	12	406	325	8	6
355	350	748 440 519	0.800	749 440 519	0.800	14	448	356	10	7
400	400	748 440 520	0.900	749 440 520	0.900	16	512	406	10	7
450	450	748 440 521	1.000	749 440 521	1.000	18	547	457	10	7
500	500	748 440 522	1.000	749 440 522	1.000	20	604	508	10	7



COOL-FIT 4.0 Sliding coupler kit

Model:

- Pre-insulated PE100 SDR11, metric
- Insulation made from GF HE foam
- Outer jacket impact resistant. Color: black
- Integrated sealing lip, for a moisture-proof and vapour tight sealing
- Including two couplers, pipe section and four insulation half shells



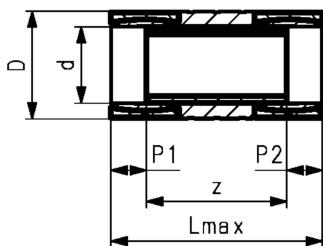
d (mm)	D (mm)	DN (mm)	SDR	PN (bar)	Code	Weight (kg)	Dos (mm)	Lmax (mm)	P1 (mm)	P2 (mm)	z (mm)
32	90	25	11	16	738 913 508	0.499	97	390	36.0	36	268
40	110	32	11	16	738 913 509	0.475	117	414	40.0	40	284
50	110	40	11	16	738 913 510	0.630	117	434	44.0	44	296
63	125	50	11	16	738 913 511	0.937	132	464	48.0	48	318
75	140	65	11	16	738 913 512	1.693	147	504	55.0	55	344
90	160	80	11	16	738 913 513	2.527	168	544	62.0	62	370
110	180	100	11	16	738 913 514	3.298	188	614	72.0	72	420
140	225	125	11	16	738 913 516	5.053	234	684	84.0	84	466
160	250	150	11	16	738 913 517	7.225	258	714	90.0	90	484
225	315	200	11	16	738 913 520	16.276	324	853	110.0	110	583



COOL-FIT 4.0 Sliding coupler kit

Model:

- Pre-insulated PE100 SDR11, metric
- Insulation made from GF HE foam
- Outer jacket impact resistant. Color: black
- Including two couplers, pipe section and insulation half shells



d (mm)	D (mm)	DN (mm)	SDR	PN (bar)	Code	Weight (kg)	Lmax (mm)	P1 (mm)	P2 (mm)	z (mm)
250	355	250	11	16	738 913 521	22.948	764	123.5	123.5	517
280	400	250	11	16	738 913 522	32.633	773	126.0	126.0	521
315	450	300	11	16	738 913 523	39.518	824	133.5	133.5	557

COOL-FIT 4.0 Weld-in Port



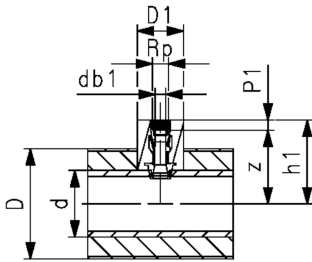
COOL-FIT 4.0 Weld-in port PE/Stainless steel With female thread Rp

Model:

- Material: PE100, Stainless steel V4A/ 316L
- With Weld-in port cone (PE100) and female thread Rp (stainless steel) for the installation of sensors, instruments, venting and draining
- Gasket: O-ring EPDM
- Including insulation made from EPDM foam

Note:

For pipes COOL-FIT 4.0 and COOL-FIT 4.0F of the dimensions d63-d225



Size (inch)	Thread	PN (bar)	Code	Weight (kg)	d (mm)	db1 (mm)	D1 (mm)	h1 (mm)	P1 (mm)	z (mm)
½	Rp	16	738 113 206	0.139	d63 - d225	11.8	78	85+d/2	15	70 + d/2
¾	Rp	16	738 113 207	0.179	d63 - d225	17.4	78	85+d/2	16	69 + d/2
1	Rp	16	738 113 208	0.240	d63 - d225	23.1	78	86+d/2	19	67 + d/2



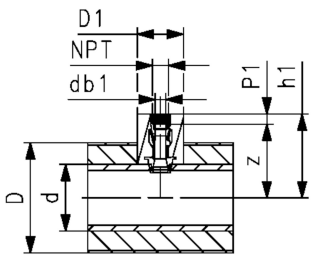
COOL-FIT 4.0 Weld-in port PE/Stainless steel With female thread NPT

Model:

- Material: PE100, Stainless steel V4A/ 316L
- With Weld-in port cone (PE100) and female thread NPT (stainless steel) for the installation of sensors, instruments, venting and draining
- Gasket: O-ring EPDM
- Including insulation made from EPDM foam

Note:

For pipes COOL-FIT 4.0 and COOL-FIT 4.0F of the dimensions d63-d225



Size (inch)	Thread	PN (bar)	Code	Weight (kg)	d (mm)	db1 (mm)	D1 (mm)	h1 (mm)	P1 (mm)	z (mm)
½	NPT	16	738 113 306	0.148	d63 - d225	11.8	78	85+d/2	15	70 + d/2
¾	NPT	16	738 113 307	0.191	d63 - d225	17.4	78	85+d/2	16	69 + d/2
1	NPT	16	738 113 308	0.248	d63 - d225	23.1	78	86+d/2	19	67 + d/2



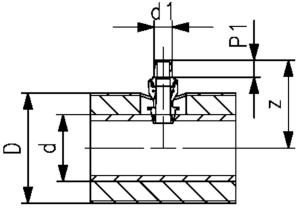
COOL-FIT 2.0/4.0 Weld-in port PE/iFIT

Model:

- Material: PE100, brass
- With Weld-in port cone (PE100) and iFIT module (brass) for the transition to COOL-FIT Push System or iFIT
- Gasket: O-ring EPDM

Note:

For pipes COOL-FIT 2.0, COOL-FIT 2.0F, COOL-FIT 4.0 and COOL-FIT 4.0F of the dimension d63-d225



d1 (mm)	PN (bar)	Code	Weight (kg)	d	P1	z
25/32	16	738 110 407	0.228	d63 - d225	28	92 + d/2



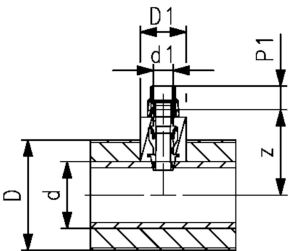
COOL-FIT 4.0 Weld-in port PE/Sanipex MT

Model:

- Material: PE100, brass with low lead content, dezincification resistant
- With Weld-in port cone (PE100) and Sanipex MT adaptor (brass) for the transition to Sanipex MT
- Gasket: O-ring EPDM
- Including insulation made from EPDM foam

Note:

For pipes COOL-FIT 4.0 and COOL-FIT 4.0F of the dimensions d63-d225



d1 (mm)	PN (bar)	Code	Weight (kg)	d	db1	D1	P1	z
32	16	738 113 508	0.245	d63 - d225	11.8	78	39	49 + d/2



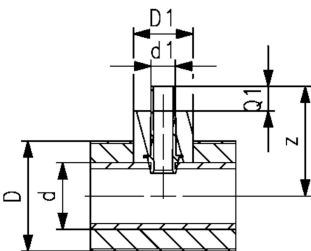
COOL-FIT 4.0 Weld-in port PE spigot

Model:

- Material: PE100
- With Weld-in port cone (PE100) and metric spigot SDR11 for transitions to COOL-FIT 4.0 fittings type A or PE Fittings
- Including insulation made from EPDM foam

Note:

For pipes COOL-FIT 4.0 and COOL-FIT 4.0F



d1 (mm)	SDR	PN (bar)	Code	Weight (kg)	d	D1	Q1	z
32	11	16	738 113 608	0.075	d63 - d225	78	36	125 + d/2
40	11	16	738 113 609	0.107	d75 - d225	85	40	131 + d/2
50	11	16	738 113 610	0.163	d90 - d225	110	44	140 + d/2

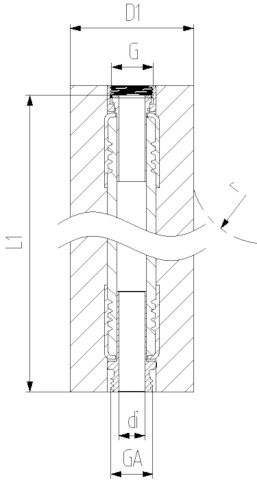
COOL-FIT 4.0 Flexible Hoses

COOL-FIT 4.0 Flex hose



Model:

- EPDM flexible hose with stainless steel protection
- Adaptors stainless steel 1.4404 / 316L
- Pre-Insulation made from EPDM foam with outer jacket impact resistant and tearproof
- With loose union nut G on one end and male thread GA on the other



d (mm)	D1 (mm)	Thread	Size (inch)	DN (mm)	PN (bar)	Code	L1 (mm)	di (mm)	r (mm)
20	72	G/GA	½	15	10	738 923 206	1000	15	119
25	82	G/GA	¾	20	10	738 923 207	1000	19	156
32	92	G/GA	1	25	10	738 923 208	1000	25	192
40	95	G/GA	1 ¼	32	8	738 923 209	1500	32	252
50	110	G/GA	1 ½	40	6	738 923 210	2000	38	312
63	123	G/GA	2	50	6	738 923 211	2000	52	372

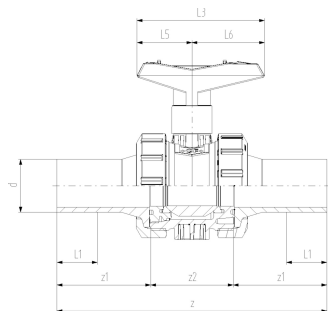
COOL-FIT 4.0 Valves



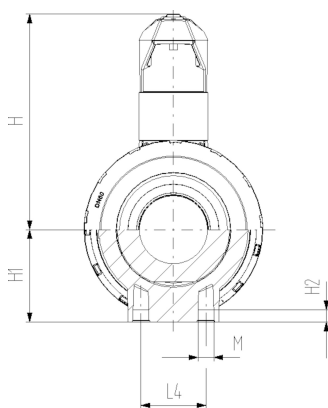
COOL-FIT 4.0 Ball valve type 546 Pro hand-operated

Model:

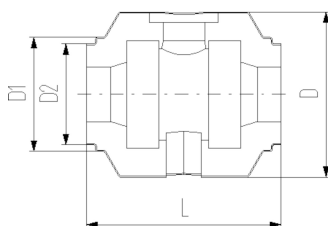
- Material: ABS with spigot PE100 SDR11, metric
- Ball seat PTFE
- Integrated stainless steel mounting inserts
- Including insulation half shells
- Separate Fittings type A needed for joining



d (mm)	DN (mm)	PN	kv-value ($\Delta p=1$ bar) (l/min)	SDR	EPDM Code	Weight (kg)
32	25	10	700	11	138 546 108	0.542
40	32	10	1000	11	138 546 109	0.887
50	40	10	1600	11	138 546 110	1.165
63	50	10	3100	11	138 546 111	2.100
75	65	10	5000	11	138 546 112	5.125
90	80	10	7000	11	138 546 113	7.173



d (mm)	D (mm)	D1 (mm)	D2 (mm)	L (mm)	L1 (mm)	L3 (mm)	H (mm)	H1 (mm)	H2 (mm)	z (mm)	z1 (mm)	z2 (mm)
32	135	97	82	152	36	97	98	36	12	223	76	76
40	157	117	97	170	40	128	119	44	15	249	82	82
50	169	117	97	184	44	128	125	51	15	271	91	91
63	204	132	117	227	48	152	150	64	15	321	110	110
75	235	147	132	276	55	270	194	85	15	386	125	125
90	255	168	147	297	62	270	200	105	15	421	140	140

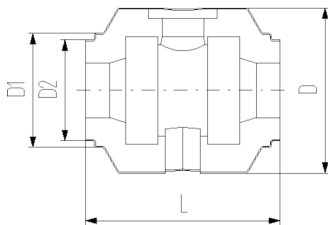
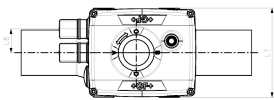
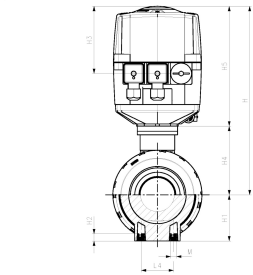
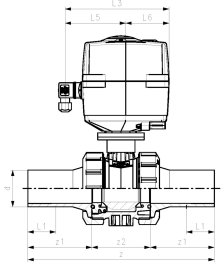


COOL-FIT 4.0 Ball valve type 179
100-230V



Model:

- Material: ABS with spigot PE100 SDR11, metric
- Ball seat PTFE
- Integrated stainless steel mounting inserts
- Voltage 100-230V, 50-60Hz
- Factory set control range 90°
- Heating element, position feedback (Open/Close/ Middle)
- Including insulation half shells
- Separate Fittings type A needed for joining



d (mm)	DN (mm)	PN (bar)	kv-value (dp=1 bar)	SDR	Code	Weight (kg)
32	25	10	700	11	138 546 208	2.838
40	32	10	1000	11	138 546 209	3.174
50	40	10	1600	11	138 546 210	3.452
63	50	10	3100	11	138 546 211	4.475
75	65	10	5000	11	138 546 212	7.156
90	80	10	7000	11	138 546 213	13.000

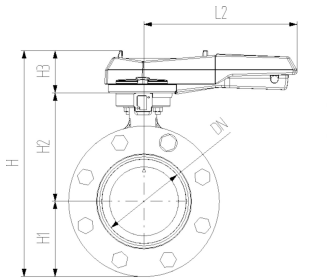
d (mm)	D (mm)	D1 (mm)	D2 (mm)	H (mm)	H1 (mm)	H2 (mm)	L (mm)	L1 (mm)	L3 (mm)	L4 (mm)	M	z (mm)	z1 (mm)	z2 (mm)
32	135	97	82	228	36	12	152	36	190	25	M6	223	76	71
40	157	117	97	240	44	15	170	40	190	45	M8	249	82	85
50	169	117	97	246	51	15	184	44	190	45	M8	271	91	89
63	204	132	117	263	64	15	227	48	190	45	M8	321	110	101
75	235	147	132	322	85	15	276	55	190	70	M8	386	125	136
90	255	168	147	357	105	15	297	62	190	70	M8	421	140	141



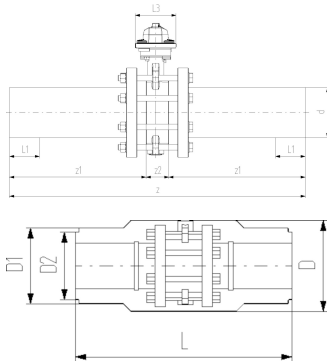
COOL-FIT 4.0 Wafer-style butterfly valve kit type 567 Hand lever with ratchet settings

Model:

- Material: ABS with spigot PE100 SDR11, metric
- Including flange adaptors, backing flanges PP-Steel, bolts and insulation half shells
- Separate Fittings type A needed for joining



d (mm)	DN (mm)	PN	kv-value ($\Delta p=1$ bar) (l/min)	EPDM Code	Weight (kg)
110	100	10	6500	138 567 114	8.950
140	125	10	11500	138 567 116	15.751
160	150	10	16600	138 567 117	17.975
225	200	10	39600	138 567 120	28.316

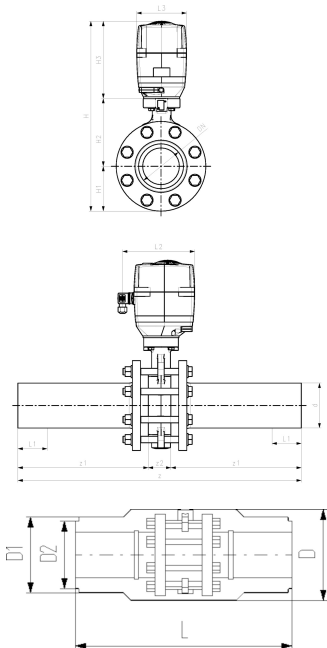


d (mm)	D (mm)	D1 (mm)	D2 (mm)	L (mm)	L1 (mm)	L2 (mm)	L3 (mm)	H (mm)	H1 (mm)	H2 (mm)	H3 (mm)	z (mm)	z1 (mm)	z2 (mm)
110	310	188	168	556	72	255.0	106	325	104	167	55	696	320	56
140	280	233	222	670	84	252.5	58	369	119	180	70	830	383	64
160	358	259		720	90	255.0	115	401	143	203	55	895	412	72
225	409	325		776	110	408.0	149	465	170	210	85	996	462	73

COOL-FIT 4.0 Wafer-style butterfly valve kit type 145 100-230V

Model:

- Material: ABS with spigot PE100 SDR11, metric
- Voltage 100-230V, 50-60Hz
- Factory set control range 90°
- Heating element, position feedback (Open/Close/ Middle)
- Including flange adaptors, backing flanges PP-Steel, bolts and insulation half shells
- Separate Fittings type A needed for joining



d (mm)	DN (mm)	PN	kv-value ($\Delta p=1$ bar) (l/min)	EPDM Code	Weight (kg)
110	100	10	6500	138 567 214	13.320
140	125	10	11500	138 567 216	18.650
160	150	10	16500	138 567 217	22.346
225	200	10	39600	138 567 220	36.037

d (mm)	D (mm)	D1 (mm)	D2 (mm)	L (mm)	L1 (mm)	L2 (mm)	L3 (mm)	H (mm)	H1 (mm)	H2 (mm)	H3 (mm)	z (mm)	z1 (mm)	z2 (mm)
110	310	188	168	552	72	179	122	460	104	167	190	696	320	56
140	280	233	222	670	84	172	179	475	119	173	183	830	383	64
160	358	259		720	90	179	122	535	143	203	190	895	412	72
225	409	325		776	110	179	122	580	170	210	200	996	462	73



Wafer-style, intermediate installation butterfly valve type 565 PVDF/PA-GF
With hand lever
Flange standard metric/ANSI/BS/JIS
Suitable for ABS, PVC-U, PVC-C, ecoFIT, COOL-FIT and PROGEF Systems

Model:

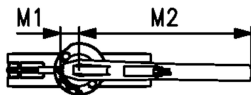
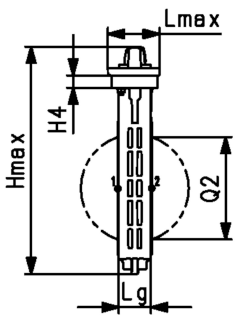
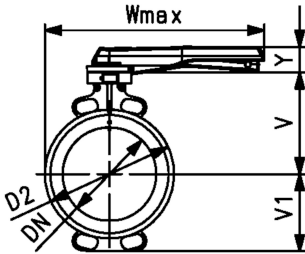
- Installation length: EN558 row 20, ISO 5752 row 20, API 609 table 2
- Flange standards: ISO 7005 PN10/16, EN 1092 PN10/16, DIN 2501 PN10/16, ANSI/ASME B 16.5 Class 150, BS 1560: 1989 Class 125/150; BS 4504 PN10/16, JIS B 2220 10K, JIS B 2239 10K
- For easy installation and removal
- Lockable ergonomic lever
- Suitable for water and water treatment applications (e.g. sea water, drinking water and industrial water)

Option:

- Individual configuration of the valve possible
- Pneumatic or electric actuators from GF
- Double sensor for electrical position feedback incl. LED feedback

Note:

For some material combination (e.g. DN300 valves with PE/PP pipes) special flange adapters are needed. Please check the "Perfect flange connection tool" on www.gfps.com



d	Size	DN	PN	kv-value	EPDM	SP	Weight	FKM	SP	Weight
(mm)	(inch)	(mm)	(bar)	($\Delta p=1$ bar)	Code		(kg)	Code		(kg)
63	2	50	16	1445	199 565 000	1	1.3	199 565 020	1	1.4
75	2 ½	65	16	2530	199 565 001	1	1.5	199 565 021	1	1.6
90	3	80	16	4020	199 565 002	1	1.7	199 565 022	1	1.8
110	4	100	16	5850	199 565 003	1	2.5	199 565 023	1	2.7
140	5	125	16	11900	199 565 004	1	3.1	199 565 024	1	3.3
160	6	150	16	18050	199 565 005	1	4.0	199 565 025	1	4.3
225	8	200	10	43667	199 565 006	1	5.3	199 565 026	1	5.7

d	D2	Wmax	Hmax	Lmax	H4	V	V1	Lg	M1	M2	Y	Q2
(mm)	(mm)	(mm)	(mm)	(mm)	(mm)	(mm)	(mm)	(mm)	(mm)	(mm)	(mm)	(mm)
63	100.0	264.0	249.5	96.0	23.0	133.5	63.0	43.0	35.5	204.5	53.0	28.5
75	121.0	271.0	275.5	96.0	23.0	140.0	82.0	46.0	35.5	204.5	53.0	44.0
90	138.0	273.5	288.0	96.0	23.0	146.0	89.0	46.0	35.5	204.5	53.0	63.5
110	158.5	334.0	324.0	96.0	23.0	166.5	104.0	52.0	35.5	254.5	53.0	84.0
140	187.0	348.0	351.0	96.0	23.0	180.0	118.0	56.0	35.5	254.5	53.0	110.5
160	213.0	426.0	372.5	96.0	23.0	189.0	130.5	56.0	35.5	319.5	53.0	137.5
225	267.0	453.0	422.0	96.0	23.0	209.5	159.0	60.0	35.5	319.5	53.0	190.5



Wafer-style intermediate installation butterfly valve type 565 PVDF/PA-GF
With electric actuator 230V
Without manual override
Flange standard metric/ANSI/BS/JIS
Suitable for ABS, PVC-U, PVC-C, ecoFIT, COOL-FIT and PROGEF Systems

Model:

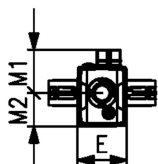
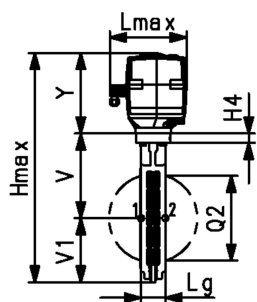
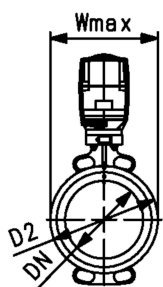
- Installation length: EN558 row 20, ISO 5752 row 20, API 609 table 2
- Flange standards: ISO 7005 PN10/16, EN 1092 PN10/16, DIN 2501 PN10/16, ANSI/ASME B 16.5 Class 150, BS 1560: 1989 Class 125/150; BS 4504 PN10/16, JIS B 2220 10K, JIS B 2239 10K
- For easy installation and removal
- Voltage 100-230V, 50-60Hz
- Factory set control range 0-90°
- Heating element, position feedback (Open/Close/ Middle)
- Manual override integrated in electric actuator
- Suitable for water and water treatment applications (e.g. sea water, drinking water and industrial water)
- Switching Ring for the double sensor for electrical position feedback is pre-assembled. Double sensor can be ordered as accessory

Option:

- Individual configuration of the valve possible
- Hand or pneumatic actuators from GF
- Double sensor for electrical position feedback incl. LED feedback
- Optional accessories: Fail-safe return unit, Monitoring board, Position controller, Profibus DP board
- Additional manual override between valve and actuator

Note:

For some material combination (e.g. DN300 valves with PE/PP pipes) special flange adapters are needed. Please check the "Perfect flange connection tool" on www.gfps.com



d (mm)	DN (mm)	Size (inch)	PN (bar)	kv-value (Δp=1 bar) (L/min)	Actuator	EPDM Code	SP	Weight (kg)
63	50	2	10	1445	EA45	199 565 300	1	3.3
75	65	2 ½	10	2530	EA120	199 565 301	1	4.6
90	80	3	10	4020	EA120	199 565 302	1	4.7
110	100	4	10	5850	EA120	199 565 303	1	5.6
140	125	5	10	11900	EA120	199 565 304	1	6.1
160	150	6	10	18050	EA250	199 565 305	1	8.7
225	200	8	10	43667	EA250	199 565 306	1	10.0
280	250	10	6	62333	EA250	199 565 307	1	14.5
315	300	12	4	94500	EA250	199 565 308	1	18.2

d (mm)	FKM Code	SP	Weight (kg)
63	199 565 320	1	3.4
75	199 565 321	1	4.7
90	199 565 322	1	4.8
110	199 565 323	1	5.8
140	199 565 324	1	6.4
160	199 565 325	1	9.0
225	199 565 326	1	10.5
280	199 565 327	1	15.2
315	199 565 328	1	19.4

d (mm)	D2 (mm)	Wmax (mm)	Hmax (mm)	Lmax (mm)	H4 (mm)	V (mm)	V1 (mm)	Lg (mm)	E (mm)	M1 (mm)	M2 (mm)	Y (mm)	Q2 (mm)
63	100.0	122.5	377.5	190.0	23	133.5	63.0	43	122.5	107.5	83	166.5	28.5
75	121.0	132.5	411.5	190.0	23	140.0	82.0	46	122.5	107.5	83	189.5	44.0
90	138.0	137.5	424.0	190.0	23	146.0	89.0	46	122.5	107.5	83	189.5	63.5
110	158.5	158.5	459.5	190.0	23	166.5	104.0	52	122.5	107.5	83	189.5	84.0
140	187.0	187.0	487.5	190.0	23	180.0	118.0	56	122.5	107.5	83	189.5	110.5
160	213.0	213.0	518.5	190.0	23	189.0	130.5	56	122.5	107.5	83	199.5	137.5
225	267.0	267.0	568.0	190.0	23	209.5	159.0	60	122.5	107.5	83	199.5	190.5
280	325.5	325.5	674.5	190.0	23	262.5	195.5	68	122.5	107.5	83	216.5	239.0
315	380.0	380.0	731.0	190.0	23	284.5	230.5	78	122.5	107.5	83	216.5	285.5



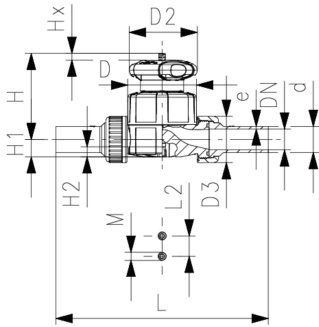
ABS Diaphragm valve type 514
With butt fusion spigots long

Model:

- Double flow rate compared to predecessor
- One housing nut replaces four screws
- Handwheel with built-in locking mechanism
- For easy installation and removal
- Short overall length

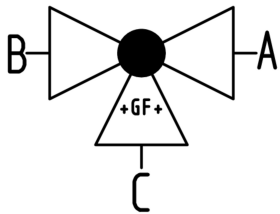
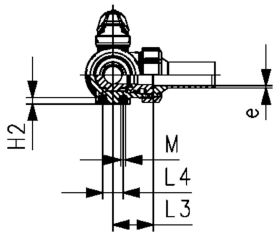
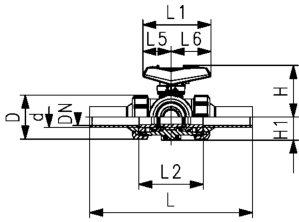
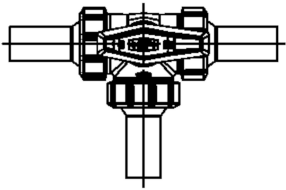
Option:

- Individual configuration of the valve
- Self adjusting multifunctional module with integrated limit switches



d (mm)	DN (mm)	Size (inch)	PN (bar)	kv-value ($\Delta p=1$ bar) (l/min)	EPDM Code
20	15	½	10	125	169 514 312
25	20	¾	10	271	169 514 313
32	25	1	10	481	169 514 314
40	32	1 ¼	10	759	169 514 315
50	40	1 ½	10	1263	169 514 316
63	50	2	10	1728	169 514 317

d (mm)	DN (mm)	D (mm)	D2 (mm)	D3 (mm)	H (mm)	H1 (mm)	H2 (mm)	L (mm)	L2 (mm)	M	z (mm)	Lift = Hx (mm)	closest inch (inch)
20	15	65	65	43	73	14	12	230	25	M6	96	7	½
25	20	80	65	51	81	18	12	256	25	M6	114	10	¾
32	25	88	87	58	107	22	12	268	25	M6	122	13	1
40	32	101	87	72	115	26	15	302	45	M8	140	15	1 ¼
50	40	117	135	83	148	32	15	334	45	M8	160	19	1 ½
63	50	144	135	100	166	39	15	376	45	M8	190	25	2



ecoFIT 3-Way ball valve type 543 Pro ABS
Horizontal/L-port
With butt fusion spigots long PE100 SDR11 metric

Model:

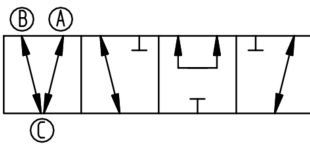
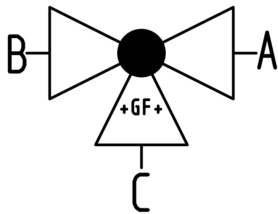
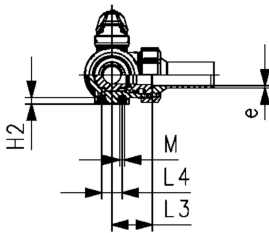
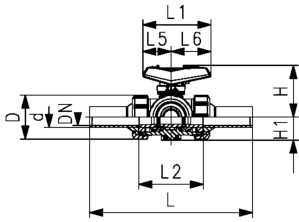
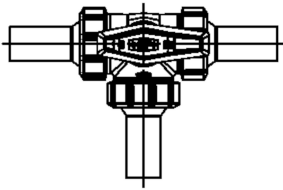
- Lockable lever as standard (DN10-DN50)
- Material: ABS/PE
- For easy installation and removal (valve end and union nut are compatible with type 546)
- Ball seat PTFE
- Angle of operation 360° without turn limiter
- Turn limiter 90° enclosed, in different positions usable as a clip-on ring
- Integrated stainless steel mounting inserts
- Delivery status A-C opened, see flow scheme
- Z-dimension, valve end and union nut are compatible with type 543 (1stGeneration)

Option:

- Interface-module with position feedback sensor, incl. LED feedback (DN10-50)
- Manual spring return lever ("Dead man") (DN10-25)
- Pneumatic or electric actuators from GF
- Individual configuration of the valve possible

d	DN	Size	PN	kv-value	EPDM	Weight
(mm)	(mm)	(inch)	(bar)	($\Delta p=1$ bar)	Code	(kg)
				(l/min)		
20	15	½	10	75	169 543 302	0.203
25	20	¾	10	150	169 543 303	0.296
32	25	1	10	280	169 543 304	0.450
40	32	1 ¼	10	480	169 543 305	0.762
50	40	1 ½	10	620	169 543 306	1.161
63	50	2	10	1230	169 543 307	2.509

d	DN	D	L	L1	L2	L3	L4	L5	L6	H	H1	H2	M	e	closest
(mm)	(mm)	(mm)	(mm)	(mm)	(mm)	(mm)	(mm)	(mm)	(mm)	(mm)	(mm)	(mm)	(mm)	(mm)	inch
															(inch)
20	15	50	210	82	73	36	25	35	47	61	28	8	6	1.9	½
25	20	58	237	106	86	43	25	44	62	74	32	8	6	2.3	¾
32	25	68	251	106	99	50	25	44	62	80	36	8	6	2.9	1
40	32	84	283	131	120	60	45	57	74	95	45	9	8	3.7	1 ¼
50	40	97	319	131	137	69	45	57	74	102	51	9	8	4.6	1 ½
63	50	124	399	152	179	89	45	66	86	117	65	9	8	5.8	2



ecoFIT 3-Way ball valve type 543 Pro ABS
Horizontal/T-port
With butt fusion spigots long PE100 SDR11 metric

Model:

- Material: ABS/PE
- Lockable lever as standard (DN10-DN50)
- For easy installation and removal (valve end and union nut are compatible with type 546)
- Ball seat PTFE
- Angle of operation 360° without turn limiter
- Turn limiter 90° enclosed, in different positions usable as a clip-on ring
- Integrated stainless steel mounting inserts
- Delivery status A-B-C opened, see flow scheme
- Z-dimension, valve end and union nut are compatible with type 543 (1stGeneration)

Option:

- Interface-module with position feedback sensor, incl. LED feedback (DN10-50)
- Manual spring return lever ("Dead man") (DN10-25)
- Pneumatic or electric actuators from GF
- Individual configuration of the valve possible

d	DN	Size	PN	kv-value	EPDM	Weight
(mm)	(mm)	(inch)	(bar)	($\Delta p=1$ bar)	Code	(kg)
				(l/min)		
20	15	½	10	200	169 543 322	0.203
25	20	¾	10	470	169 543 323	0.296
32	25	1	10	793	169 543 324	0.450
40	32	1 ¼	10	1290	169 543 325	0.762
50	40	1 ½	10	1910	169 543 326	1.161
63	50	2	10	3100	169 543 327	2.509

d	DN	D	L	L1	L2	L3	L4	L5	L6	H	H1	H2	M	e	closest
(mm)	(mm)	(mm)	(mm)	(mm)	(mm)	(mm)	(mm)	(mm)	(mm)	(mm)	(mm)	(mm)	(mm)	(mm)	inch
															(inch)
20	15	50	210	82	73	36	25	35	47	61	28	8	6	1.9	½
25	20	58	237	106	86	43	25	44	62	74	32	8	6	2.3	¾
32	25	68	251	106	99	50	25	44	62	80	36	8	6	2.9	1
40	32	84	283	131	120	60	45	57	74	95	45	9	8	3.7	1 ¼
50	40	97	319	131	137	69	45	57	74	102	51	9	8	4.6	1 ½
63	50	124	399	152	179	89	45	66	86	117	65	9	8	5.8	2

COOL-FIT 4.0 Accessories



COOL-FIT 4.0 Assembly Aid-Kit Type B

Model:

- For simplified mounting of COOL-FIT 4.0 Fitting on COOL-FIT 4.0 Pipe

d (mm)	D (mm)	Code	Weight (kg)	pieces/kit
32	90	799 738 511	0.384	6
40 - 50	110	799 738 512	0.456	6
63	125	799 738 513	0.504	6
75	140	799 738 514	0.564	6
90	160	799 738 515	0.636	6
110	180	799 738 516	0.708	6
140	225	799 738 518	0.131	4
160	250	799 738 519	0.620	4
225	315	799 738 522	0.760	4



COOL-FIT 4.0 Assembly Aid-Kit Type A

Model:

- For simplified mounting of COOL-FIT 4.0 Fitting on COOL-FIT 4.0 Pipe

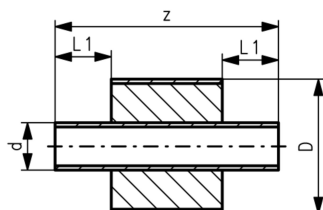
d (mm)	D (mm)	Code	Weight (kg)	pieces/kit
32 - 225	90 - 315	799 738 502	6.100	2 / Dimension



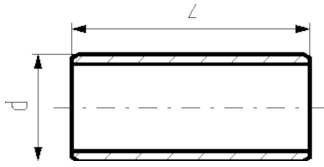
COOL-FIT 4.0 Barrel nipple with insulation, d32-d225

Model:

- Pre-insulated PE100 SDR11/17 metric
- Insulation made from GF HE foam
- Impact resistant. Color: black
- For short connections between COOL-FIT 4.0 Fittings Typ A



d (mm)	D (mm)	DN (mm)	SDR	PN (bar)	Code	Weight (kg)	L1 (mm)	z (mm)
32	90	25	11	16	738 913 408	0.126	36	151
40	110	32	11	16	738 913 409	0.188	40	155
50	110	40	11	16	738 913 410	0.226	44	163
63	125	50	11	16	738 913 411	0.328	48	171
75	140	65	11	16	738 913 412	0.447	55	185
90	160	80	11	16	738 913 413	0.631	62	199
110	180	100	11	16	738 913 414	0.929	72	219
140	225	125	11	16	738 913 416	1.101	84	243
160	250	150	17	10	738 913 417	1.576	90	255
225	315	200	17	10	738 913 420	3.254	110	295



COOL-FIT 2.0/4.0 Barrel nipple

Model:

- PE100, SDR11/17, metric
- For the shortest possible connection between fittings
- For media temperatures between 0°C up to 60°C
- COOL-FIT 4.0 Adhesive ring needed for joining

d (mm)	DN (mm)	SDR	PN	Code	Weight (kg)	z (mm)
32	25	11	16	738 910 408	0.020	72
40	32	11	16	738 910 409	0.034	80
50	40	11	16	738 910 410	0.059	88
63	50	11	16	738 910 411	0.101	96
75	65	11	16	738 910 412	0.162	110
90	80	11	16	738 910 413	0.264	124
110	100	11	16	738 910 414	0.454	144
140	125	11	16	738 910 416	0.855	168
160	150	17	10	738 910 417	0.798	180
225	200	17	10	738 910 420	1.885	220



COOL-FIT 2.0/4.0 adhesive ring

Model:

- Double sided, for sealing connections of fittings with barrel nipple

D (mm)	d (mm)	d COOL-FIT 4.0 (mm)	d COOL-FIT 2.0 (mm)	Code	Weight (kg)
75	32		32	738 010 012	0.002
90	32 - 50	32	40 - 50	738 010 013	0.002
110	40 - 63	40 - 50	63	738 010 014	0.003
125	63 - 75	63	75	738 010 015	0.003
140	75 - 90	75	90	738 010 016	0.003
160	90 - 110	90	110	738 010 017	0.005
180	110	110		738 010 018	0.005
200	140		140	738 010 019	0.006
225	140	140		738 010 020	0.009
250	160	160		738 010 021	0.009
315	225	225		738 010 023	0.027

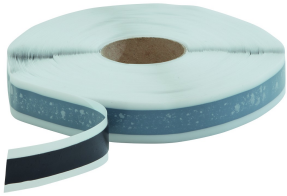


COOL-FIT 4.0 Sealing clamp-kit

Model:

- Supports the function of the top sealing lip of COOL-FIT 4.0 Fittings for vertical installations outdoor
- Material: stainless steel 304/V2A
- Color: black

d (mm)	D (mm)	Code	Weight (kg)	pieces/kit
32	90	738 013 013	0.250	6
40 - 50	110	738 013 014	0.300	6
63	125	738 013 015	0.300	6
75	140	738 013 016	0.300	6
90	160	738 013 017	0.300	6
110	180	738 013 018	0.300	6
140	225	738 013 020	0.300	6
160	250	738 013 021	0.390	6
225	315	738 013 023	0.450	6

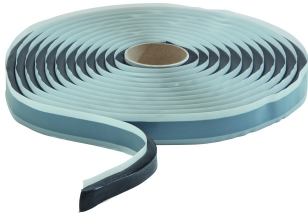


COOL-FIT 4.0 Sealing tape 25mm

Model:

- Supports the function of the top sealing lip of COOL-FIT 4.0 Fittings for vertical installations outdoor
- 30m on a roll, 25mm width, buthylene rubber-based

d (mm)	D (mm)	Code	Weight (kg)
32 - 225	90 - 315	738 013 031	1.400



COOL-FIT 4.0 Transition of Insulation

Model:

- For a moistur-proof and vapour tight transition of insulations from COOL-FIT 4.0 to COOL-FIT 2.0
- 4.5m on a roll, buthylene rubber-based

d (mm)	D (mm)	Code	Weight (kg)
32-140	90-225	738 013 041	1.400



COOL-FIT 4.0 Sealing tape 40mm

Model:

- For a water- and steam-tight sealing of inspection gaps in combination with shrink sleeves/ - sockets
- Sealing tape: 40mm width, buthylene rubber-based
- 30 m on a roll

d-d (mm)	D (mm)	Code	Weight (kg)	Closest inch (inch)
25 - 450	250 - 630	738 011 152	2.134	¾ - 18



COOL-FIT 4.0 insulation for welding indicator, coupler d250-d450

- Suitable for COOL-FIT 4.0 couplers d250-d450
- Insulation for welding pin and welding indicator opening
- 2.5m on a roll, 20mm diameter, closed-cell PE foam

d (mm)	Code	Weight (kg)
250 - 450	738 010 055	0.500



COOL-FIT 4.0 Shrink socket PE

Model:

- For a water- and steam-tight sealing in combination with buthylene rubber-based sealing tape
- Length: 150 mm
- "Heavy duty" version for high end applications
- For connections of the same pipe outer diameter

D (mm)	d (mm)	Code	SP	Weight (kg)	L (mm)
355	250	738 011 024	1	0.900	150
400	280	738 011 025	1	1.100	150
450	315	738 011 026	1	1.900	150
500	355	738 011 027	1	1.000	150
560	400	738 011 028	1	1.000	150
630	450	738 011 029	1	1.000	150



Cold shrink tape PE black

Model:

- For indoor use only
- Width (L) available in 100mm
- 15 m on a roll
- Shrinks without heat application

d-d (mm)	D (mm)	Code	Weight (kg)	Closest inch (inch)
25 - 450	90 - 630	738 011 107	1.400	¾ - 18



Hot shrink tape PE black

Model:

- For watertight sealing of outer pipe in underground installations
- Mastic backed
- 30 m on a roll
- Shrink with a burner or hot air gun
- Order sealing patches separately (738 011 109)

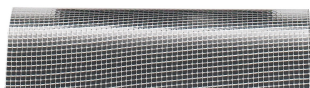
d-d (mm)	D (mm)	Code	Weight (kg)	L (mm)
250 - 455	355 - 630	738 011 108	3.000	150

Aussenrohr D/ jacket pipe D (mm)	Länge Schrumpfband/ shrink tape length (mm)
355	1210
400	1350
450	1500
500	1660
560	1850
630	2070

Sealing patch

Model:

- For sealing of hot-shrink-tape in underground installations
- Mastic backed
- 1 patch needed per seal



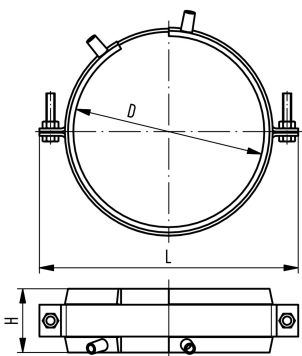
d-d (mm)	D (mm)	Code	Weight (kg)	L (mm)
25 - 450	90 - 630	738 011 109	0.100	150



COOL-FIT 2.0/4.0 Fixed point

Model:

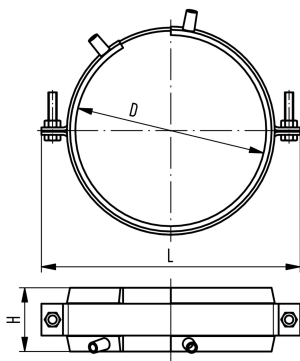
- The product consists of two components namely electrofusion tapes and pipe brackets.
- Electrofusion welded tape as permanent connection to transmit the forces that occur in the pipe to the fixed point.
- The delivered pipe brackets are needed to deliver welding pressure during installation and give stability during operation.
- For welding, use an MSA2.x, MSA4.x, MSA 250, 300, 350, 400 or commercially available 220 V fusion machines.
- If you use an MSA fusion machine from GF Piping Systems, use the 799 350 339 adapter or the 790 156 032 y-cable set.
- Please take note of the maximum allowed forces for this version in the table below.
- **Fixed point brackets and cross braces have to be calculated and obtained by the installer. They are not included in the fixed point set from GF.**



D (mm)	d (mm)	d COOL-FIT 4.0 (mm)	d COOL-FIT 2.0 (mm)	Code	Weight (kg)
75	32		32	738 912 012	0.750
90	32 - 50	32	40 - 50	738 912 013	0.895
110	40 - 63	40 - 50	63	738 912 014	0.904
125	63 - 75	63	75	738 912 015	1.103
140	75 - 90	75	90	738 912 016	1.188
160	90 - 110	90	110	738 912 017	1.177
180	110	110		738 912 018	1.530
200	140		140	738 912 019	1.600
225	140	140		738 912 020	1.813
250	160	160		738 912 021	1.957
315	225	225		738 912 023	2.388
355	250	250		738 912 024	2.388

D (mm)	d (mm)	L (mm)	H (mm)	max Force COOL-FIT 4.0 (kN)	max Force COOL-FIT 2.0 (kN)
75	32	150	60		2.0
90	32 - 50	170	60	2.0	3.0 / 5.0
110	40 - 63	180	60	3.0 / 5.0	8.0
125	63 - 75	215	60	8.0	10.0
140	75 - 90	220	60	10.0	10.0
160	90 - 110	255	60	10.0	10.0
180	110	255	60	10.0	
200	140	310	60		10.0

table continued on the next page



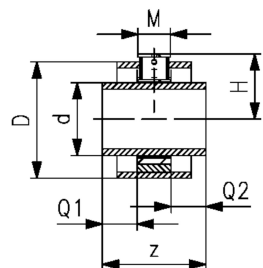
D (mm)	d (mm)	L (mm)	H (mm)	max Force COOL-FIT 4.0 (kN)	max Force COOL-FIT 2.0 (kN)
225	140	310	60	10.0	
250	160	335	60	10.0	
315	225	400	60	10.0	
355	250	420	60	10.0	



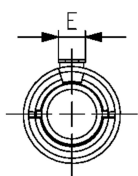
COOL-FIT 4.0 Fixpoint kit for high forces

Model:

- The product consists of fixpoint, pipe section and insulation kit
- Fixed point for installation between two electrofusion fittings, transmits the forces emanating from the pipe to the fixed point
- Pipe section PE100 SDR11, metric
- Fixpoint with welding plate made from S235JR (1.0038). With corrosion protection coating
- Insulation made from EPDM soft foam. For outdoor application use additional protection
- Please take note of the maximum allowed forces for this version in the table below.
- A force calculation of the fixpoint clamp and the attachment point is required
- For the bonding, adhesive 738010060 is recommended
- d355 to d450 on request with delivery time of 3 month.



d (mm)	D (mm)	DN (mm)	SDR	PN (bar)	Code	Weight (kg)
140	225	125	11	16	738 913 816	6.382
160	250	150	11	16	738 913 817	6.386
225	315	200	11	16	738 913 820	7.479
250	355	250	11	16	738 913 821	10.856
280	400	250	11	16	738 913 822	14.172
315	450	300	11	16	738 913 823	16.272



d (mm)	z (mm)	Q1 (mm)	Q2 (mm)	Dos (mm)	H (mm)	M (mm)	E (mm)	Wrench size (mm)	max. Force (kN)
140	268	84	84	251	136.5	100	100	24	35
160	280	90	90	283	165.5	100	100	24	35
225	320	110	110	360	205.0	100	100	24	35
250	346	123	123	391	213.5	100	100	24	35
280	352	126	126	436	231.0	100	100	24	35
315	366	133	133	486	279.0	100	180	24	35



COOL-FIT Y cables kit

- The COOL-FIT Y cables are used to speed up the installation of the fixed points electrofusion tapes. The Y cables allow the welding in parallel of 2 E-Tapes, halving the total duration of the fusion process.
- Compatible with all MSA Units

Type	Code	Weight (kg)
4 leads cable with 2mm plugs in output	790 156 032	0.385

Hand scraper



- The Hand Scraper can be used to prepare the fusion zone on PE80 pipes.

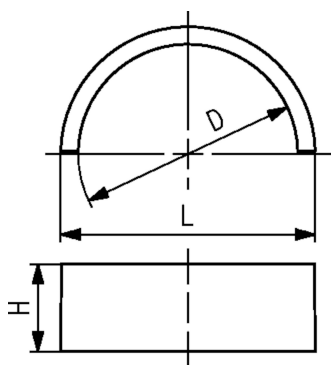
Description	Code	Weight (kg)
Hand scraper with long handle	799 198 094	0.143



COOL-FIT 4.0F fixed point set

Model:

- Four PVC-U half shells as permanent connection to transmit the forces that occur in the pipe to the fixed point.
- For cementing use Tangit RAPID, Tangit RAPID static mixer and Tangit RAPID dispenser
- Please take note of the maximum allowed forces for this version in the table below.
- Fixed point brackets and cross braces have to be calculated and obtained by the installer. They are not included in the fixed point set from GF.**



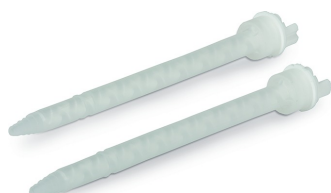
d (mm)	D (mm)	Code	SP	Weight (kg)	L (mm)	H (mm)	max Force (kN)
160	250	738 912 321	1	1.957	284	35	10.0
225	315	738 912 323	1	2.388	356	35	10.0



Tangit Rapid cartridges kit

- 2-Component-Adhesive
- For PVC-U and PVC-C
- Tangit Rapid Kit consists of 6 cartridges, 12 mixers and 2 plastic brushes
- Tool needed: Tangit Rapid dispenser and mixers
- Check chemical resistance list (www.gfps.com)

Language	description	Code	Weight (kg)
DE, FR	50 ml	799 302 005	0.566
FR, NL	50 ml	799 302 041	0.566
DK, SE	50 ml	799 302 042	0.566
GB, IT	50 ml	799 302 043	0.566
FI, NO	50 ml	799 302 044	0.566
DE, ES, FR, GB, IT, NL, PT	400 ml	799 302 007	3.700
DK, FI, NO, SE	400 ml	799 302 047	3.700



Tangit Rapid mixer set

- For Tangit Rapid cartridges
- Bag with 30 pieces for 50ml and 15 pieces for 400ml

description	Code	SP	Weight (kg)
50ml	799 302 032	1	0.160
400ml	799 302 033	1	0.190



Tangit Rapid dispenser

- For Tangit Rapid cartridges

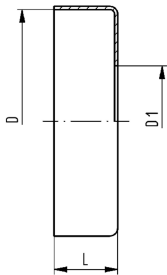
d-d (mm)	description	Code	SP	Weight (kg)
16 - 140	50ml	799 302 011	1	0.185
110 - 400	400ml	799 302 013	1	1.100



COOL-FIT 4.0 Endcap

Model:

- To protect the insulation at the end of a COOL-FIT 4.0 piping system



d (mm)	D (mm)	D1 (mm)	Code	Weight (kg)	L (mm)
250	355	265	733 960 185	0.155	35
280	400	300	733 960 186	0.185	35
315	450	335	733 960 187	0.225	35
355	500	370	733 963 188	0.269	35
400	560	420	733 963 189	0.269	35
450	630	470	733 963 190	0.269	35



Sealant

Model:

- For sealing and gluing of insulation of Weld-in ports and caps
- Cartridge à 290 ml

	Code	SP	Weight (kg)
290 ml	738 011 103	1	0.473



COOL-FIT 2.0/4.0 Adhesive cement

Model:

- For the jointing of NBR foam insulations of flexible hoses and transition fittings

	Code	SP	Weight (kg)
	738 010 060	1	0.240



COOL-FIT 2.0/4.0 Adhesive tape

Model:

- For the jointing of NBR foam insulations of flexible hoses and transition fittings
- 30m on a roll

	Code	SP	Weight (kg)
	738 010 065	1	0.400



Tangit KS Cleaner

- Special cleaner for plastic fusion connections in the material of PE, PP, PB, PVDF, ECTFE and PVC-U
- Suitable for Tangit Rapid. Must not be used for solvent cementing
- DVGW approved
- DW 5290 BR 0464

Size	Code	Weight (kg)
1 liter	799 298 023	0.872



Marker

Type	Code	Weight (kg)
silver	799 350 364	0.010



Deburring tool

- Replacable blade

Code	SP	Weight (kg)
790 205 082	1	0.058

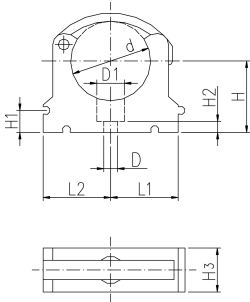


Measuring tape (circumference and diameter)

- Circumference: 2 m / 79 inch
- Diameter: 630 mm / 25 inch

Code	SP	Weight (kg)
790 205 087	1	0.045

KLIP-IT pipe clip type 061 PP metric

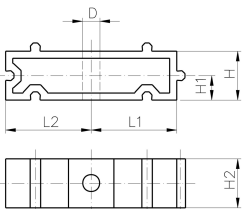


Model:

- Material: clip and safety clip PP black, UV resistant
- d16 - d63: height designed for ball valve type 546 and 543
- **Minimum order quantity: standard packagings SP**

	d (mm)	Code	SP	Weight (kg)
*	10	167 061 003	10	0.003
*	12	167 061 004	10	0.003
*	16	167 061 035	10	0.007
*	20	167 061 036	10	0.007
*	25	167 061 037	10	0.009
*	32	167 061 038	10	0.012
	40	167 061 039	10	0.027
	50	167 061 040	10	0.031
	63	167 061 041	10	0.052
	75	167 061 012	10	0.057
	90	167 061 013	10	0.092
	110	167 061 014	10	0.117
	125	167 061 015	10	0.180
	140	167 061 016	10	0.224
	160	167 061 017	10	0.242

	d (mm)	D (mm)	D1 (mm)	H (mm)	H1 (mm)	H2 (mm)	H3 (mm)	L1 (mm)	L2 (mm)	SC	closest inch (inch)
*	10	5	8	20	10	6	12	11	14	M4	1/8
*	12	5	8	21	10	6	12	11	14	M5	1/4
*	16	6	11	27	10	6	16	14	17	M5	3/8
*	20	6	11	27	10	6	16	17	19	M5	1/2
*	25	6	11	30	10	6	16	19	22	M5	3/4
*	32	6	11	36	10	6	16	24	27	M5	1
	40	7	14	44	10	7	22	34	34	M6	1 1/4
	50	7	14	51	10	7	22	37	37	M6	1 1/2
	63	9	17	64	10	10	25	45	45	M8	2
	75	9	17	58	10	10	25	52	52	M8	2 1/2
	90	9	17	65	10	10	28	65	65	M8	3
	110	9	17	75	10	10	28	79	79	M8	4
	125	9	17	90	10	10	32	88	88	M8	
	140	9	17	110	10	10	32	98	98	M8	5
	160	9	17	108	10	10	32	109	109	M8	6



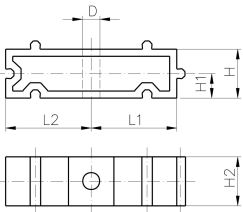
KLIP-IT spacer type 061 PP

Model:

- For pipe clips type 061/061H, PP black, UV resistant
- **Minimum order quantity: standard packaging SP**

	d (mm)	Inch (inch)	Code	SP	Weight (kg)	D (mm)	L1 (mm)	L2 (mm)	H (mm)	H1 (mm)	H2 (mm)	SC
	10 - 12	1/8 - 1/4	167 061 153	10	0.003	5	11	14	20	10	12	M4
	16	3/8	167 061 155	10	0.005	6	14	17	20	10	16	M5
	20	1/2	167 061 156	10	0.005	6	17	19	20	10	16	M5
	25	3/4	167 061 157	10	0.007	6	19	22	20	10	16	M5
	32	1	167 061 158	10	0.006	6	24	27	20	10	16	M5
	40	1 1/4	167 061 159	10	0.015	7	34	34	20	10	22	M6
	50	1 1/2	167 061 160	10	0.017	7	37	37	20	10	22	M6
	63	2	167 061 161	10	0.020	9	45	45	20	10	25	M8
	75	2 1/2	167 061 162	10	0.027	9	52	52	20	10	25	M8
	90	3	167 061 163	10	0.039	9	65	65	20	10	28	M8

table continued on the next page



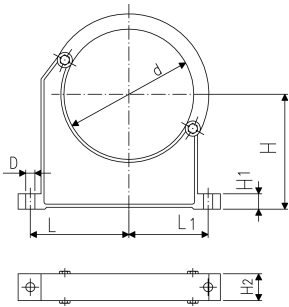
d (mm)	Inch (inch)	Code	SP	Weight (kg)	D (mm)	L1 (mm)	L2 (mm)	H (mm)	H1 (mm)	H2 (mm)	SC
110	4	167 061 164	10	0.048	9	79	79	20	10	28	M8
125	4 ½	167 061 165	10	0.059	9	88	88	20	10	32	M8
140	5	167 061 166	10	0.065	9	98	98	20	10	32	M8
160	6	167 061 167	10	0.071	9	109	109	20	10	32	M8



Pipe clip type 060 PP metric

Model:

- Material: clip and safety clip PP black, UV resistant
- **Minimum order quantity: standard packaging SP or gross packaging GP**
- Accidental opening of the safety clip is not possible
- Clip and safety clip are not assembled in the packaging.
- Pipes with flanges can be installed directly



d (mm)	Code	SP	Weight (kg)	D (mm)	L (mm)	L1 (mm)	H (mm)	H1 (mm)	H2 (mm)	SC	closest inch (inch)
90	167 060 038	10	0.144	9	89	71	105	15	33	M 8	3
110	167 060 039	10	0.158	9	94	80	115	15	33	M 8	4
125	167 060 040	10	0.249	11	116	91	130	20	35	M10	
140	167 060 041	10	0.260	11	121	99	130	20	35	M10	5
160	167 060 042	10	0.296	11	131	107	148	20	35	M10	6
180	167 060 043	10	0.327	11	143	115	163	20	35	M10	7
200	167 060 019	5	0.539	13	151	120	175	25	39	M12	8
225	167 060 020	5	0.612	13	164	132	175	25	39	M12	8
250	167 060 021	5	0.657	13	183	143	200	25	39	M12	9
280	167 060 022	5	0.722	13	197	156	200	25	39	M12	10
315	167 060 023	5	0.805	13	219	171	225	25	39	M12	12
355	167 060 024	5	1.251	17	275	209	258	30	50	M16	14
400	167 060 025	4	1.031	17	300	228	288	30	50	M16	16

COOL-FIT 4.0 Heat Tracing



Self regulating heating cable

Model:

- for pipe freeze protection
- cut to length on site
- suitable for in-pipe applications (inside the medium)
- zero maintenance after installation and commissioning
- no risk of overheating due to self-regulating technology
- Cables featuring self-regulating technology. The heat output automatically adjusts depending on the local temperature at every point along its length. It never overheats even when overlapping

L (m)	Code	Weight (kg)
200	790 738 001	14.400
62	790 738 003	4.460
40	790 738 005	2.280
20	790 738 007	1.440



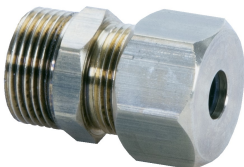
Electronic Controller for pipe freeze protection

The controller is designed to provide userfriendly measurement and control for the self regulating heating cable for COOL-FIT. The Controller has a 25 A control relay and an SPDT alarm relay. Parameter and eventual alarm conditions are shown on the digital display and settings can be programmed easily even without power supply. The controller is supplied with an NTC temperature sensor for efficient media temperature sensing, and mountable DIN rail 35mm for easy mounting option on walls.

Model:

- Easy set-up and programming of the unit
- Flexible temperature control of pipe freeze protection
- Media temperature sensing and/or ambient temperature sensing
- Proportional Ambient Sensing Control (PASC) algorithm for enhanced energy savings in ambient sensing mode
- Alarm relay with change over contact to signal power, temperature or communication problems
- Pipe temperature monitoring with high and low temperature alarm
- On wall mountable for outdoor location

Code
790 738 031



Cable gland

- For the leading the heating inside and outside the COOL-FIT 4.0 piping via threaded fitting

Model:

- Material: brass
- threaded connection: 3/4 " male thread R

R (inch)	Code	Weight (kg)
3/4	790 738 020	0.146



Cold lead connection and end seal kit

- For heating cables for COOL-FIT

Model:

- Heat-shrink technique

Inclusive:

- Crimps
- Cold lead shrinkable sleeves
- End seal shrinkable sleeves
- Mastic

Code Weight

(kg)

790 738 010 0.045

COOL-FIT 4.0 Tools



COOL-FIT 2.0/4.0 Foam removal and peeling tool

Model:

- Tool for foam removal and peeling of COOL-FIT 2.0 and 4.0 pipes

d (mm)	Code	Weight (kg)	SDR
32-90	799 738 001	10.500	SDR11
110-225	799 738 003	16.500	d110+d140 SDR11; d160+d225 SDR17
250-450	799 738 004	71.000	SDR17



COOL-FIT 2.0/4.0 Upgrade kit foam removal and peeling tool d140-d225

Model:

- Upgrade for COOL-FIT 2.0/4.0 foam removal and peeling tool d110-d225 (799738003)
- For easier foam removal and peeling of COOL-FIT 2.0 and 4.0 pipes in the dimensions d140-d225

Note:

Spindle and clamping shoes are to be used of COOL-FIT 2.0/4.0 foam removal and peeling tool 799738003

d (mm)	Code	Weight (kg)
140-225	799 738 013	50.000



COOL-FIT 2.0/4.0 Foam removal and peeling tool SDR11

Model:

- Tool for foam removal and peeling of COOL-FIT 2.0 and 4.0 pipes

d (mm)	Code	Weight (kg)	SDR
110-225	799 738 015	16.500	SDR11
250-450	799 738 016	71.000	SDR11



COOL-FIT 4.0 Clamping shoe set d250-d450, SDR11

- Suitable for COOL-FIT 2.0/4.0 foam removal and peeling tool (799 738 004)
- Case incl. lid containing clamping shoes, blade holder and accessories

d (mm)	Code	Weight (kg)	SDR
250 - 450	799 738 161	60.000	SDR11

MSA 2.1 Automatic Electrofusion Unit with Bluetooth connectivity and protocols export



The MSA 2.1 automatic electro fusion unit combines light weight and high efficiency, thanks to its inverter technology and furthermore provides fusion documentation in PDF. The unit is extremely fast and simple, with three basic operations required to operator: connect, scan, start the fusion. It is robust, safe and ergonomic.

All is meant to simplify the job: the barcode scanner, for long distance reading, the cooling system to joint in series, the icon system, to keep the interaction between user and machine intuitive. The entire welding process is controlled and regulated with energy output compensation depending on ambient temperature and the indication of cooling time.

The internal Bluetooth Low Energy device offers the possibility to enter data, monitor the fusion from remote and collect the data recorded via wireless with consumer smartphones, to send them to the headquarter even in real time.

The unit can keep up to 1000 protocols permanently stored in the internal memory. The user can export the fusion reports to an USB stick to print them out in PDF format.

Scope of delivery includes: transport box, angle adapters (4.0 mm and 4.7 mm), operating instructions, START/STOP badge and USB memory stick with PC applications.

Technical Data:

- Operating temperature: -20°C to +50°C
- Mains voltage and frequency: 230V (190V - 265V), 50-60Hz
- Fusion voltage: 8-42 V (48 V)
- Fusion data input mode: bar code, manual
- Fusion current: 90 A (max)
- Suggested power generators: 3.5 kVA
- USB Port: Type A
- Protection factor: Class 1 / IP 65
- Mains cable: 4 m (8 m only for code 790156010) / Fusion cable: 4 m
- Weight: ca. 11.9 kg
- Display: Graphical LCD, adjustable contrast
- Independent from languages
- Bluetooth radio interface

	Type	Code	Weight (kg)
Barcode scanner, transport case, mini Welding Book		790 156 003	11.900
Barcode scanner, transport case, mini Welding Book, Swiss plug		790 156 006	11.900
Barcode scanner, transport case, mini Welding Book, 8m fusion cable		790 156 010	12.900



Long adapters

- Adapters for Electrofusion units with 4 mm connectors.
- Longer version, suitable for all COOL-FIT 4.0 dimensions.

Type	Code	Weight (kg)	Description
4,0 mm	790 128 035	0.058	Angle adapters pair, black



COOL-FIT 2.0/4.0 Installation tool weld-in port

Model:

- Tool for the installation of weld-in ports to COOL-FIT pipes
- Complete: toolcase equipped with all necessary tool components to install weld-in ports 1/2"-1" and d16-d50
- Basic: toolcase equipped with all necessary tool components to install weld-in ports 1/2"-1" and d16-d32 and the possibility to upgrade with d40+d50
- Upgrade kit: kit to upgrade basic tool to complete tool
- Version 230V with AC power plug CEE 7/4 (Schuko)
- Version 110V with AC power plug NEMA 5-15 grounded (Type B)

Note:

For pipes COOL-FIT 2.0, COOL-FIT 2.0F, COOL-FIT 4.0 and COOL-FIT 4.0F of the dimension d63-d225

Type A) Complete: toolcase equipped with all necessary tool components to install weld-in ports 1/2"-1" and d16-d50

Type B) Basic: toolcase equipped with all necessary tool components to install weld-in ports 1/2"-1" and d16-d32 and the possibility to upgrade with d40+d50

Type C) Upgrade kit: kit to upgrade basic tool to complete tool

Type	Voltage	Code	Weight (kg)
A	230 V	799 738 300	20.700
B	230 V	799 738 301	14.100
A	110 V	799 738 302	20.700
B	110 V	799 738 303	14.100
C		799 738 310	7.000



Clamping tool

Double, multi size with universal link

- Recommended for the installation of fittings ELGEF Plus and ecoFIT d40 - 200 and d160 - 630mm
- Recommended for the installation of fittings COOL-FIT d32/D75 - d140/D200 and d160/D250 - d450/D630
- The clamping allows installation without tension and avoids movement during fusion and cooling time
- The centrally located adjustable universal link allows installation of electrofusion couplers, elbows and reducers
- Works above, below and alongside the joint
- Adaptor for use with Tee-pieces available (see accessories)

d (mm)	d1 (mm)	Code	Weight (kg)
40	200	799 301 490	4.200
160	630	799 301 496	14.100

d (mm)	Description	Length (mm)	Width (mm)	Height (mm)
40	Scope of delivery: 2 x V-block, 2 x Straight bar, 1 x Universal link, Transport bag (600x380x250)	900	290	230
160	Scope of delivery: 2 x V-block, 2 x Straight bar, 1 x Universal link, Transport bag (780x780x580)	1300	670	550



Clamping tool Quadruple, multi size with universal link

- Recommended for the installation of fittings ELGEF Plus and ecoFIT d40 - 200 and d160 - 630mm
- Recommended for the installation of fittings COOL-FIT d32/D75 - d140/D200 and d160/D250 - d450/D630
- The clamping allows installation without tension and avoids movement during fusion and cooling time
- The centrally located adjustable universal link allows installation of electrofusion couplers, elbows and reducers
- Universal use; works above, below and alongside the joint
- Adaptor for use with Tee-pieces available (see accessories)

d (mm)	d1 (mm)	Code	Weight (kg)
40	200	799 301 489	8.300
160	630	799 301 495	23.300

d (mm)	Description	Length (mm)	Width (mm)	Height (mm)
40	Scope of delivery: 4 x V-block, 2 x Straight bar, 1 x Universal link	900	290	230
160	Scope of delivery: 4 x V-block, 2 x Straight bar, 1 x Universal link	1300	670	550



Tee adaptor

- Suitable for clamping tool (799301495)

d (mm)	d1 (mm)	Code	Weight (kg)	Description	Length (mm)	Width (mm)	Height (mm)
40	200	799 301 491	0.610	Tee adaptor	600	50	40
160	630	799 301 497	3.500	Tee adaptor	1070	75	60



V-block

- Suitable for clamping tool (799301495)

d (mm)	d1 (mm)	Code	Weight (kg)	Description	Length (mm)	Width (mm)	Height (mm)
40	200	799 301 492	1.000	V-block complete	290	230	65
160	630	799 301 498	3.200	V-block complete	660	430	90



Bar extension

- Suitable for clamping tool (799301495)

d (mm)	d1 (mm)	Code	Weight (kg)	Description	Length (mm)	Width (mm)	Height (mm)
160	630	799 301 499	1.000	Bar extension	1000	40	40

COOL-FIT 4.0 Spare Parts



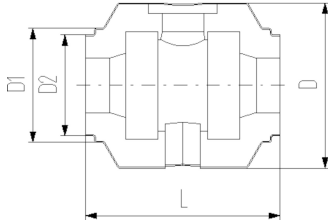
COOL-FIT 2.0/4.0 Insulation for ball valve type 546 / 542

Model:

- Set consisting of half shells and clamps

Note:

Suitable for COOL-FIT ball valve only



d (mm)	D (mm)	DN (mm)	Code	Weight (kg)	D1 (mm)	D2 (mm)	L (mm)
32	135	25	738 990 308	0.160	97	82	152
40	157	32	738 990 309	0.228	117	97	170
50	169	40	738 990 310	0.282	117	97	184
63	204	50	738 990 311	0.498	132	117	227
75	235	65	738 990 312	0.935	147	132	276
90	255	80	738 990 313	1.033	168	147	297



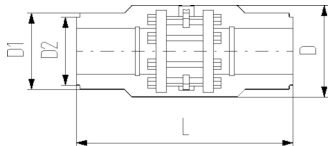
COOL-FIT 2.0/4.0 Insulation for Butterfly Valve Type 567

Model:

- Set consisting of half shells and clamps

Note:

Suitable for COOL-FIT butterfly valve only



d (mm)	D (mm)	DN (mm)	Code	Weight (kg)	D1 (mm)	D2 (mm)	L (mm)
110	310	100	738 990 324	2.054	188	168	556
140	287	125	738 990 326	2.947	233	208	662
160	358	150	738 990 327	3.675	259		720
225	409	200	738 990 330	4.811	325		776



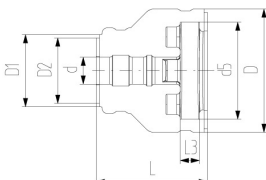
COOL-FIT 2.0/4.0 Insulation for flange adaptor

Model:

- Set consisting of half shells and clamps

Note:

Suitable for COOL-FIT flange adaptor only



d (mm)	D (mm)	DN (mm)	Code	Weight (kg)	D1 (mm)	D2 (mm)	L (mm)	L3 (mm)	d5 (mm)
32	135	25	738 990 458	0.230	90	75	162	26	121
40	170	32	738 990 459	0.340	110	90	165	28	146
50	180	40	738 990 460	0.400	110	90	178	30	156
63	200	50	738 990 461	0.560	125	110	230	32	171
75	220	65	738 990 462	0.650	140	125	232	34	191
90	240	80	738 990 463	0.830	160	140	245	35	206
110	270	100	738 990 464	1.100	180	160	254	36	235
140	300	125	738 990 466	1.140	225	200	299	38	256
160	358	150	738 990 467	1.560	259		332	34	295
225	423	200	738 990 470	2.800	325		383	37	354



COOL-FIT 4.0 Insulation for adaptor fittings PE-metal thread

Model:

- Set consisting of half shells and clamps
- Type A: Female thread RP, NPT, loose nut G
- Type B: Male thread R, NPT
- Type C: Both female and male thread

d (mm)	Code	Weight (kg)	Type
32	738 990 408	0.064	A
32	738 990 418	0.045	B
40	738 990 409	0.083	C
50	738 990 410	0.093	C
63	738 990 411	0.111	C



COOL-FIT 4.0 Insulation for adaptor union PE-PE

Model:

- Set consisting of half shells and clamps

d (mm)	Code	Weight (kg)
32	738 990 428	0.106
40	738 990 429	0.166
50	738 990 430	0.188
63	738 990 431	0.109



COOL-FIT 4.0 Insulation for adaptor union PE-ABS

Model:

- Set consisting of half shells and clamps

d (mm)	Code	Weight (kg)
32	738 990 438	0.088
40	738 990 439	0.107
50	738 990 440	0.126
63	738 990 441	0.178
75	738 990 442	0.374
90	738 990 443	0.493
110	738 990 444	0.597



COOL-FIT 4.0 Insulation for welding indicator-kit

Model:

- Type A suitable for COOL-FIT 4.0 Fittings d32-d110
- Type B suitable for COOL-FIT 4.0 Fittings d160 and coupler d225
- Type C suitable for COOL-FIT 4.0 Fittings d225 except coupler

d (mm)	Code	Weight (kg)	Type	pieces/kit
32 - 110	738 010 052	0.090	A	20
140 - 225	738 010 053	0.200	B	10
225	738 010 054	0.033	C	10



Peeling blade d32-d90

- Suitable for COOL-FIT 2.0/4.0 foam removal and peeling tool (799 738 001)

d (mm)	Code	Weight (kg)
32	799 738 101	0.015
40	799 738 102	0.020
50	799 738 103	0.019
63	799 738 104	0.020
75	799 738 105	0.020
90	799 738 106	0.030



Peeling blade d110-d225

- Suitable for COOL-FIT 2.0/4.0 foam removal and peeling tool (799 738 003)

d (mm)	Code	Weight (kg)
110	799 738 107	0.100
140	799 738 108	0.100
160	799 738 109	0.100
225	799 738 110	0.100



Replacement blade foam separator

- Suitable for COOL-FIT 2.0/4.0 foam removal and peeling tool (799 738 004) and upgrade kit d140-d225 (799 738 013)

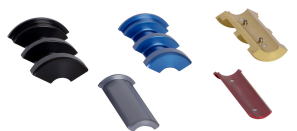
Code	Weight (kg)	Suitable for
799 738 115	0.100	799 738 004
799 738 117	0.080	799 738 013



O-Ring for clamping shoe

- Suitable for COOL-FIT 2.0/4.0 foam removal and peeling tool (799 738 001 and 799 738 003)

d (mm)	Code	Weight (kg)
32	799 738 050	0.003
110	799 738 051	0.010



Clamping shoe d32-d90

- Suitable for COOL-FIT 2.0/4.0 foam removal and peeling tool (799 738 001)

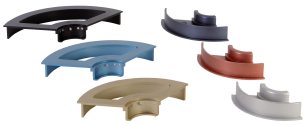
d (mm)	Code	Weight (kg)	Colour
32	799 738 020	0.240	silver
40	799 738 021	0.090	red
50	799 738 022	0.210	anthracite
63	799 738 023	0.120	gold
75	799 738 024	0.270	blue
90	799 738 025	0.480	black



Clamping shoe d110-d225

- Suitable for COOL-FIT 2.0/4.0 foam removal and peeling tool (799 738 003)
- Type A: Spindle start
- Type B: With pipe stop

d (mm)	Code	Weight (kg)	Colour	Type
110	799 738 026	0.680	silver	
140	799 738 027	0.480	red	A
140	799 738 037	0.480	red	B
160	799 738 028	0.580	anthracite	A
160	799 738 038	0.580	anthracite	B
225	799 738 029	0.600	gold	A
225	799 738 039	0.600	gold	B



Clamping shoe d250-d450, SDR17

- Suitable for COOL-FIT 2.0/4.0 foam removal and peeling tool (799 738 004)
- Type A: Spindle start
- Type B: With pipe stop

d (mm)	Code	Weight (kg)	Colour	Type
250	799 738 042	0.240	silver	A
250	799 738 052	0.240	silver	B
280	799 738 043	0.265	red	A
280	799 738 053	0.315	red	B
315	799 738 044	0.300	anthracite	A
315	799 738 054	0.350	anthracite	B
355	799 738 045	0.370	gold	A
355	799 738 055	0.430	gold	B
400	799 738 046	0.450	blue	A
400	799 738 056	0.520	blue	B
450	799 738 047	0.550	black	A
450	799 738 057	0.600	black	B



Clamping shoe d110-d225

- Suitable for COOL-FIT 2.0/4.0 foam removal and peeling tool (799 738 003)
- Suitable for COOL-FIT 2.0/4.0 foam removal and peeling tool (799 738 015)
- Type A: Spindle start
- Type B: With pipe stop
- Delivery unit: 1 piece (3 pieces are required for complete circumference)

d (mm)	Type	Code	Weight (kg)	Colour	SDR
110		799 738 026	0.680	silver	SDR11
140	A	799 738 027	0.480	red	SDR11
140	B	799 738 037	0.480	red	SDR11
160	A	799 738 028	0.580	anthracite	SDR17
160	B	799 738 038	0.580	anthracite	SDR17
160	A	799 738 121	0.580	anthracite	SDR11
160	B	799 738 122	0.580	anthracite	SDR11
225	A	799 738 029	0.600	gold	SDR17
225	B	799 738 039	0.600	gold	SDR17
225	A	799 738 123	0.600	gold	SDR11
225	B	799 738 124	0.600	gold	SDR11



Clamping shoe d110-d225

- Suitable for COOL-FIT 2.0/4.0 foam removal and peeling tool (799 738 003)
- Suitable for COOL-FIT 2.0/4.0 foam removal and peeling tool (799 738 015)
- Type A: Spindle start
- Type B: With pipe stop
- Delivery unit: 1 piece (3 pieces are required for complete circumference)

d (mm)	Type	Code	Weight (kg)	Colour	SDR
110		799 738 026	0.680	silver	SDR11
140	A	799 738 027	0.480	red	SDR11
140	B	799 738 037	0.480	red	SDR11
160	A	799 738 028	0.580	anthracite	SDR17
160	B	799 738 038	0.580	anthracite	SDR17
160	A	799 738 121	0.580	anthracite	SDR11
160	B	799 738 122	0.580	anthracite	SDR11
225	A	799 738 029	0.600	gold	SDR17
225	B	799 738 039	0.600	gold	SDR17
225	A	799 738 123	0.600	gold	SDR11
225	B	799 738 124	0.600	gold	SDR11



Circular blade

- Suitable for COOL-FIT 2.0/4.0 foam removal and peeling tool (799 738 001 and 799 738 003)

Code	Weight (kg)
799 738 040	0.008



Circular blade-Set

- Suitable for COOL-FIT 2.0/4.0 foam removal and peeling tool (799738001 and 799738003)
- Consists of: Circular blade, holder and screw

d (mm)	Code	Weight (kg)
32 - 90	799 738 048	0.025
110 - 225	799 738 049	0.025



Saw blade rotary saw

- Suitable for COOL-FIT 2.0/4.0 foam removal and peeling tool (799 738 004)

Code	Weight (kg)
799 738 114	0.010



Saw

- Suitable for COOL-FIT 2.0/4.0 foam removal and peeling tool (799 738 003)

d (mm)	Code	Weight (kg)
140 - 225	799 738 060	1.000



Saw blade

- Suitable for COOL-FIT 2.0/4.0 foam removal and peeling tool (799 738 003)

d (mm)	Code	Weight (kg)
140 - 225	799 738 061	0.029



Locking pin

- Suitable for COOL-FIT 2.0/4.0 foam removal and peeling tool (799 738 004)

Code	Weight (kg)
799 738 116	0.250



Spare blades for deburring tool

- 10 pieces

Code	SP	Weight (kg)
790 205 083	1	0.031

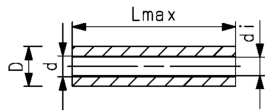
COOL-FIT 4.0 Push System Pipes and Fittings



COOL-FIT 4.0 Push System, Pipe bar

Model:

- Pre-insulated multilayer (PE-RT/AL/PE-RT) pipe, metric
- Closed cell insulation based EPDM with polyester wire mesh for mechanical protection
- Colour: black



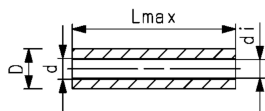
d	D	DN	PN	Code	Weight	di	L	closest inch
(mm)	(mm)	(mm)	(bar)		(kg)	(mm)	(mm)	(inch)
25	78	20	16	738 173 007	0.888	20	5000	3/4
32	85	25	16	738 173 008	1.037	26	5000	1



COOL-FIT 4.0 Push System, Pipe coiled

Model:

- Pre-insulated multilayer (PE-RT/AL/PE-RT) pipe, metric
- Closed cell insulation based EPDM with polyester wire mesh for mechanical protection
- Colour: black



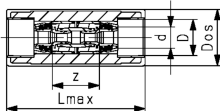
d	D	DN	PN	Code	Weight	di	L	closest inch
(mm)	(mm)	(mm)	(bar)		(kg)	(mm)	(mm)	(inch)
25	78	20	16	738 173 057	0.893	20	25000	3/4



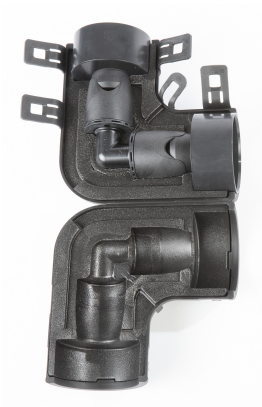
COOL-FIT 4.0 Push System, Coupler

Model:

- Push fitting made of high-performance plastic PPSU
- Custom fit insulation shell of XPE with TPE jacket
- Colour: black
- Package contents: 1x module, 2x adaptors, 2x compression rings and insulation half shells



d	D	DN	PN	Code	Weight	Dos	Lmax	z
(mm)	(mm)	(mm)	(bar)		(kg)	(mm)	(mm)	(mm)
25	78	20	16	738 913 007	0.533	100	212	72
32	85	25	16	738 913 008	0.483	100	212	72

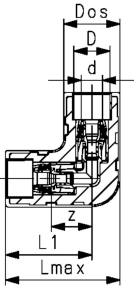


COO-FIT 4.0 Push System, Elbow 90°

Model:

- Push fitting made of high-performance plastic PPSU
- Insulation shell of XPE with TPE jacket
- Colour: black
- Package contents: 1x module, 2x adaptors, 2x compression rings and insulation half shells

d	D	DN	PN	Code	Weight	Dos	Lmax	L1	z
(mm)	(mm)	(mm)	(bar)		(kg)	(mm)	(mm)	(mm)	(mm)
25	78	20	16	738 103 007	0.577	100	182	132	62
32	85	25	16	738 103 008	0.551	100	182	132	62



COOL-FIT 4.0 Push System, T90° equal

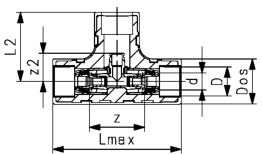
Model:

- Push fitting made of high-performance plastic PPSU
- Insulation shell of XPE with TPE jacket
- Colour: black
- Package contents: 1x module, 2x adaptors, 2x compression rings and insulation half shells

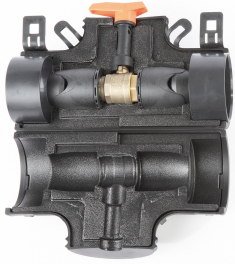
Note:

Additional COOL-FIT 4.0 Push System, Adaptor kit 738903057 or 738903058 needed

d	D	DN	PN	Code	Weight	Dos	Lmax	L2	z	z2
(mm)	(mm)	(mm)	(bar)		(kg)	(mm)	(mm)	(mm)	(mm)	(mm)
25/25-32/25	78	20	16	738 203 007	0.702	100	246	132	106	54
32/25-32/32	85	25	16	738 203 008	0.676	100	246	132	106	54



COOL-FIT 4.0 Push System Valves

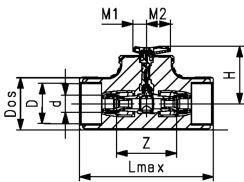


COOL-FIT 4.0 Push System, Ball valve

Model:

- Ball valve with spindle extension
- Insulation shell of XPE with TPE jacket
- Colour: black
- Package contents: 1x ball valve, 2x adaptor, 2x compression ring and insulation half shells

d (mm)	D (mm)	DN (mm)	PN (bar)	kv-value ($\Delta p=1$ bar) (l/min)	Code	Weight (kg)	Dos (mm)	H (mm)	Lmax (mm)	M1 (mm)	M2 (mm)	z (mm)
25	78	20	16	29.5	138 983 007	1.094	100	111	246	26	41	116
32	85	25	16	29.5	138 983 008	1.068	100	111	246	26	41	116



COOL-FIT 4.0 Push System, Flow control valve Both sides connection with iFIT

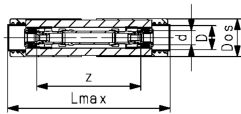
Model:

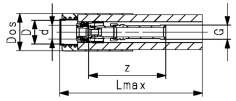
- Flow control valve made of brass, impact resistant plastic and EPDM seals
- Insulation made of NBR and shells of TPE
- Both sides connection to COOL-FIT 4.0 Push System
- Measuring range: 8.0 – 30.0 (l/min)
- Measuring accuracy: $\pm 10\%$ of the displayed value
- Package contents: 1x valve, 2x adaptors, 2x compression rings, 1x insulation shell

Note:

The use of antifreeze agents changes the viscosity and density of the medium. Depending on the proportion added, the actual flow rate therefore deviates from the displayed flow rate. Please contact GF for further information

d (mm)	D (mm)	DN (mm)	PN (bar)	kv-value ($\Delta p=1$ bar) (l/min)	Code	Weight (kg)	Dos (mm)	Lmax (mm)	z (mm)
25	78	20	10	83.3	138 983 027	1.346	100	374	239
32	85	25	10	83.3	138 983 028	1.328	100	374	239





COOL-FIT 4.0 Push System, Flow control valve
One free end with iFIT

Model:

- Flow control valve made of brass, impact resistant plastic and EPDM seals
- Insulation made of NBR and shells of TPE
- One side connection to COOL-FIT 4.0 Push System
- One side connection with thread
- Measuring range: 8.0 – 30.0 (l/min)
- Measuring accuracy: ±10% of the displayed value
- Package contents: 1x valve, 1x adaptor, 1x compression ring, 1x insulation shell

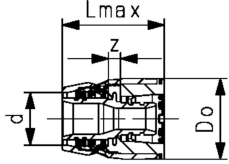
Note:

The use of antifreeze agents changes the viscosity and density of the medium. Depending on the proportion added, the actual flow rate therefore deviates from the displayed flow rate. Please contact GF for further information

d (mm)	D (mm)	Thread	Type	Size (inch)	DN (mm)	PN (bar)	kv-value ($\Delta p=1$ bar) (l/min)	Code	Weight (kg)
25	78	G		1	20	10	83.3	138 983 017	0.865
32	85	G		1	25	10	83.3	138 983 018	0.852

d (mm)	D (mm)	Dos (mm)	Lmax (mm)	z (mm)
25	78	100	332	180
32	85	100	332	180

COOL-FIT 4.0 Push System Accessories



COOL-FIT 4.0 Push System, Adaptor kit

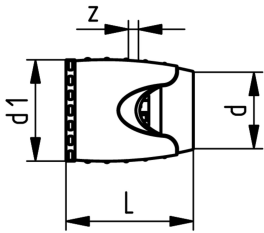
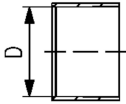
Model:

- Adapter made of high-performance plastic PPSU
- Compression ring made of PP-H
- Package contents: 1x adaptor, 1x compression ring

Note:

Additionally needed for COOL-FIT 4.0 Push System, T 90° equal

d (mm)	D (mm)	DN (mm)	PN (bar)	Code	Weight (kg)	Do (mm)	Lmax (mm)	z (mm)
25	78	20	16	738 903 057	0.119	44	62	7.5
32	85	25	16	738 903 058	0.106	50	63	7.5



iFIT Adaptor PPSU

- Material: PPSU, PA

d (mm)	d1 (mm)	Code	SP	Weight (kg)	L (mm)	z (mm)
25	45	762 101 034	5	0.070	62	8
32	52	762 101 035	5	0.085	63	8

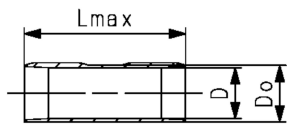


COOL-FIT 4.0 Push System, Pipe shell

Model:

- Shell for easy installation in standard pipe clips

d (mm)	D (mm)	Do (mm)	Code	Weight (kg)	Lmax (mm)
25	78	86	738 013 007	0.133	200
32	85	93	738 013 008	0.144	200

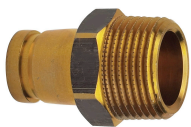
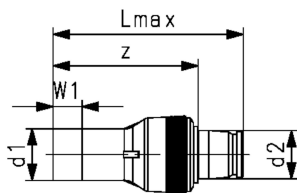


COOL-FIT 2.0/4.0 Adaptor fitting PE/iFIT

Model:

- Spigot fitting PE100 SDR11, metric with free end
- Push system module brass

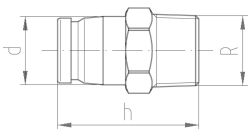
d1 (mm)	d2 (mm)	DN (mm)	SDR	PN (bar)	Code	SP	Weight (kg)	Lmax (mm)	W1 (mm)	z (mm)
32	25/32	25	11	16	738 950 058	1	0.219	115	36	87

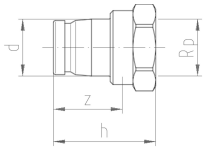
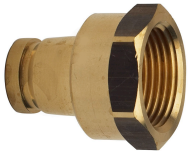


iFIT Transition module brass With male thread

- Material: brass, dezincification resistant
 - Connection: male thread
- *as long as stock last

	d (mm)	Thread	Type	Size (inch)	Code	SP	Weight (kg)	h (mm)
*	25 - 32	R		3/4	762 101 277	2	0.135	51
*	25 - 32	R		1	762 101 278	2	0.175	55

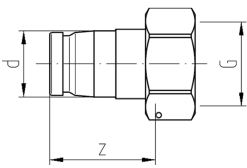
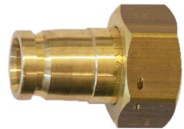




iFIT Transition module brass
With female thread

- Material: brass, dezincification resistant
 - Connection: female thread
- *as long as stock last

	d (mm)	Thread Type	Size (inch)	Code	SP	Weight (kg)	h (mm)	z (mm)
*	25 - 32	Rp	¾	762 101 279	2	0.127	45	31
*	25 - 32	Rp	1	762 101 280	2	0.175	49	32



iFIT Transition union module brass
With flat sealed

- Material: brass, dezincification resistant
- Supplied with: sealing

	d (mm)	Thread Type	Size (inch)	Code	SP	Weight (kg)	z (mm)
25 - 32		G	¾	762 101 281	2	0.155	48
25 - 32		G	1	762 101 282	1	0.179	55
25 - 32		G	1 ¼	762 101 283	1	0.251	48
25 - 32		G	1 ½	762 101 284	1	0.357	50

COOL-FIT 4.0 Push System Tools



iFIT Tool set for ML- and PB pipes plastic

d16 / d20 with pipe scissor, d25 / d32 with pipe cutter

d (mm)	Code	SP	Weight (kg)
25 / 32	762 101 133	1	1.371



iFIT Chamfering tool for ML- and PB pipes

- Material: steel, plastic

d (mm)	Code	SP	Weight (kg)
25	762 101 125	1	0.252
32	762 101 132	1	0.323



iFIT plastic pipe cutter For ML- and PB pipes d16-d32

d (mm)	Code	SP	Weight (kg)
16 - 32	762 101 117	1	0.386
Spare blades	762 101 118	1	0.005



iFIT Chamfering tool to battery tools metal

d (mm)	Code	SP	Weight (kg)
25	762 101 353	1	0.252
32	762 101 354	1	0.323



iFIT Grab rail set metal

d (mm)	Code	SP	Weight (kg)
16 - 32	762 101 361	1	0.050

Local support around the world

Visit our webpage to get in touch with your local specialist:

www.gfps.com/our-locations



The information and technical data (altogether "Data") herein are not binding, unless explicitly confirmed in writing.
The Data neither constitutes any expressed, implied or warranted characteristics, nor guaranteed properties or a guaranteed durability. All Data is subject to modification. The General Terms and Conditions of Sale of Georg Fischer Piping Systems apply.