



Media release

Schaffhausen

11 October 2022

Bridging big to small dimensions: The new COOL-FIT 2.0 Push System

COOL-FIT 2.0 from GF Piping Systems has already changed how you plan, install and operate cooling applications. The pre-insulated plastic piping system is corrosion- and condensation-free and can be installed in cooling applications in commercial and residential construction, data centers, or process cooling. Thanks to the COOL-FIT 2.0 Push System, it now becomes a complete solution: Additional dimensions cover the last meter between the main pipeline and the HVAC unit, leading to higher energy efficiency and a more reliable operation.

HVAC technology is becoming increasingly important. The number of air conditioning units in buildings is estimated to reach 5,6 billion by 2050 due to climate change and rising population numbers¹. At the same time, high-tech industries rely on HVAC for process cooling applications, such as data centers or manufacturing. As a result, the need to reduce CO₂ and greenhouse gas emissions is greater than ever.

GF Piping Systems has addressed this challenge by developing a pre-insulated 3-in-1 piping system for chilled water, including pipes, fittings, valves, and tools. This complete system has seen use in comfort cooling and a broad range of commercial and industrial applications. Customers have previously relied on pressed and welded metal systems or post-insulated polyethylene pipes to cover the last meter between COOL-FIT 2.0 and the cooling unit.

The COOL-FIT 2.0 Push System now bridges the gap by extending the product range with smaller dimensions. Designed for temperatures between +5° C and +60°C, it includes sizes from d16 to d32. Based on the proven iFIT range from GF Piping Systems, the COOL-FIT 2.0 Push System offers an easy plug-and-play installation thanks to mechanical connections, bendable pipes, and modular adapter technology.

Made of lightweight materials, COOL-FIT 2.0 is a corrosion- and maintenance-free alternative to metal piping systems. Furthermore, these material properties mean that the system can operate for 25 years without interruption. Its 3-in-1 design (consisting of pipe, insulation, and robust jacket) combined with efficient and easy jointing technology results in a 50% faster installation time than post-insulated metal pipes. Due to pre-insulation and the use of plastic, COOL-FIT 2.0 also minimizes pressure losses and has low thermal conductivity, making the system 30% more energy efficient.

"We have already shown that plastic piping systems are a long-lasting, easy-to-install, and high-performing solution for a wide range of cooling applications," says Kevin Blumberg, Senior Business Development Manager - Cooling. "Introducing the COOL-FIT 2.0 Push System is an important step forward; we can now bridge the gap to the cooling unit for our customers. COOL-FIT is a complete solution for confident and safe insulation that makes commercial and industrial cooling more energy efficient."

¹ <https://www.ccacoalition.org/en/initiatives/hfc>

For further information, please contact:

Constanze Werdermann, Global PR Manager

constanze.werdermann@georgfischer.com

+41 76 33 99 218

GF Piping Systems

As the leading flow solutions provider for the safe and sustainable transport of fluids, GF Piping Systems creates connections for life. The division focuses on industry-leading leak-free piping solutions for numerous demanding end-market segments. Its strong focus on customer-centricity and innovation is reflected by its global sales, service, and manufacturing footprint and its award-winning portfolio, including fittings, valves, pipes, automation, fabrication, and jointing technologies.

GF Piping Systems has its own sales companies in 31 countries, which means it is always by its customers' side. Production sites in 36 locations in America, Europe, and Asia ensure sufficient availability and quick, reliable delivery. In 2021, GF Piping Systems generated sales of CHF 1'971 million and employed 7'686 people. GF Piping Systems is a division of Georg Fischer AG, founded in 1802 and headquartered in Schaffhausen, Switzerland.

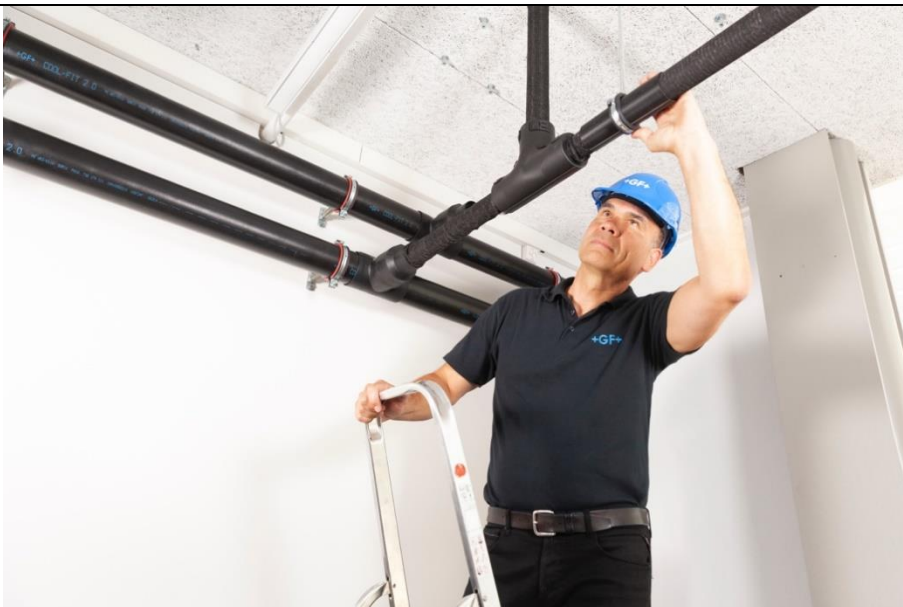
www.gfps.com

Pictures



The new COOL-FIT 2.0 Push System bridges the gap between the main pipeline and the cooling unit by extending the COOL-FIT range with smaller piping dimensions.

Source: GF Piping Systems



The COOL-FIT 2.0 Push System offers an easy plug-and-play installation thanks to mechanical connections, bendable pipes, and modular adapter technology.

Source: GF Piping Systems