

Local support around the world

Visit our webpage to get in touch with your local specialist:
www.gfps.com/our-locations



The information and technical data (altogether "Data") herein are not binding, unless explicitly confirmed in writing.
The Data neither constitutes any expressed, implied or warranted characteristics, nor guaranteed properties or a guaranteed durability. All Data is subject to modification. The General Terms and Conditions of Sale of Georg Fischer Piping Systems apply.

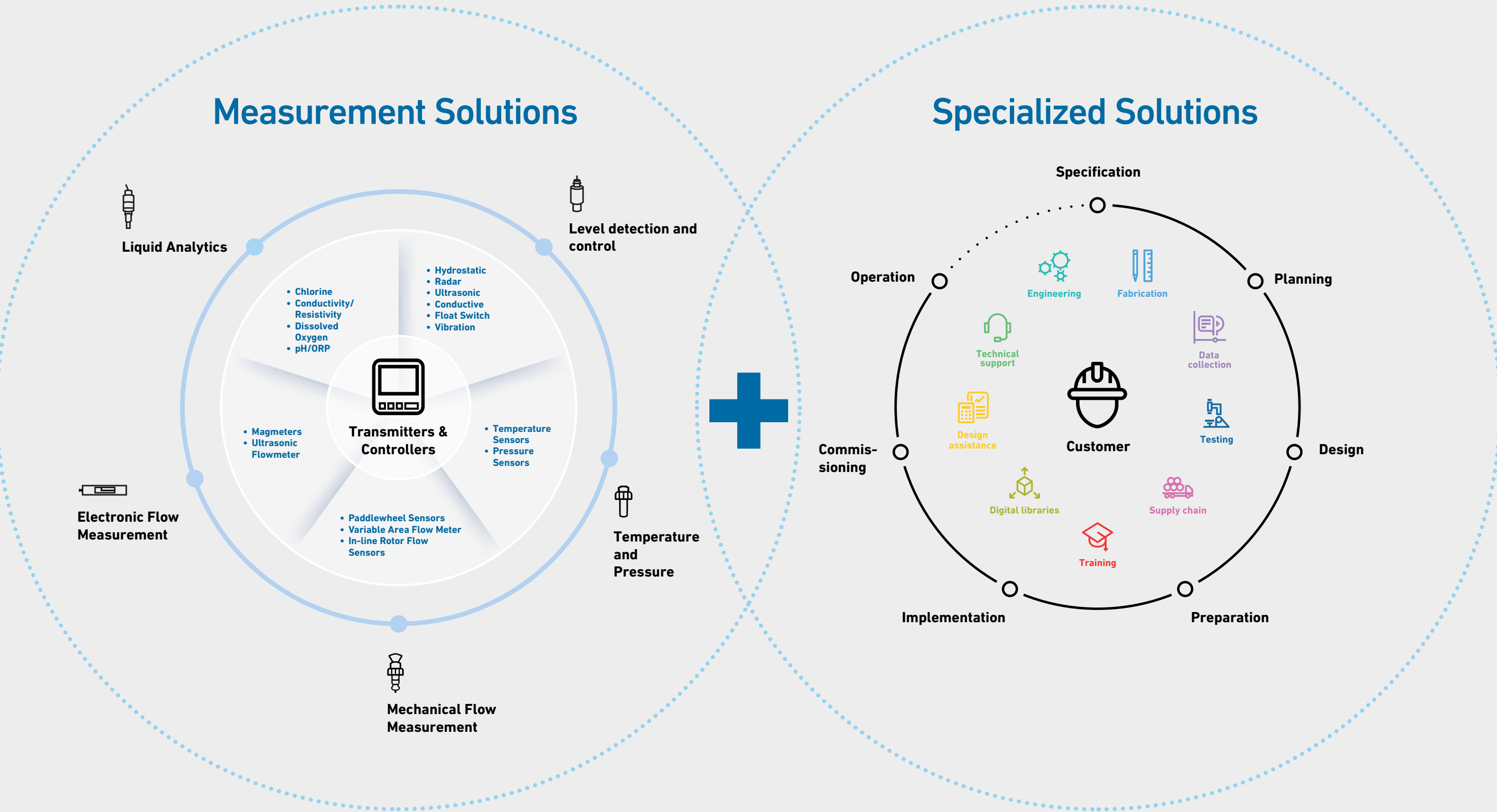
Unseen insights

Empowering liquid processes with trusted analytical solutions



We can solve it together

GF Piping Systems offers a comprehensive portfolio of measurement and control solutions, tailored to meet the specific needs of your water systems. By leveraging our specialized, customer-centric approach, we can help you build the most effective solutions. Through a collaborative partnership, our team of experts will work closely with your internal stakeholders to identify challenges and develop customized solutions that address your unique requirements.



Trust the leaders

The value of partnering with GF

GF Piping Systems has been at the forefront of analytical sensor design, production, and testing in Southern California.

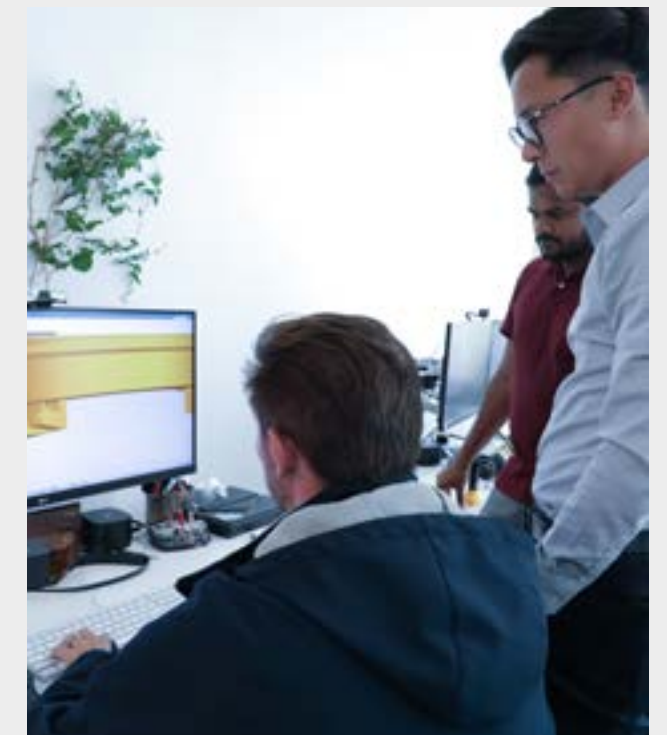


Our interdisciplinary teams of engineers, physicists, and chemists collaborate to deliver high-quality sensors made in the United States.

Choose from materials like PEEK, PPE, PP, and PVDF to find the optimal solution for your specific media.



Our sensors undergo rigorous testing before leaving the factory, ensuring reliability and trust in every product. For added convenience, we offer certified sensors which are pre-calibrated at our California-based facility.



Need assistance? As a global company, we're committed to supporting you, no matter where you or your customers are. Our regional centers provide repair and support services, while our team of experts specializes in tailoring customized solutions for your unique application.

Suitable for your application

Rugged reliability

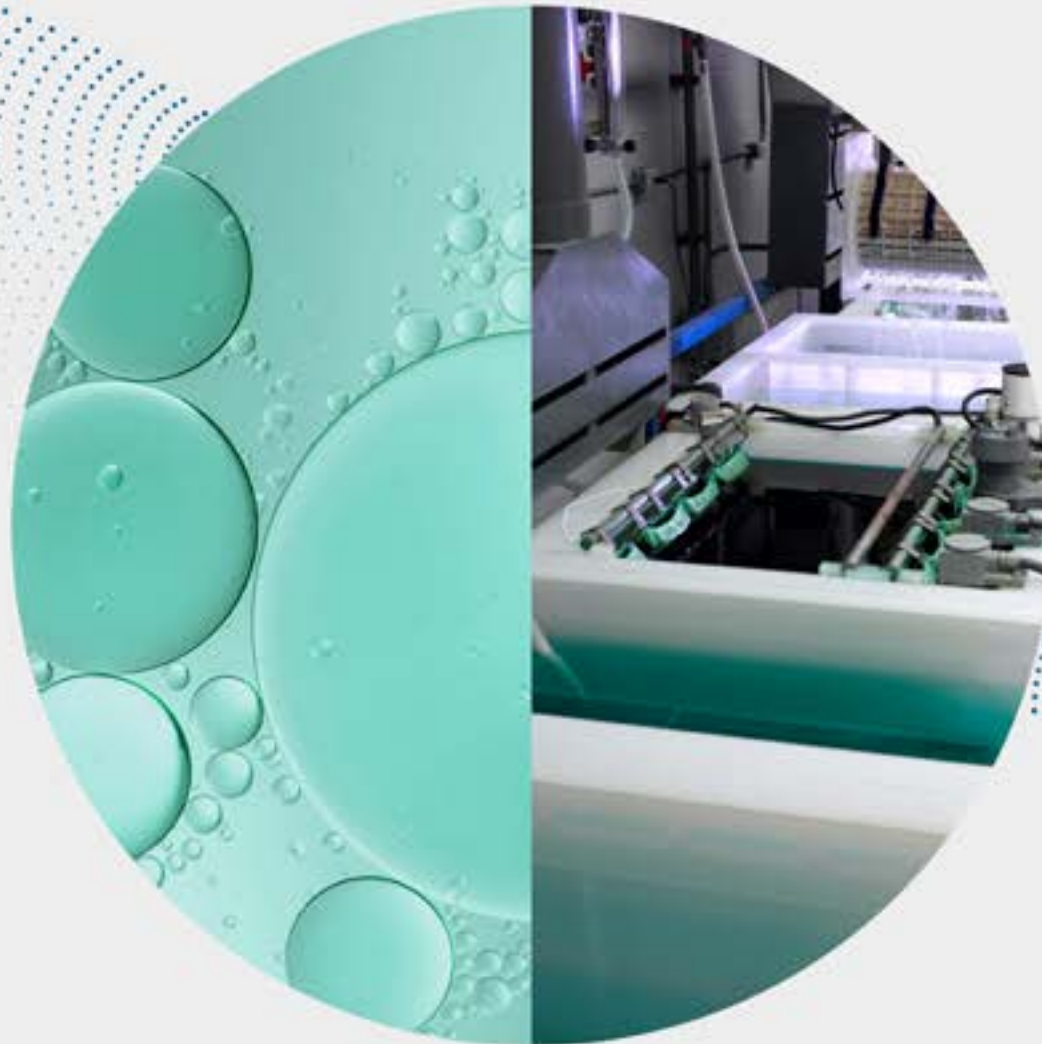
GF Piping Systems recognizes the importance of your liquid. Our products are designed with in-line installation in mind, allowing for seamless integration into new or existing systems. Ruggedly designed, our sensors are built to withstand even the harshest environments, for longevity and reliability.



**Our portfolio includes:
Conductivity, pH/ORP,
Dissolved Oxygen (DO),
chlorine digital sensors.**

Our analytical sensors excel in diverse applications, offering the flexibility and reliability required for water treatment, industrial processes, and environmental monitoring. Designed for longevity, our sensors provide exceptional value and precision which is trusted globally.

Want to increase your yield? We can solve that together.



As a chemical application professional, you understand the critical role of precise pH measurement and control. Achieving high-quality, consistent results is paramount to ensure product integrity and meet industry standards. Our robust pH sensors excel even in challenging environments, providing reliable performance.

Designed for high accuracy and stability, our solutions help maintain desired chemical compositions and reaction conditions. The real-time data from our sensors enables precise control and chemical dosages, improving process efficiency, reducing waste, and enhancing plant safety.

Applications supported

- Etching passivation
- Chemical dosing monitoring
- Acid and caustic concentration control
- Cleaning (acid/ alkaline)

Product highlight



pH / ORP

pH Measurement for optimal performance

Our pH sensors feature Drylock connectors with corrosionresistant gold-plated contacts and materials that withstand corrosive environments while protecting against chemical vapor and humidity ingress. The PPS body helps ensure broad chemical compatibility, and the HF-resistant glass is designed for challenging wet chemical applications. These features provide unmatched accuracy and durability, making our pH sensors ideal for optimizing your processes.

Conductivity sensors for performance and longevity

Suitable for a wide range of applications, our conductivity sensors offer precise measurement from high purity water in upstream processes to chemically polluted water in downstream processes. With process connections made from chemically resistant materials, our sensors ensure longevity and reliable performance in aggressive environments. This durability reduces maintenance needs and saves costs by minimizing sensor replacements due to corrosion.

Struggling to accurately monitor your upstream and downstream processes?

We can solve that together.



Applications supported

- Rinsing baths
- Ion exchange
- Membrane processes
- Water treatment
- Dilution

Product highlight



You know the critical demands of process water applications, particularly high purity water from upstream processes. Rigorous control and monitoring of water quality in the upstream phase needed to ensure operational integrity. Our analytical portfolio includes conductivity sensors with multiple cell constants to accurately measure varying contaminant levels across different stages in your process.

In process water applications, several important parameters must be monitored, with conductivity being one of the most critical.

Conductivity and temperature accuracy for water quality

At GF Piping Systems, our conductivity sensors provide unparalleled precision and reliability. Offered with factory calibrated NIST traceability certificates, our sensors are among the most accurate on the market. High precision platinum temperature sensors provide precise temperature measurement and compensation, enhancing overall accuracy.

These features offer significant benefits, including increasing yield and uptime. Reliable measurements help prevent bad batches, ensuring consistent product quality. Precise control over process conditions improves operational efficiency and reduces downtime.

Want peace of mind that your system is running efficiently? We can solve that together.



You have a meticulously engineered solution that meet the unique demands of your wastewater process. GF Piping Systems offers cutting-edge pH/ORP and conductivity sensors, essential for maintaining optimal pH levels in wastewater systems. Our sensors enable precise monitoring and accurate data recording to seamlessly help comply with local regulatory standards.

Our sensors deliver accurate and reliable measurements, helping ensure optimal performance in your wastewater treatment and reclaim processes.

Applications supported

- Fume scrubber
- Industrial waste water reclaim
- Neutralization
- Environmental discharge

Product highlight



pH / ORP

Precision pH measurement

Featuring enhanced reference formulation to resist chemical poisoning, our sensors experience extended life in harsh environments. This design allows for reliable readings for regulatory compliance and effective neutralization, saving on chemical usage and costs. Additionally, the extended sensor life reduces the need for frequent replacements, providing significant cost savings for customers.

Flexible and seamless conductivity measurement

Our conductivity sensors offer flexible installation options, including easy outdoor setups with the GF 2850 and immersion types. Digital communication minimizes interference, even with longer cables. This seamless integration with other equipment ensures compatibility and interoperability within existing processes, enhancing user convenience, and simplifying system setup and management.

Long service life ORP measurement

2744 ORP series offers longer service life and reliable measurement in harsh environments. Key features include a protected reference electrode, a field-serviceable design with a refillable electrolyte chamber, and a replaceable salt bridge. The patented PTFE reference junction resists fouling and chemical attack. All these features contribute to sensor longevity and longterm cost savings.

Need to maintain water quality to support aquatic life?

We can solve that together.

Your daily challenges revolve around preventing waste accumulation, curbing algae proliferation, and mitigating oxygen stress for your aquatic life. At GF Piping Systems, we offer precise measurements for crucial parameters in a variety of aquatic applications, including aquariums, fish farms, and swimming pools. Our highly accurate sensors have been trusted by aquatic life professionals globally to sustain aquatic life.

Maintaining a balanced aquatic environment is crucial for the health of aquatic life and operational efficiency. Aquatic applications require fast response and accurate measurement. GF Piping Systems provides advanced solutions for precise monitoring of key water quality parameters, leading to reduced chemical use, improved water quality, and significant cost savings for customers.



Applications supported

- RO treatment
- Exhibit and system water quality
- Makeup water generation
- Incoming water supply

Product highlight



pH / ORP Conductivity Dissolved Oxygen (DO)

Efficient salinity monitoring with conductivity sensors

GF Piping Systems offers a variety of conductivity sensors for salinity measurement, including submersible sensors for tanks and inline sensors for maximum system integration. Our digital sensors avoid interference from long cables or nearby electromagnetic fields, ensuring accurate readings. Additionally, up to six conductivity sensors can connect to a six-channel 9950 transmitter, reducing startup costs and enhancing efficiency.

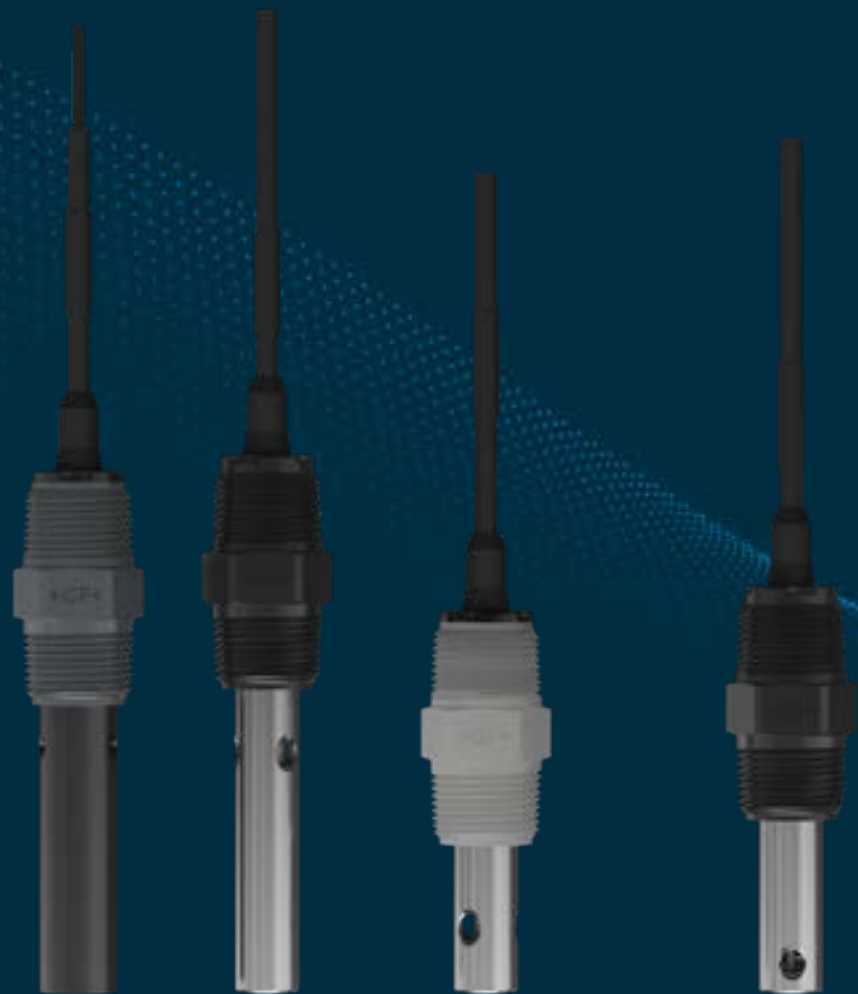
Advanced dissolved oxygen measurement

Our optical dissolved oxygen (DO) sensors eliminate the need for electrolyte changes and come factory pre-calibrated, requiring no field calibration. This ensures faster startup and significantly reduces maintenance efforts. Features include a 10m cable with stripped and tinned ends and a titanium temperature sensor for better compatibility in saltwater applications.

ORP monitoring with wet-tap assembly

With our wet-tap assembly, our Oxidation-Reduction Potential (ORP) electrode can be installed and removed under pressure without shutting down operations, essential for continuous aquatic applications. The patented SafeLoc mechanism and short stroke design ensure safety. The unit mounts at any angle and is compatible with GF DryLoc electrodes, enhancing installation flexibility.

Conductivity



As a leader in plastic piping, GF Piping Systems offers a complete portfolio of conductivity probes in multiple plastic materials. As a single-source provider we offer customizations such as extended cable lengths, fittings, and tees.

Our digital conductivity sensors can be paired with sensor electronics are available in various configurations for maximum installation flexibility. They seamlessly connect to all GF transmitters which automatically detect the sensors upon set up.

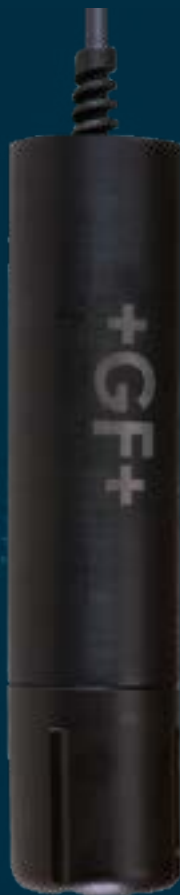
pH/ORP



Our pH and ORP electrodes come equipped with memory chips, streamlining data storage. Our patented DryLoc® connector boasts corrosion-resistant, gold-plated contacts, ensuring a robust connection to sensor electronics. The durable housing protects against mechanical damage and maintains compatibility with a wide range of chemicals. Additionally, the dirt-repellent PTFE junction and specialized glass allow for accuracy and longevity.

The GF 2751 pH/ORP smart sensor electronics take efficiency further, offering improved diagnostics, performance, and convenience. With field-free calibration, reduced system downtime, and automatic health checks, you can focus on maintaining your processes without unnecessary interruptions or time-consuming maintenance.

Dissolved oxygen (DO)



The GF 2610 RDO® sensor is a rugged, reliable sensor designed to deliver accurate dissolved oxygen (DO) data across a wide measuring range while reducing maintenance costs.

Optical DO measurement, no flow requirements

Resists abrasion and bleaching, allowing for a long life in many harsh applications.

Flexible communications

The sensor has a built-in Modbus RS485 and 4 to 20 mA current loop outputs for easy interfacing with existing control systems.

Rugged construction

Titanium temperature sensor for improved compatibility in salt-water applications.

Chlorine



The GF Chlorine Analyzer Systems are an integrated, all-in-one Chlorine Panel System designed to measure Free Chlorine or Chlorine Dioxide in drinking water and clean, fresh water treatment applications.

Built-in flow regulator

Enables system installation into any service line with a pressure range from 1 to 8 bars (15 to 120 psi).

Quick and easy installation

The unique, integrated clear flow cell combines sensors, flow regulator, filter and variable area flow indicator in one compact unit.

Reagent-free measuring

Reagent-free measuring offers many benefits, including no hazardous waste stream to drain, no monthly cost of reagents, no bi-yearly pump tubing replacement costs, lower water usage and immediate update of chlorine levels vs updates every four minutes compared to competitor units.

Transmitters



GF transmitters come in single, dual and six-channel options and are available as a panel or field mount. They support GF flow, pH/ORP, conductivity/resistivity, salinity, temperature, pressure, level, dissolved oxygen and devices that transmit a 4 to 20 mA signal with the use of the 8058 iGo® single channel converter.

Sensor electronics



pH Smart Sensor Electronics
Our pH Smart Sensor Electronics offer vastly improved diagnostics, performance and convenience while ensuring maximum process and data integrity.

Conductivity/Resistivity Sensor Electronics
Conductivity/Resistivity Sensor Electronics are available in various configurations for maximum installation flexibility and are also compatible with all GF conductivity electrodes.

Together as one

Process automation

The water treatment market faces several critical issues: increasing urbanization and global warming resulting in one of the biggest concerns, namely water scarcity. Process Automation has an integral role in the growing needs of water conservation.



We use our knowhow and experience of the complete control loop to solve the entire process challenge. Enabling the design, selection and installation of Process Automation systems. With Process Automation, GF Piping Systems can supply every customer not just with highest quality parts but with an interoperable all-in-one solution.

One user experience across the whole control loop

GF Piping Systems is your experienced partner with a full portfolio of measurement, control, and actuation components, which are easy to install and use and have local support through all project phases. We offer the full package with our products and solutions, providing top-quality installation, a highly skilled team of experts standing by our customers' side every step of the way worldwide, and digitalized services ensuring a project is at the forefront of the market.



Design (Planning phase)

Easy planning thanks to application-specific solutions making an effortless combination around the complete control loop.



Select (Ordering phase)

Easy to select and order via configurators and matching components throughout the whole portfolio.



Install (Building phase)

Easy planning thanks to application-specific solutions making an effortless combination around the complete control loop.



Own (Operation phase)

Easy monitoring once installed, including spare part availability. Long lifetime and low maintenance make for low downtimes.