

A landscape photograph showing several white wind turbines scattered across rolling green hills under a clear blue sky. The scene is bright and sunny, with shadows cast by the turbines and the terrain.

Zurich, 27 March 2023

Going forward creating an impact

Andreas Müller, CEO | Mads Joergensen, CFO

The vision is our true north

A sustainability
and innovation leader
providing superior
customer value



GF has a long history of social & environmental commitments and contributions ...

1867
1st health & accident insurance;
45y before mandatory in CH



1868
Workmen's house



1880
One of the first canteens in CH



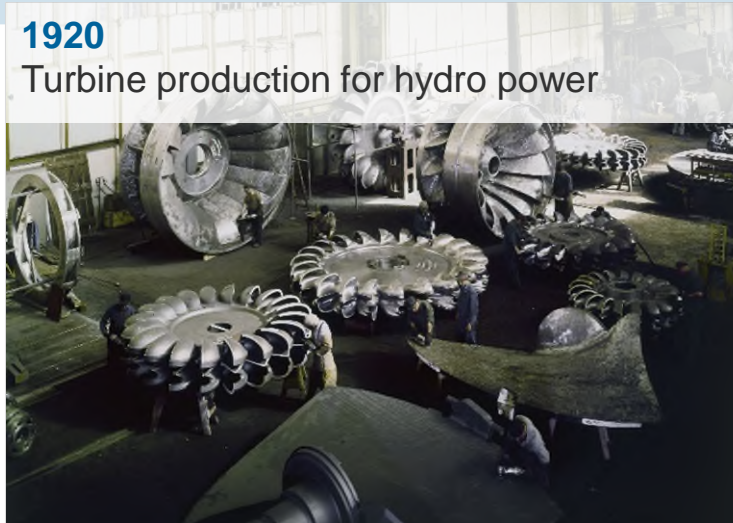
1918
Apprentice training



1918
Paradise estate – Workmen's housing and catering



1920
Turbine production for hydro power



1941-45
Scrap collection & recycling



... and sustainability has become an integral part of our strategy



Product Portfolio



70%

of sales with social or environmental benefits



Climate & Resources



30%

SBT absolute CO₂ emissions footprint (Scope 1 and 2) reduction



People & Well-being

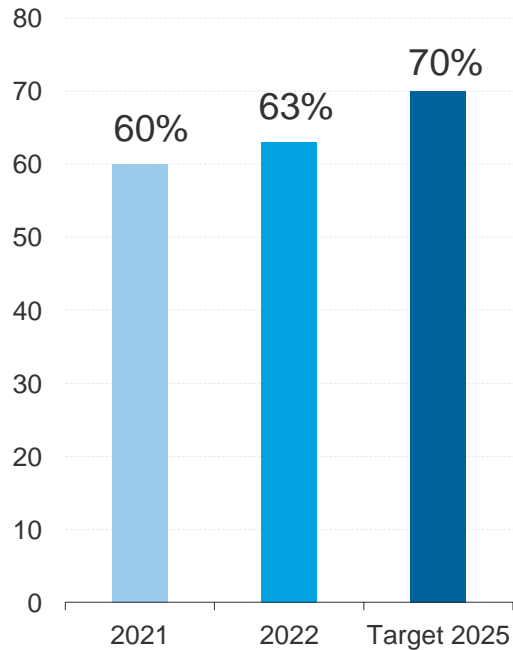


30%

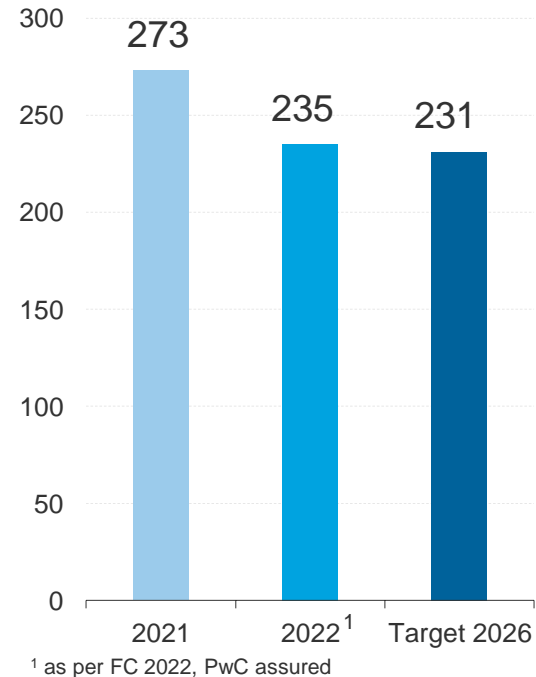
accident rate reduction

We are making exceptional progress to reach our sustainability targets...

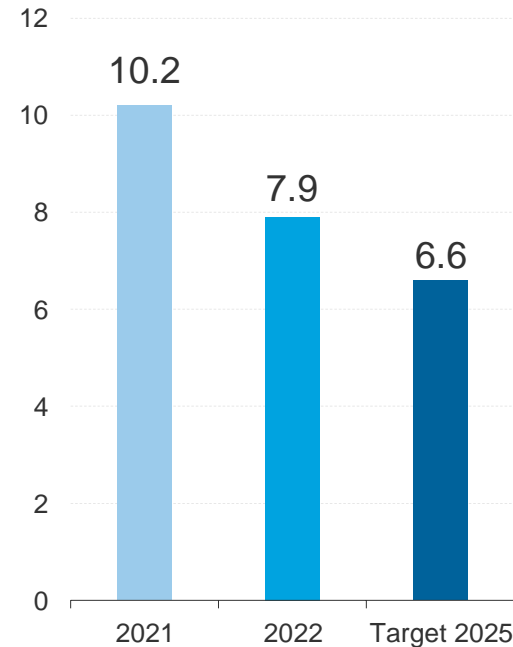
Sales of products with social or environmental benefits
% of total sales



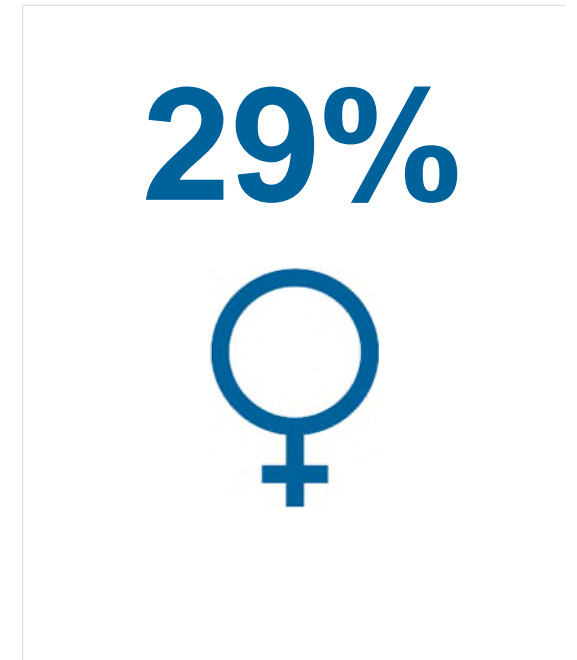
CO₂e emissions
Scope 1 and 2, 1'000 t



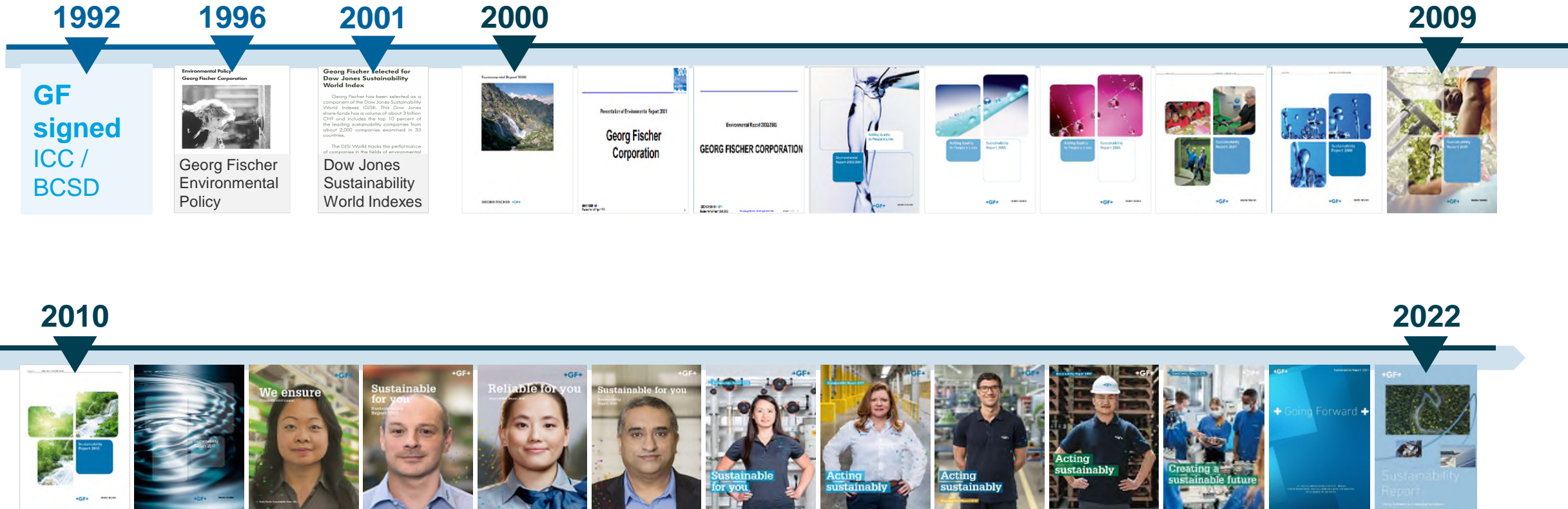
Accidents per million working hours



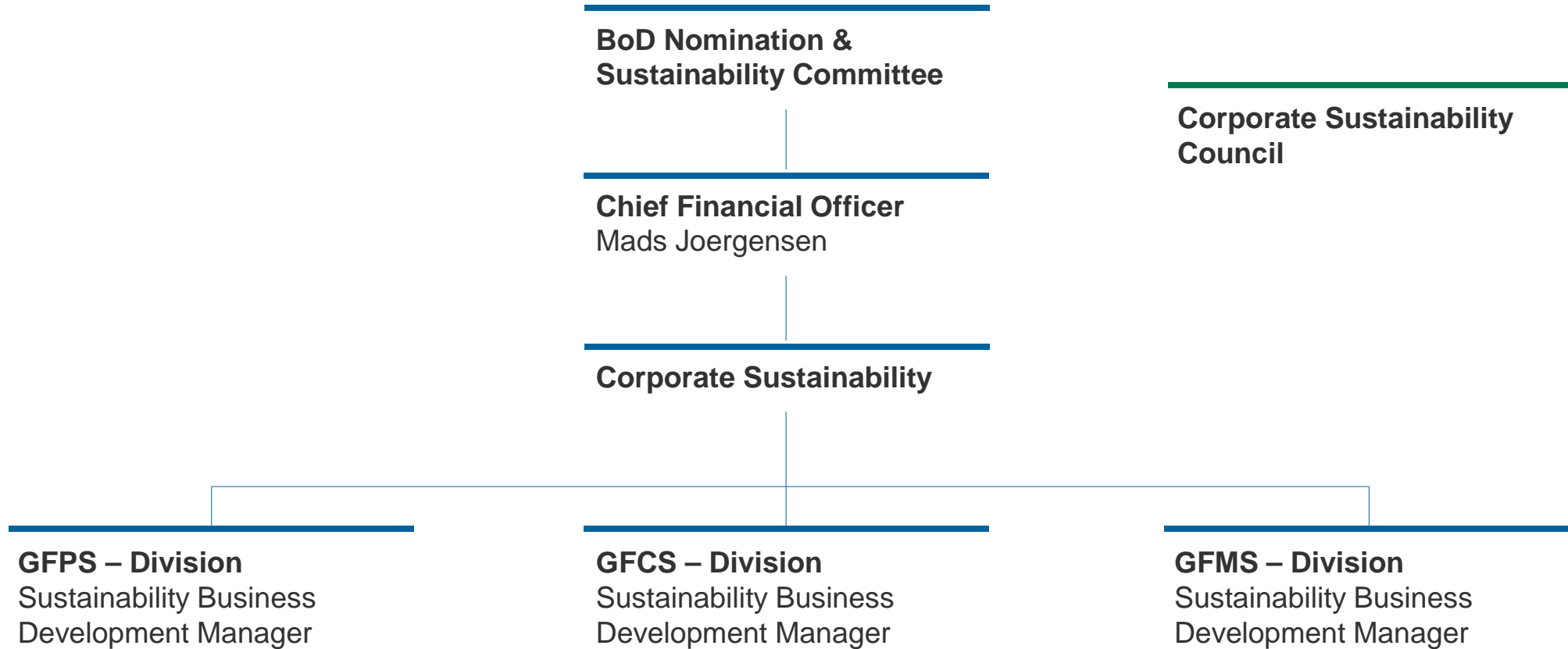
% of newly appointed women managers
2025 target: 25%



... GF committed to transparent sustainability reporting more than 30 years ago...



... governed within the highest management levels ...



...and our ESG efforts are clearly recognized by leading external rating agencies

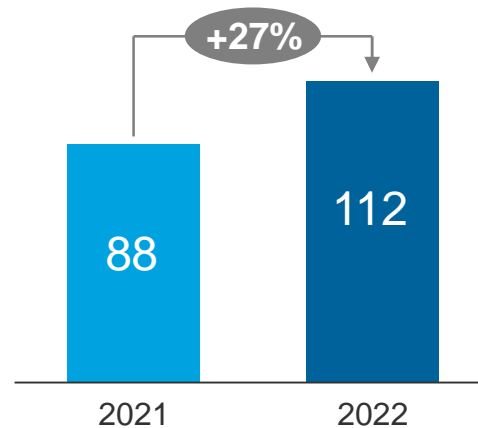


Rating Agency	Rating	Scale	External recognition									
 MSCI	AA Updated: 22.04.2022		The Financial Times has named GF as one of Europe's climate leaders for the second year in a row (2021 & 2022)									
	59 out of 413 (15 th percentile) Updated: 29.03.2022	As of March 2022, Georg Fischer received an overall ESG Ranking of 59 out of 413 companies of the global Machinery Industries and is considered by Sustainalytics to be at medium risk of experiencing material ESG financial impacts										
	C+ Updated: 01.05.2022		GF is rated as number 9*) most sustainably managed companies 2020 by WSJ *) out of 5'500 companies									
	A- on Climate A- on Water Updated: 13.12.2022	<table border="0"> <tr> <td>C</td> <td>B</td> <td>B-</td> </tr> <tr> <td>B-</td> <td>B</td> <td>B</td> </tr> <tr> <td>Powered machinery</td> <td>Europe</td> <td>Global average</td> </tr> </table>	C	B	B-	B-	B	B	Powered machinery	Europe	Global average	GF is member of SXI Switzerland Sustainability 25 [®] since 2014
C	B	B-										
B-	B	B										
Powered machinery	Europe	Global average										

We are providing sustainable products and solutions for our customers ...



GF EV sales (in CHF million)



GF Machining Solutions

FORM P series

Energy Efficiency Certificate

Operating mode (24h cycle time)	FORM 300 Sp	FORM P 350	Energy saving %	Thanks to GF
Standby (4h)	0.7 kW	0.3 kW	-57%	1
Ready (4h)	0.7 kW	1.8 kW*	-	2
Machining (16h)	4.7 kW	2.34 kW	-50%	3,4,5
Daily Energy Consumption	80.8 kWh	45.8 kWh	-43%	

All measurements were made in accordance with measurement standards as defined in ISO 14955
*Taking into account thermal stability

1 // Econowatt
Smart module enabling energy-saving standby mode and programmable fast reactivation ('wake up') option. No energy is wasted during non-productive time and each morning the equipment is prepared and ready to carry out the requested tasks.

2 // Thermal stability
The use of pumps is needed for the regulation of the electrical temperature and the prevention of the deformation of the machine and electrode. Our new pumps enable producing parts with significant higher accuracy from the very start, without waiting for the machine to warm up.

3 // IPG - Higher electrical efficiency
The latest generation of GF Machining Solutions' Intelligent Power Generators (IPG) allows a digital speed control of each spark, therefore improving the energy efficiency.

Equivalent to, over 1 year greenhouse gas and CO₂ emissions from:

- 787,492 smartphones charged
- 26,184 kilometers driven by an average passenger car
- 107 tree seedlings grown for 10 years

Source: www.epa.gov

Energy efficiency certificate

2025
30% // 54% reduction of daily energy consumption
2020 // FORM P series: Daily energy consumption reduced by 43%
2015 // FORM 300 Sp

... and see many global opportunities to fuel our future growth



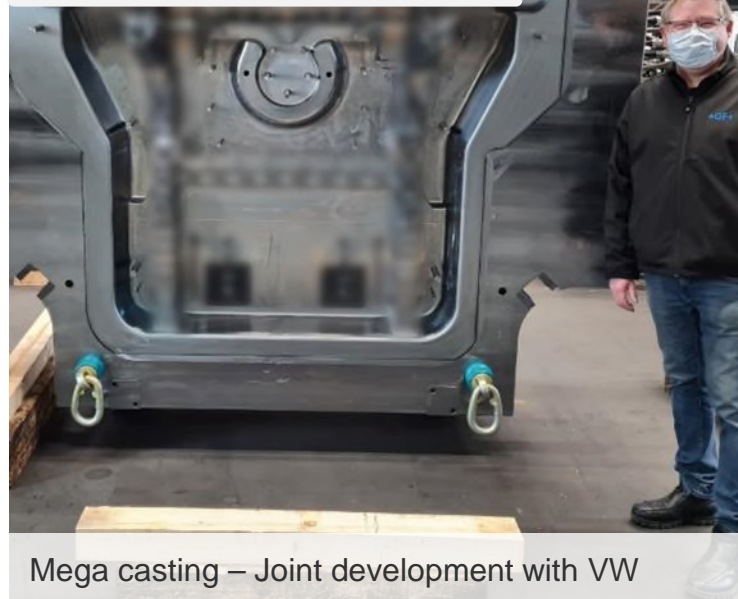
Sustainable energy storage



D.L.E (Direct Lithium Extraction)



Sustainable mobility



Mega casting – Joint development with VW



Skilled labor shortage



Flexible automation concepts

Our Values will focus all employees to unleash the full potential of GF....



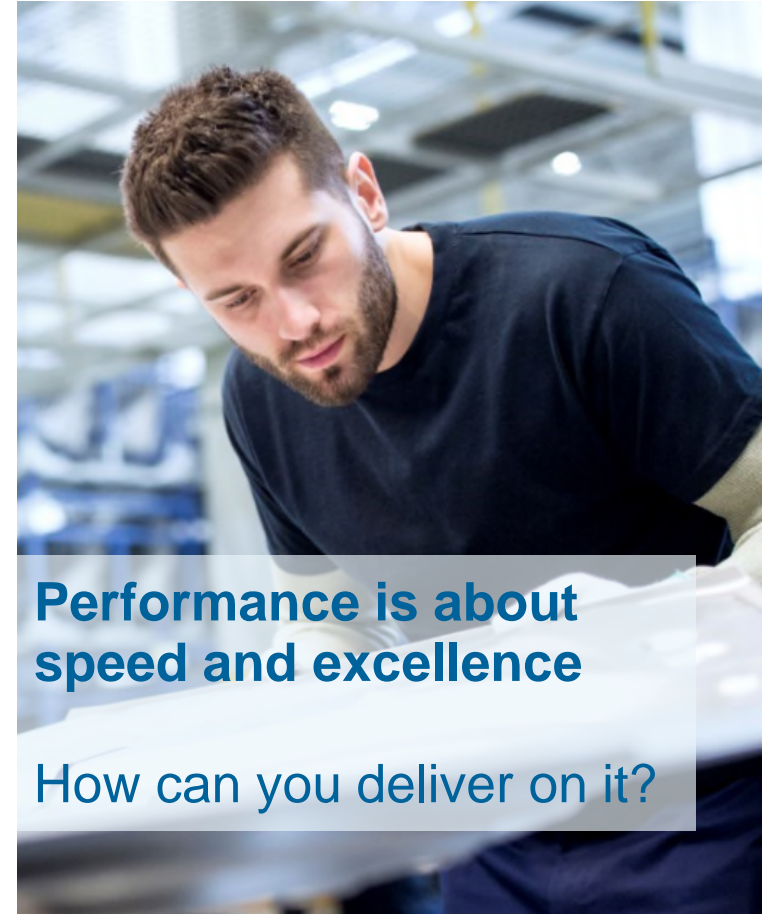
**Caring is about
being part of a team**

How can you make it win?



**Learning is about
having an open mind**

What will you change?

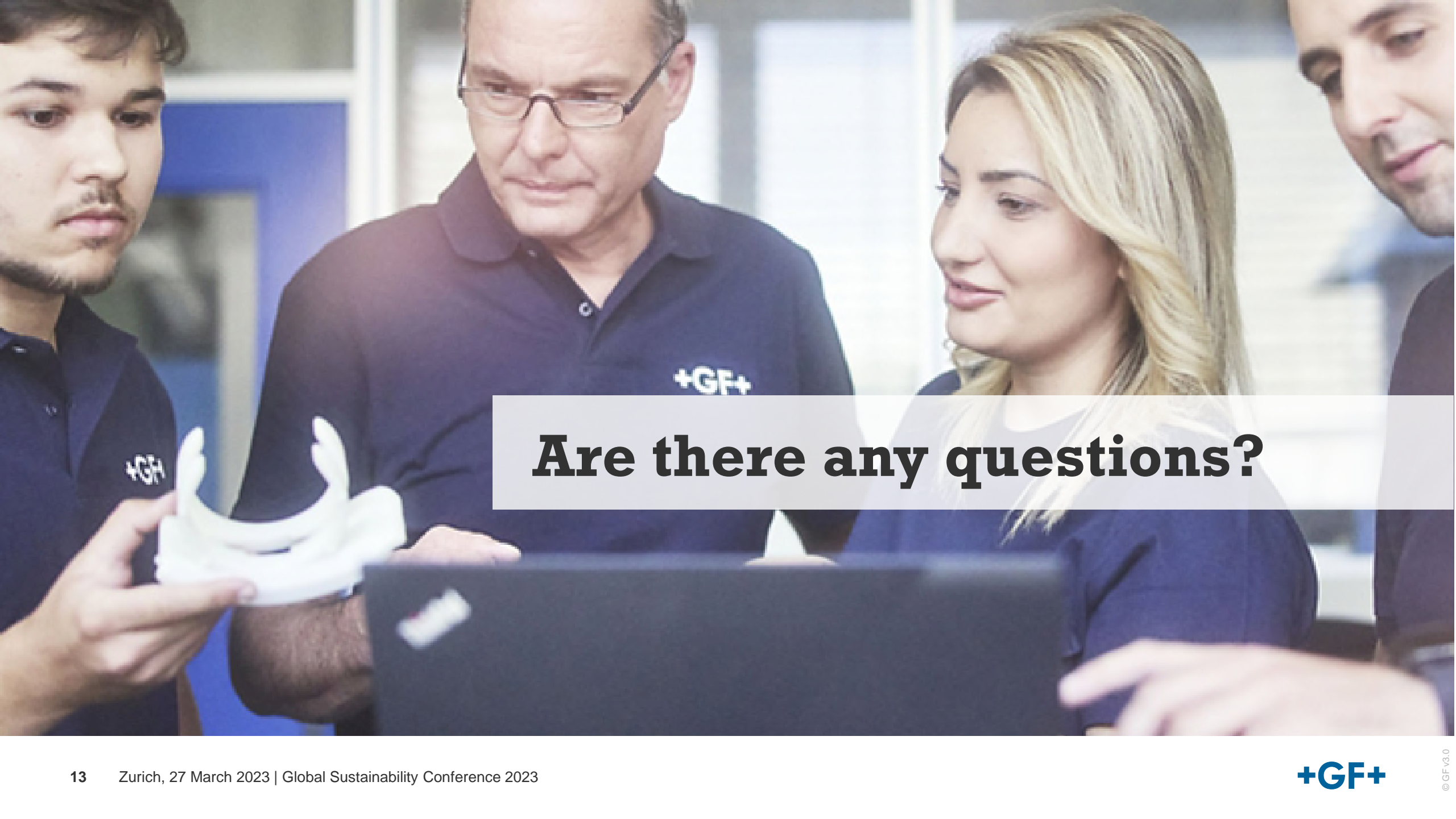


**Performance is about
speed and excellence**

How can you deliver on it?



**+ Going
Forward,
creating an
impact**



Are there any questions?



Thank you