

GF Piping Systems

+GF+

NeoFlow Pressure
Regulating Valve

Challenge met + problem
solved = satisfied customer

Hotel Aqua Live, Cancún, MX

A reliable cost effective solution using
the NeoFlow Pressure Regulating Valve

Hotel Aqua Live

Cancún, MX

HOTEL AQUA LIVE, located in Cancún, Quintana Roo, has successfully implemented a state-of-the-art solution for controlling and regulating the pressure in its hotel service lines. By utilizing reliable, lightweight, and corrosion-free valves, the hotel has achieved remarkable results.

Solution

Hotel Aqua Live installed a NeoFlow Pressure Regulating Valve from GF Piping Systems to accurately manage the pressure in its service lines. The NeoFlow valve reduced the weight by 90% compared to a metallic valve, allowing us to eliminate the special support required for metallic valves. The calibration time for the NeoFlow valve is very short and its three primary components are adjusted with simple tools.

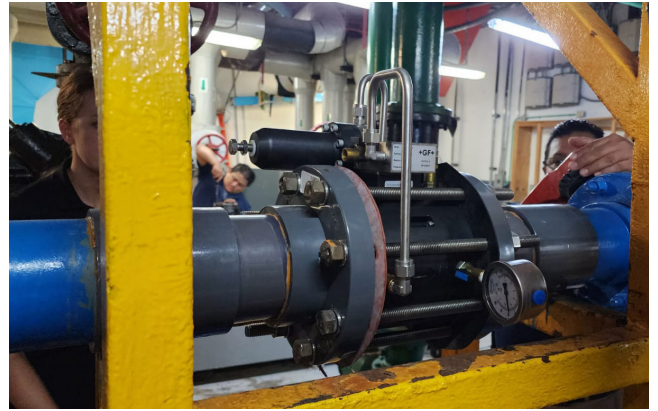
Results

The NeoFlow valve operates flawlessly, ensuring precise water distribution thanks to its axial flow design, which guarantees a consistent and stable flow. The lightweight nature of the NeoFlow valve eliminated the need for additional support typically required by metallic valves. As a result of the exceptional performance of the NeoFlow valve, the customer decided to order the distribution headers with NeoFlow valves on them that will be provided by GF Piping Systems in PPH material. Furthermore, the hydraulic arrangement includes the incorporation of three additional 4" NeoFlow valves.

Customer comments

"The NeoFlow valves operate at 100%, controlling perfectly."

Rodrigo Martínez
Maintenance Manager
Hotel Live Aqua



NeoFlow pressure regulating valves are compact, easy to install, and maintain. The valve can be fully serviced in less than one hour due to its mechanical simplicity and low weight.



Fully customizable and easy to integrate into the existing systems and configure to reduce pressure as required. Thanks to compact body design the valve is up to nine times lighter and can decrease installation time by up to 40% compared to standard metal PRVs.

For more information about NeoFlow,
please either scan the QR code or
[click here.](#)



Georg Fischer LLC
GF Piping Systems
9271 Jeronimo Road
Irvine, CA 92618 USA

Telephone +1 714 731 8800
us.ps@georgfischer.com
www.gfps.com

The information and technical data (altogether "Data") herein are not binding, unless explicitly confirmed in writing. The Data neither constitutes any expressed, implied or warranted characteristics, nor guaranteed properties or a guaranteed durability. All Data is subject to modification. The General Terms and Conditions of Sale of Georg Fischer Piping Systems apply.

